

elcom

LA LIBERTÉ DE CONCEVOIR

FLAT BELT CONVEYORS

FRENCH INDUSTRIAL LEADER

elcom has brought innovating solutions to the industry.

Our approach offers a complete freedom of design thanks to a unique range of flat belt conveyors and modular transfer system.



EXCLUSIVE **item** PARTNER

Our partnership with the German firm **item** since 1986 has opened a large expertise field and a worldwide recognized network.

elcom's flat belt conveyor design, constructed from item's range of profiles, enables a great modularity.

GEOGRAPHICAL PRESENCE

Europe

France

Benelux

Italy

Germany

Spain

Scandinavia

Denmark

Finland

Norway

Sweden

North America

USA

Canada

South America

Australia

Asia

India

China

Malaysia

Singapore



COMPLETE RANGE AND NEW PRODUCTS

Our creations result from a wide range of products which is regularly enlarged by novelties. They offer unlimited possibilities in terms of industrial modularity.



SERVICES

- x Strong production capacity and very high reactivity
- x Important stock, fast delivery
- x Preparation for kit delivery
- x Assembly of complete sets

- x Quotations based on customers' plans and sketches
- x Technical advices
- x CAD files library
- x Fast prototype abilities



All services on our website

www.elcom.fr

CONTENTS

1



FLAT BELT CONVEYORS 20

PAGES

08

2



FLAT BELT CONVEYORS 40 CENTRAL DRIVE

14

3



FLAT BELT CONVEYORS 40 END DRIVE

20

4



FLAT BELT CONVEYORS 40 DOUBLE BELT

28

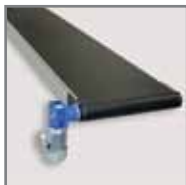
5



INCLINE FLAT BELT CONVEYORS 40

40

6



FLAT BELT CONVEYORS 90

44

7



ACCESSORIES Gear motors, belts, extremity Ø 21, plates, lower belt support, lateral guides, fastening plate, conveyor stands

54

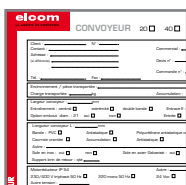
8



CONVEYING UNIT WITH INFLATABLE BELT

62

9



FLAT BELT CONVEYOR DETERMINATION

64

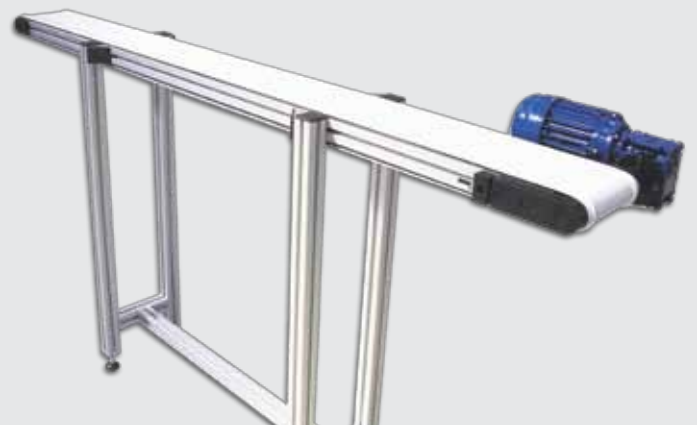


A complete range :

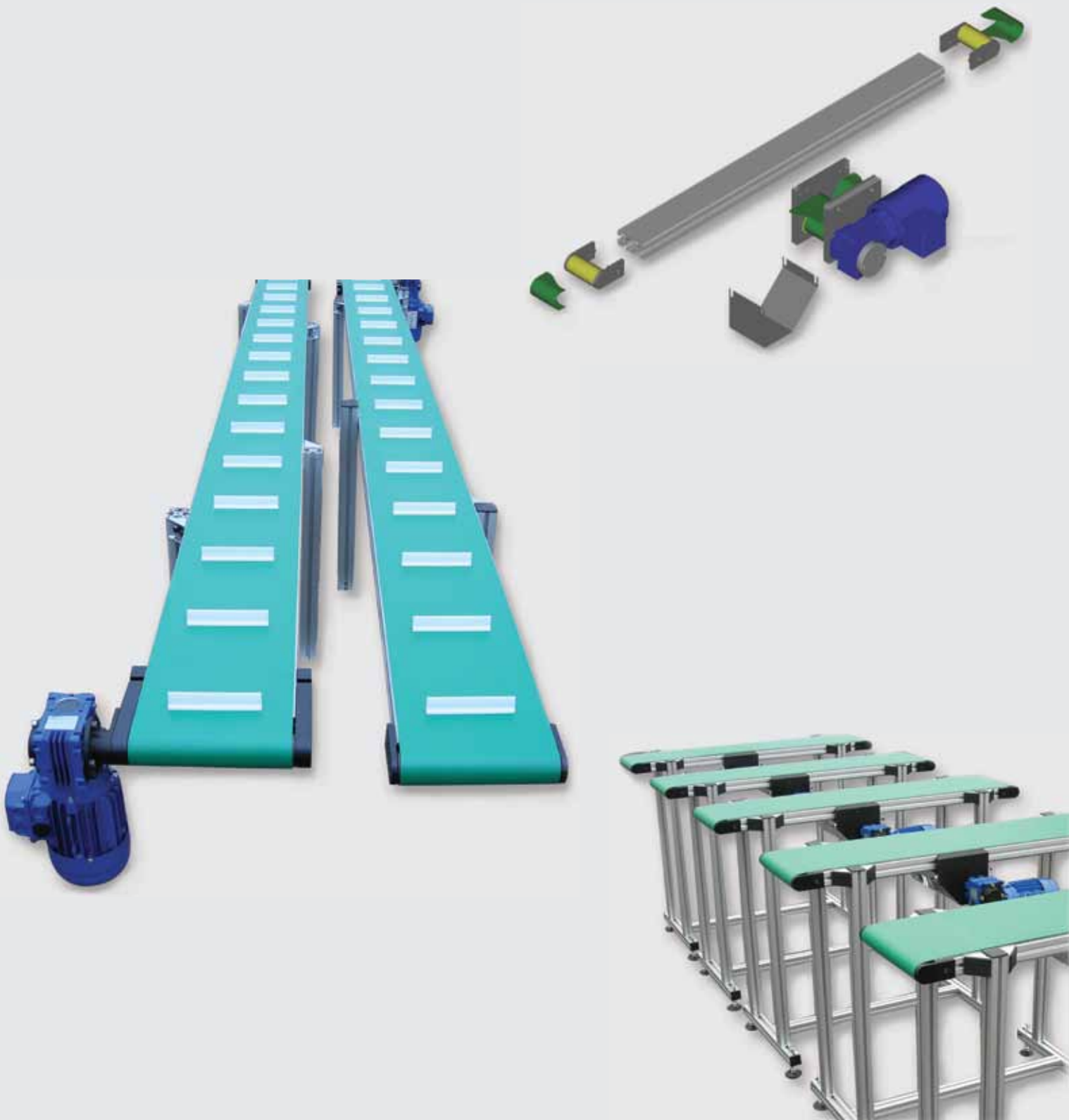
- central drive
- end drive
- below drive
- single belt
- double belt
- flat belt
- timing belt
- cleated belts
- timing belt with support of parts

Width 20 to 1000 mm.

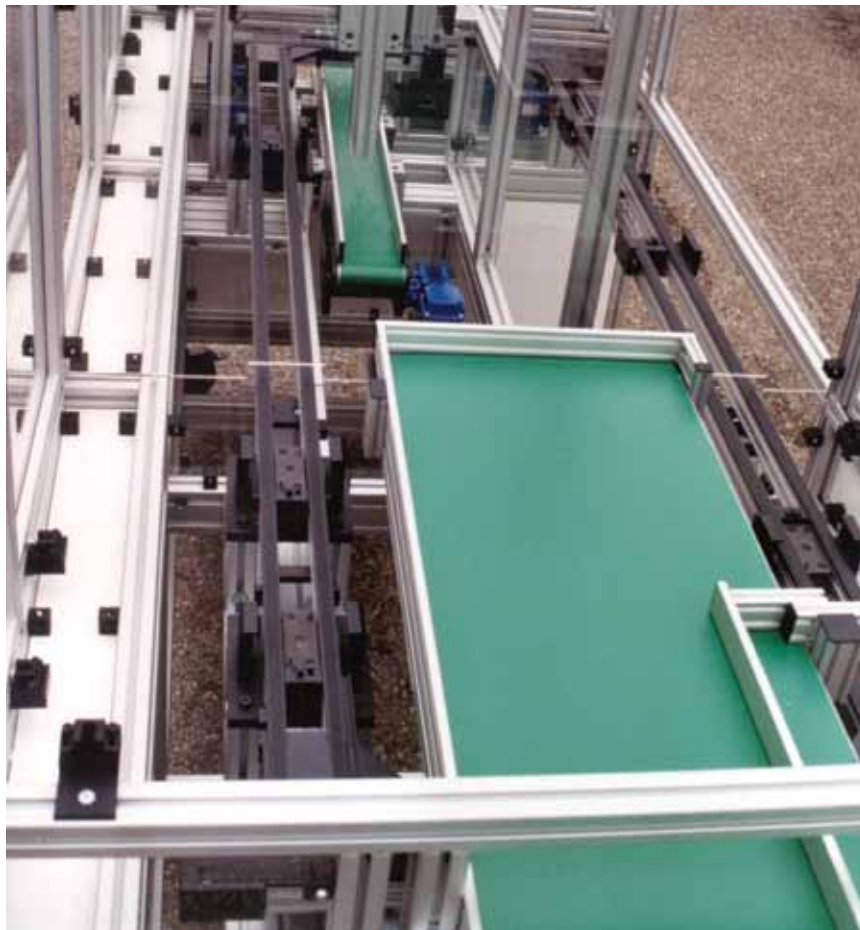
Possible adaptation on request.



elcom's flat belt conveyor design, constructed from item's range of profiles, enables a great modularity.



The perfect complementarity between flat belt conveyors, profiles and transfer system will facilitate the realization of your ideas.



elcom it's also :
the range of profiles and
accessories **item** ,
transfer with workpiece
carriers.





elcom

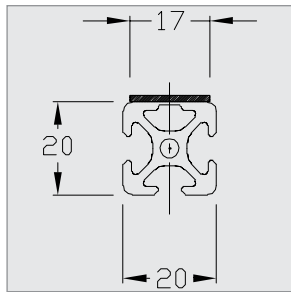
LA LIBERTÉ DE CONCEVOIR

FLAT BELT CONVEYOR 20





Width 20 Central drive



Technical data

Flat belt conveyor for limited space required, built with profile 5 basis 20 mm for very small and light components.

- x Adjustable position of the drive along the profile.
- x Pulleys with ball bearings.
- x Optional stainless steel plate.
- x Easy assembly on profiles line 8.

Dimensions (mm)

- x Width A : 20
- x Length L : 200 to 3 000
- x Length of profile : $LP = L - 31$
- x Length of belt : $Lc = [2xL + 163] x 0,992$
- x Width of belt : 17

Gear motor

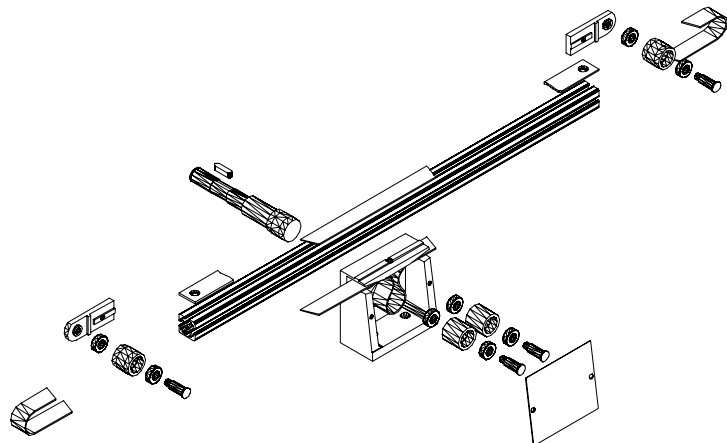
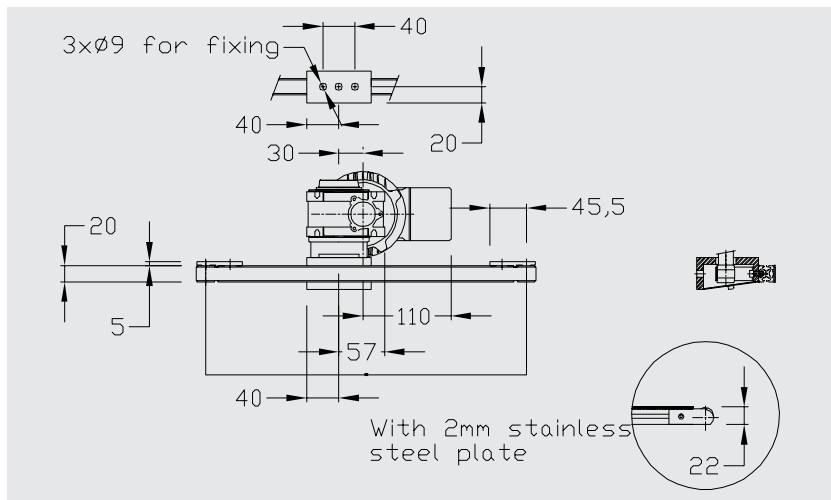
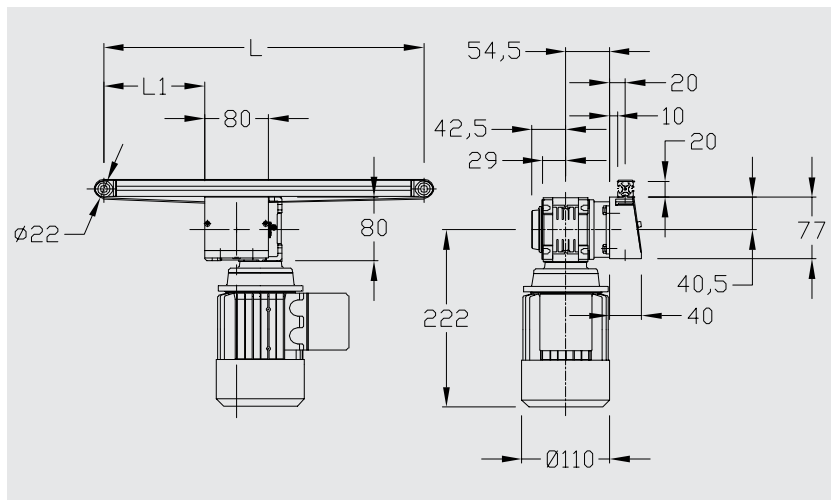
- x 230 single-phase and 230/400 V three-phase speed (m/min) +/- 10% : 1 - 2 - 3 - 6 - 9 - 12 - 19
- x 24 VDC speed (m/min) +/- 10% : 3 - 4 - 8 - 13 - 19

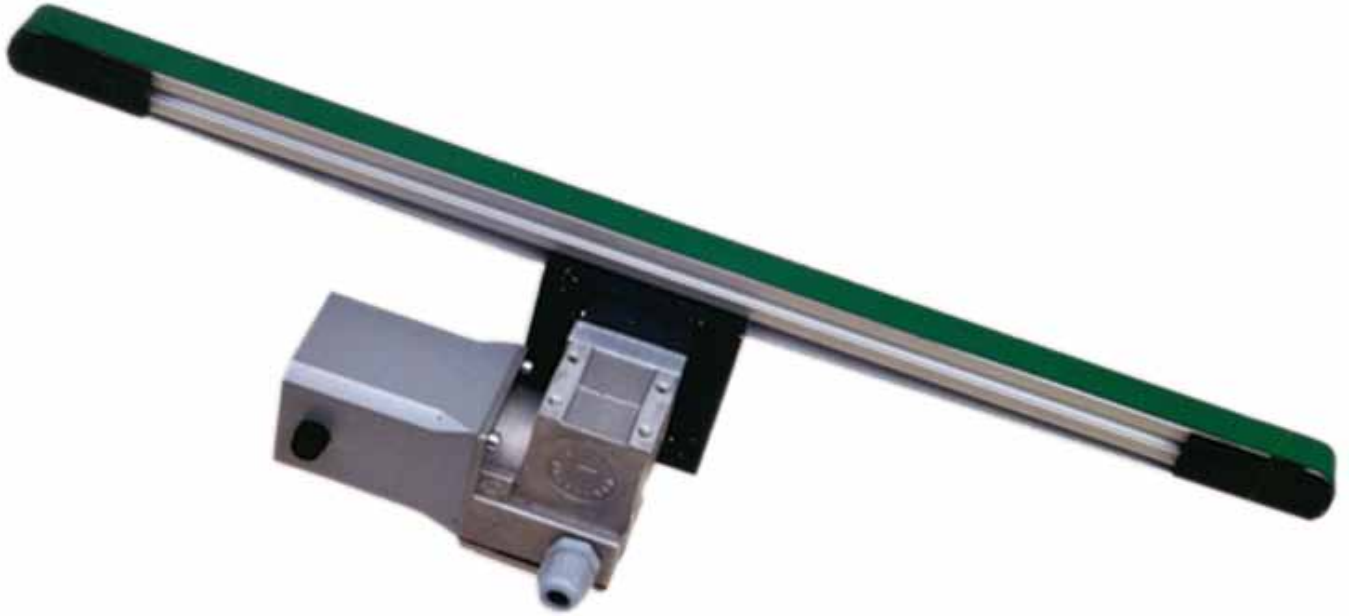
Polyurethane belt, maxi thickness : 1,3 mm

Belt rigidity with tension 1% : 5 N/mm maxi

Data and positions

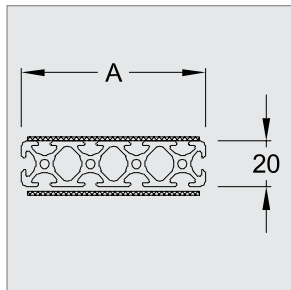
Motors : see page 56
Belts : see page 57





Widths 40, 80, 160

Central drive



Technical data

Flat belt conveyor for limited space required, built with profile 5 basis 20 mm for very small and light components.

- x Adjustable position of the drive along the profile.
- x Pulleys with ball bearings.
- x Optional stainless steel plate.

Dimensions (mm)

- x Width A : 40 - 80 - 160
- x Length L : 300 to 3 000
- x Length of profile : LP = L-31
- x Length of belt : $L_c = (2 \times L + 285) \times 0,995$
- x Width of belt : A - 5

Gear motor

- x 230 V single-phase and 220/400 V three-phase speed (m/min) +/- 10% : 2 - 3 - 6 - 9 - 12
- x 24 VDC on request

Belts

Polyurethane belts, maxi thickness : 1,3 mm

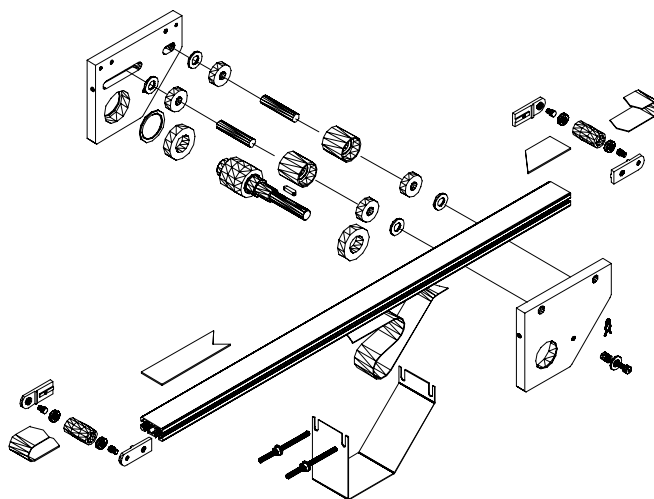
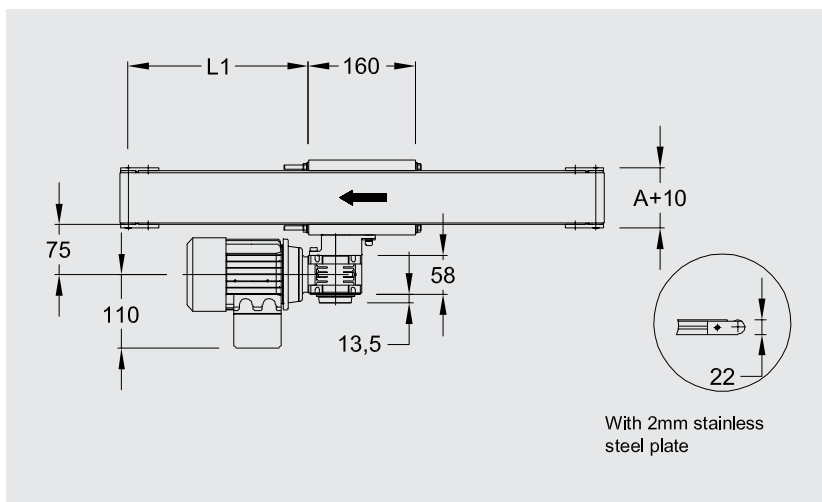
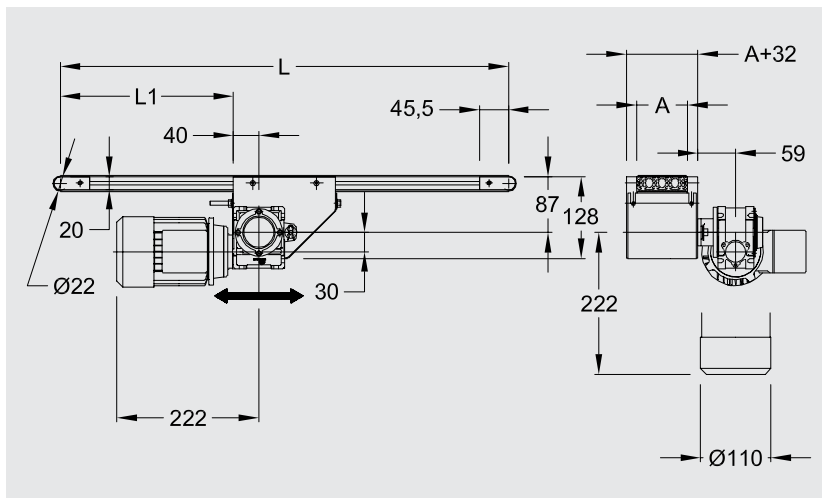
Installation tension : 0,5 % maxi

Belt rigidity with tension 1% : 5 N/mm maxi

Data and positions

Motors : see page 56

Belts : see page 57

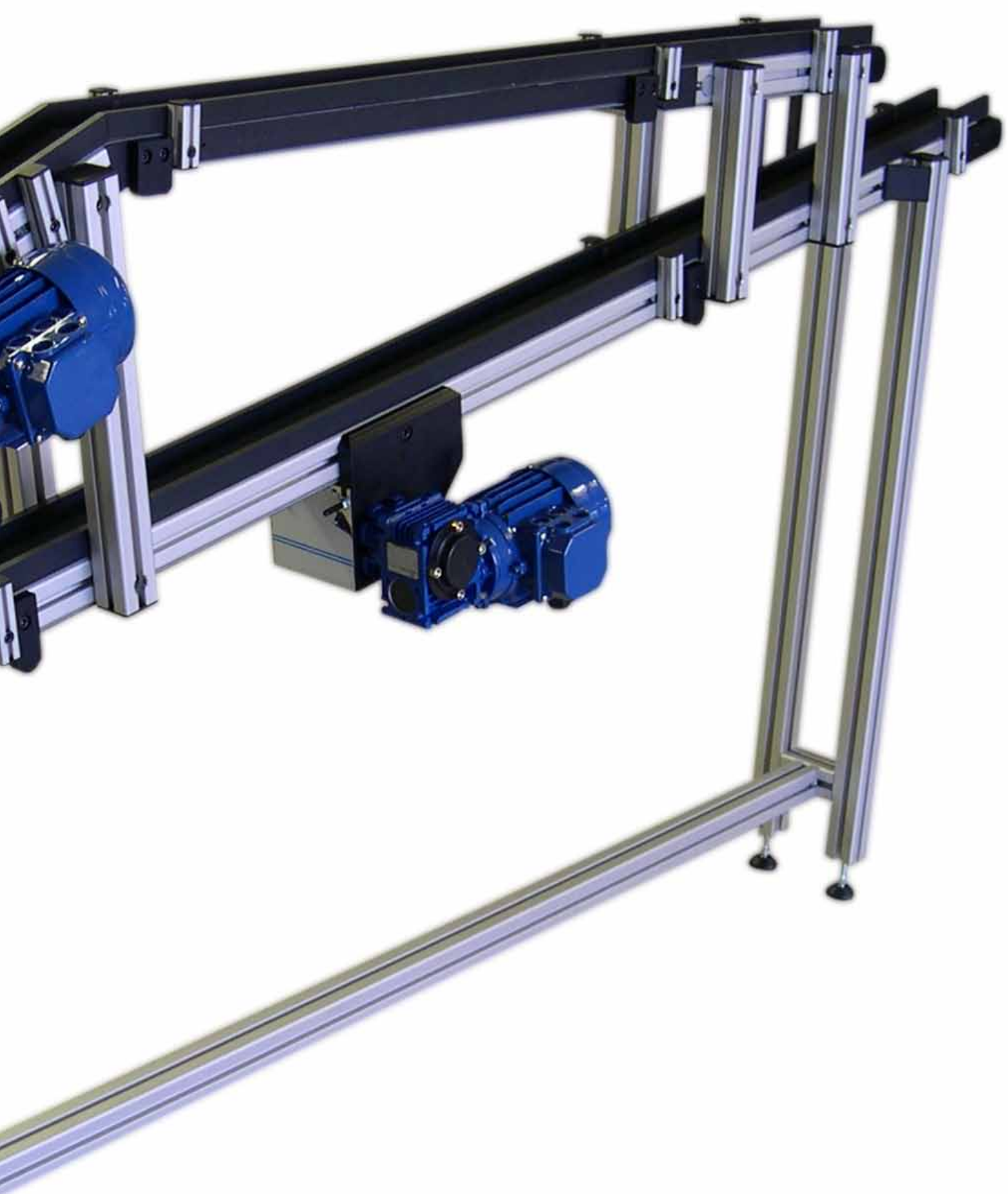


References	C 020 20 000
	C 020 30 000
	C 020 50 000



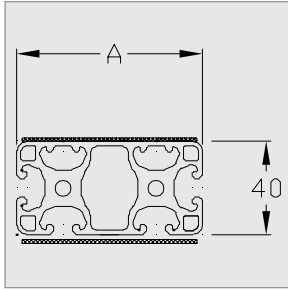
FLAT BELT CONVEYOR 40





Central drive

Flat belt



Technical data

Compact conveyor on profiles 8 basis 40 mm, for all kinds of components.

- x Adjustable position of the drive along the profile.
- x Steel pulleys with ball bearings.
- x Stainless steel plate from 200 to 400 mm, otherwise on option.

Dimensions (mm)

- x Width A : 40 - 80 - 120 - 160 - 200 - 250 - 300 - 400
- x Length L : 400 to 6 000
- x Length of profile : LP = L-50
- x Length of belt : $L_c = (2xL+375) \times 0,992$
- x Width of belt : A - 5

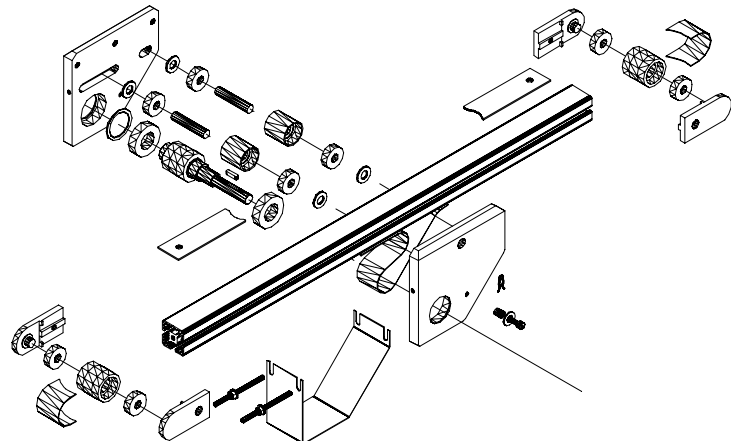
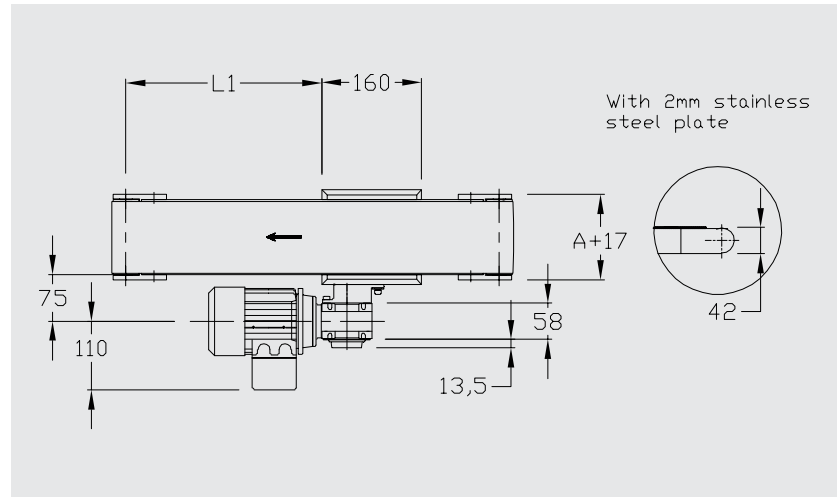
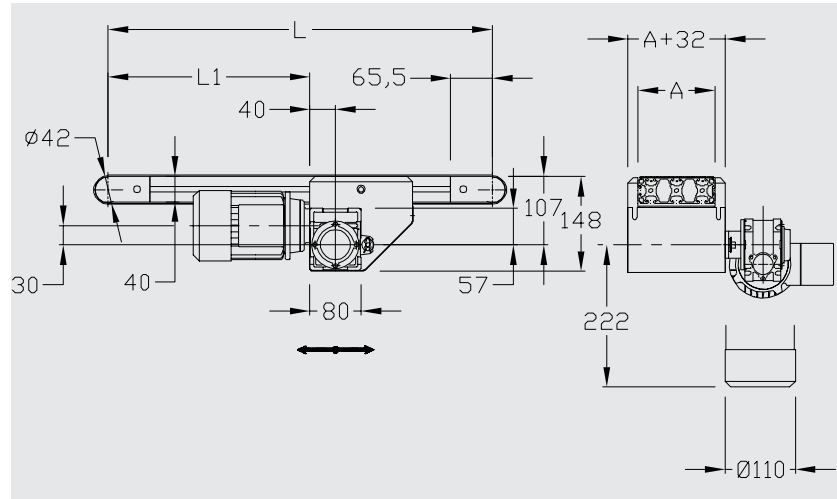
Gear motor

- x 230 V single-phase and 230/400 V three-phase speed [m/min] +/- 10% : 2 - 3 - 6 - 9 - 12 - 18 - 24
- x 24 VDC on request

Recommended installation tension :
0,5 % maxi

Data and positions

Motors : see page 56
Belts : see page 57



Reference C 040 10 000

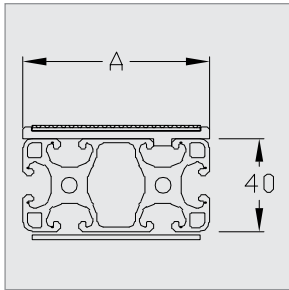
eg. width A = 120

thus ref = C 120 10 000



Central drive

Timing belt



Technical data

Compact conveyor on profiles 8 basis 40 mm, for all kinds of components.

Positive driving belt for heavy loads.

- x Adjustable position of the drive along the profile.
- x Notched pulleys.
- x Guiding belt PA material.
- x Timing belt, 5 mm step.

Dimensions (mm)

- x Width A : 40 - 80
- x Length L : 400 to 6 000
- x Length of profile : $LP = L - 51$
- x Length of belt : $Lc = (2xL + 368) \times 0,999$
- x Width of belt : 32 and 72 mm

Gear motor

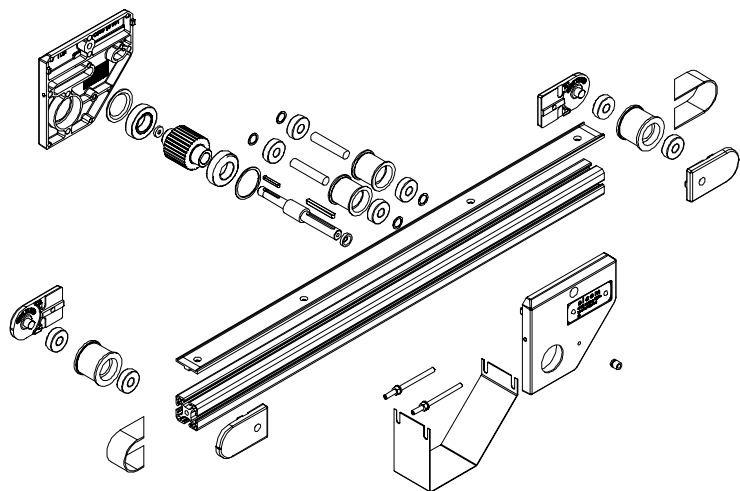
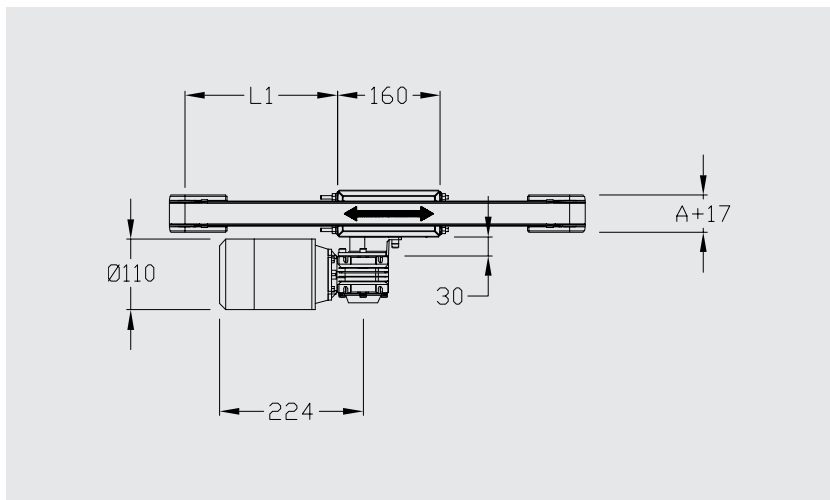
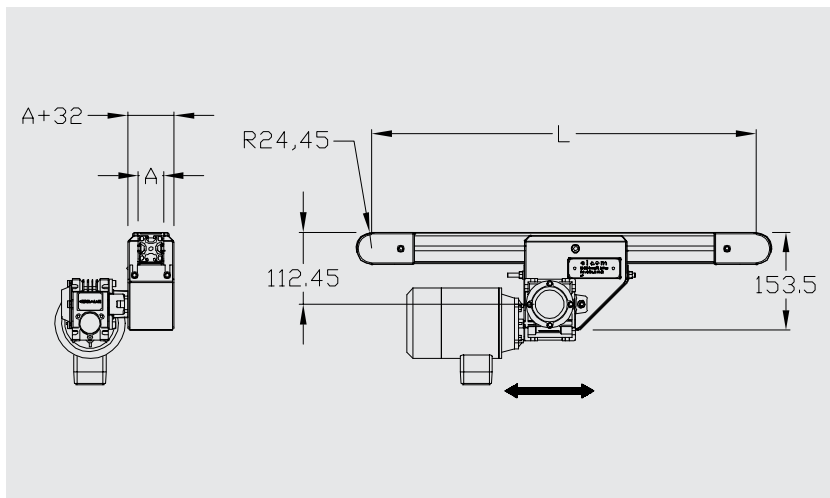
- x 230 V single-phase and 230/400 V three-phase speed (m/min) +/- 10% : 2 - 3 - 6 - 9 - 12 - 18 - 24
- x 24 VDC on request

Installation tension : 0,1 %

Data and positions

Motors : see page 56

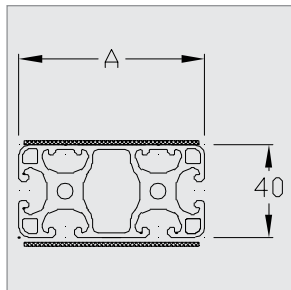
Belts : see page 57





End drive

Flat belt



Technical data

Compact conveyor on profiles 8 basis 40 mm, for all kinds of components. Particularly well adapted to the use of cleated belts.

- x Drive on extremity drive pulley.
- x Steel pulleys with ball bearings.
- x Stainless steel plate from 200 to 400, otherwise on option.

Dimensions (mm)

- x Width A : 40 - 80 - 120 - 160 - 200 - 250 - 300 - 400
- x Length L : 400 to 6 000
- x Length of profile : $LP = L - 52,5$
- x Length of belt : $Lc = (2 \times L) + 132$
- x Width of belt : A-5
- x Overall length :
 $Lh = L + 42 + 2 \times \text{thickness of belt} + \text{tension}$

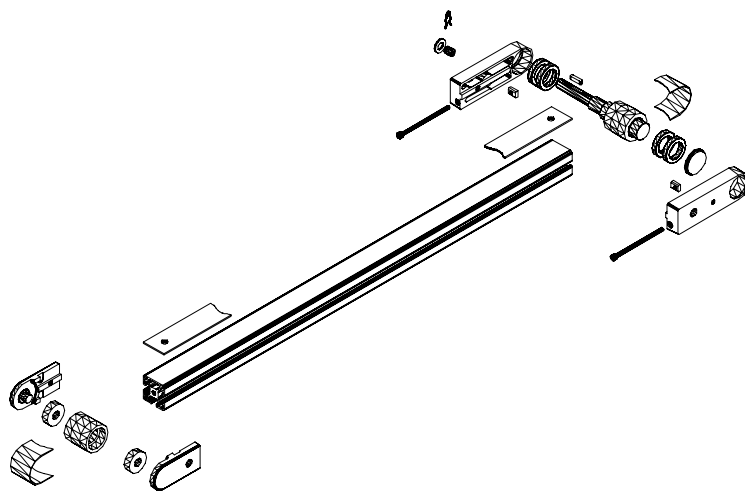
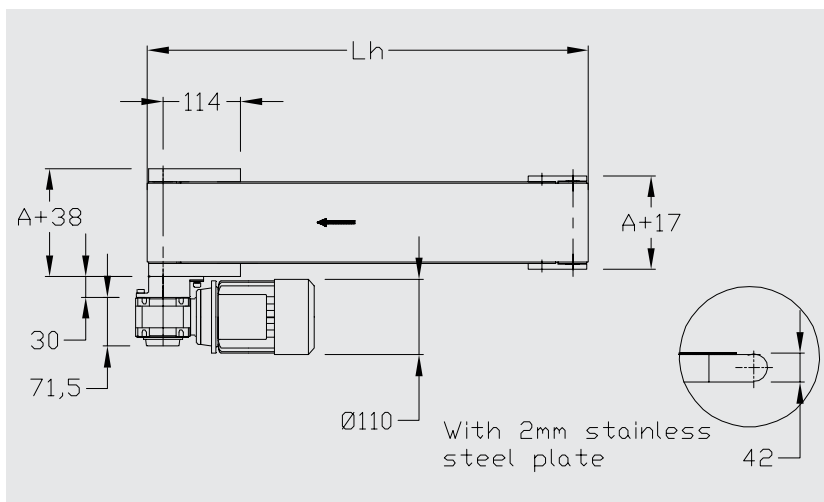
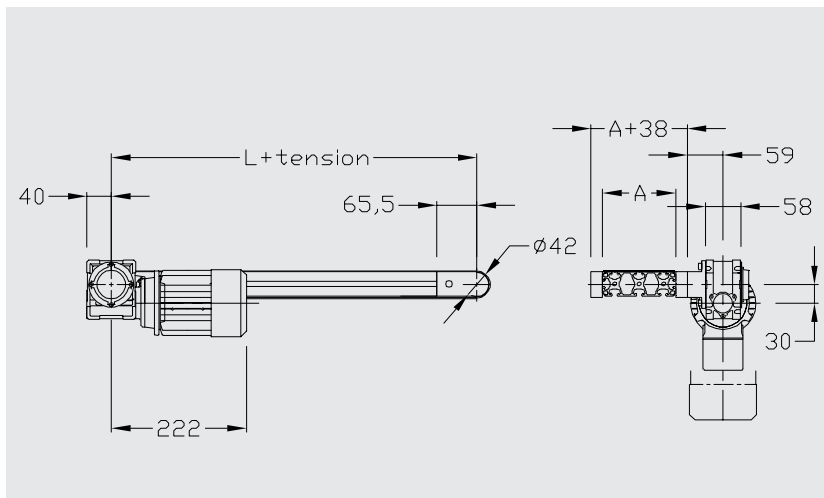
Gear motor

- x 230 V single-phase and 230/400 V three-phase speed (m/min) +/- 10% : 2 - 3 - 6 - 9 - 12 - 18 - 24
- x 24 VDC on request

Installation tension : 0,5 % maxi

Data and positions

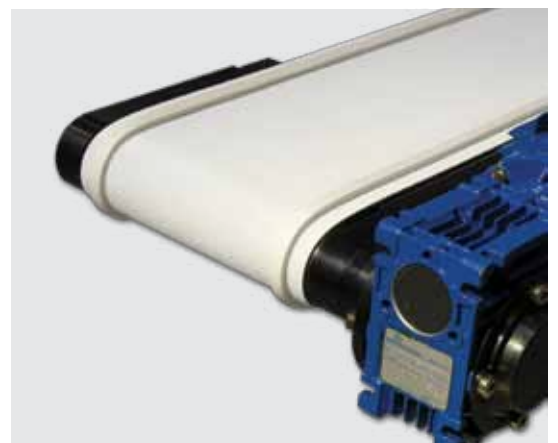
Motors : see page 56
 Belts : see page 57



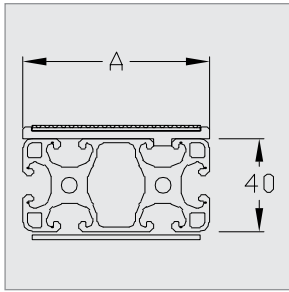
Reference C 040 50 000

eg. width A = 120

thus ref = C 120 50 000



End drive Timing belt



Technical data

Compact conveyor on profiles 8 basis 40 mm, for all kinds of components.
Positive driving belt for heavy loads.

- x Notched pulleys.
- x Guiding belt PA material.
- x Timing belt, 5 mm step.

Dimensions (mm)

- x Width A : 40 - 80
- x Length L : 400 to 6 000
- x Length of profile : $LP = L - 68,5$
- x Length of belt : $Lc = (2xL + 152) \times 0,999$
- x Width of belt : 32 and 72 mm

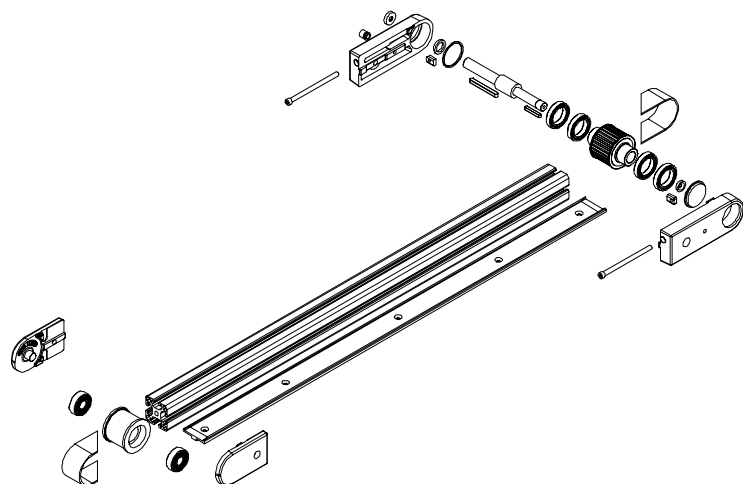
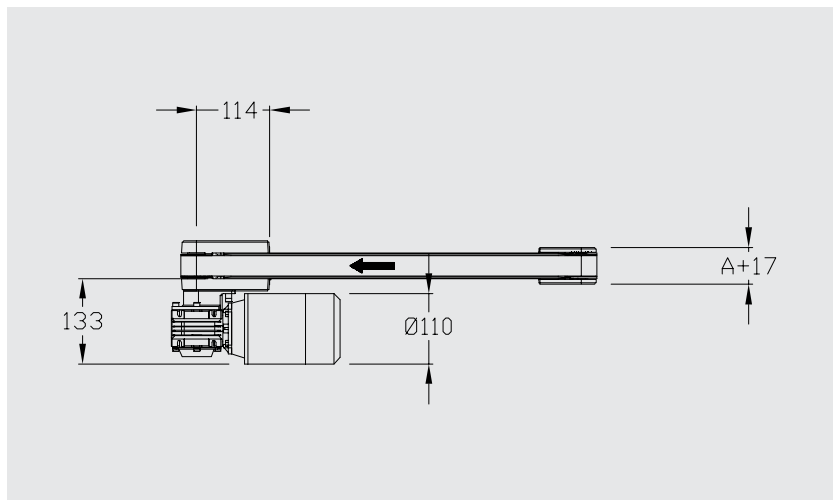
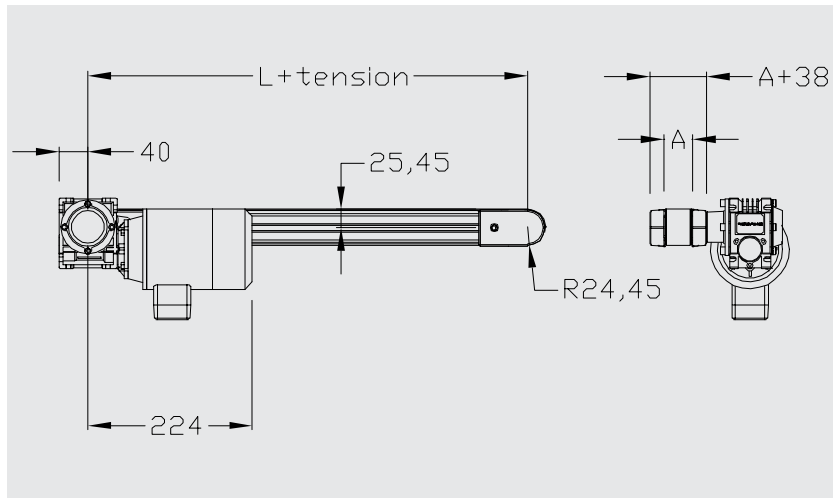
Gear motor

- x 230 V single-phase and 230/400 V three-phase speed (m/min) +/- 10% : 2 - 3 - 6 - 9 - 12 - 18 - 24
- x 24 VDC on request

Installation tension : 0,1 %

Data and positions

Motors : see page 56
Belts : see page 57



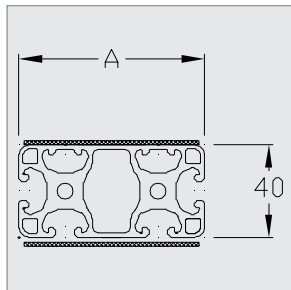
Reference C 040 51 000

eg. width A = 80

thus ref = C 080 51 000



End drive Motor below Flat belt



Technical data

Compact conveyor on profiles 8 basis 40 mm, for all kinds of components. Positioned below, the motor facilitates the integration.

- x Drive of the extremity pulley with timing belt 5 mm step width 32mm.
- x Steel pulleys with ball bearings.
- x Stainless steel plate from 200 to 400, otherwise on option.

Dimensions (mm)

- x Width A : 40 - 80 - 120 - 160 - 200 - 250 - 300 - 400
- x Length L : 400 to 6 000
- x Length of profile : LP = L-52,5
- x Length of belt : Lc = (2xL) + 132
- x Width of belt : A-5
- x Overall length :
Lh = L + 42 x 2 thickness of belt + tension

Gear motor

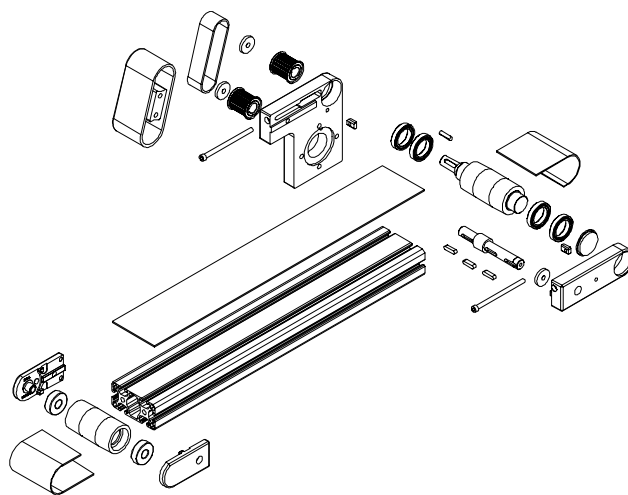
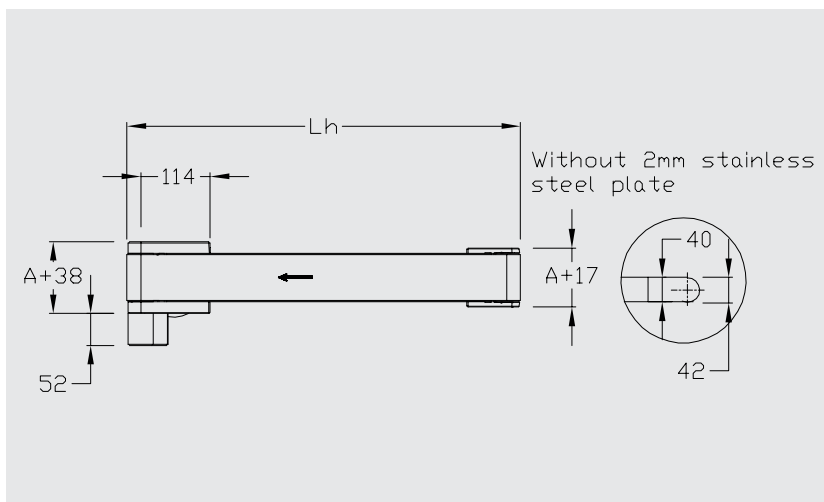
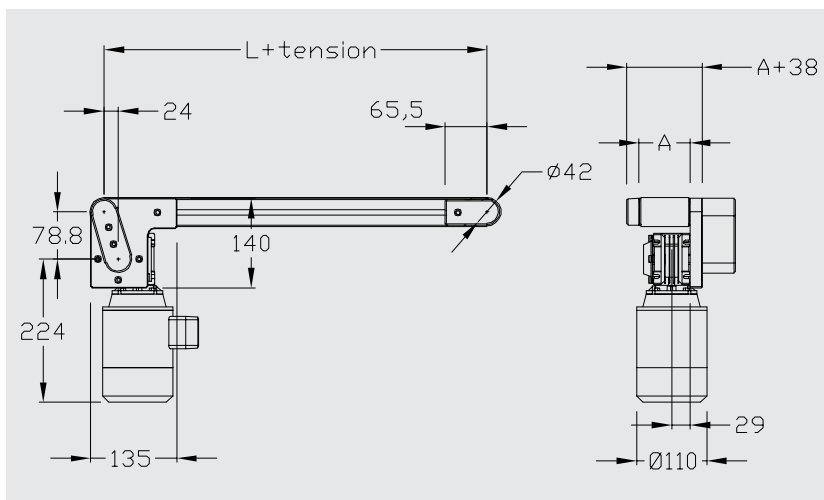
- x 230 V single-phase and 230/400 V three-phase speed [m/min] +/- 10% : 2 - 3 - 6 - 9 - 12 - 18 - 24
- x 24 VDC on request

Installation tension : 0,5 % maxi

Data and positions

Motors : see page 56

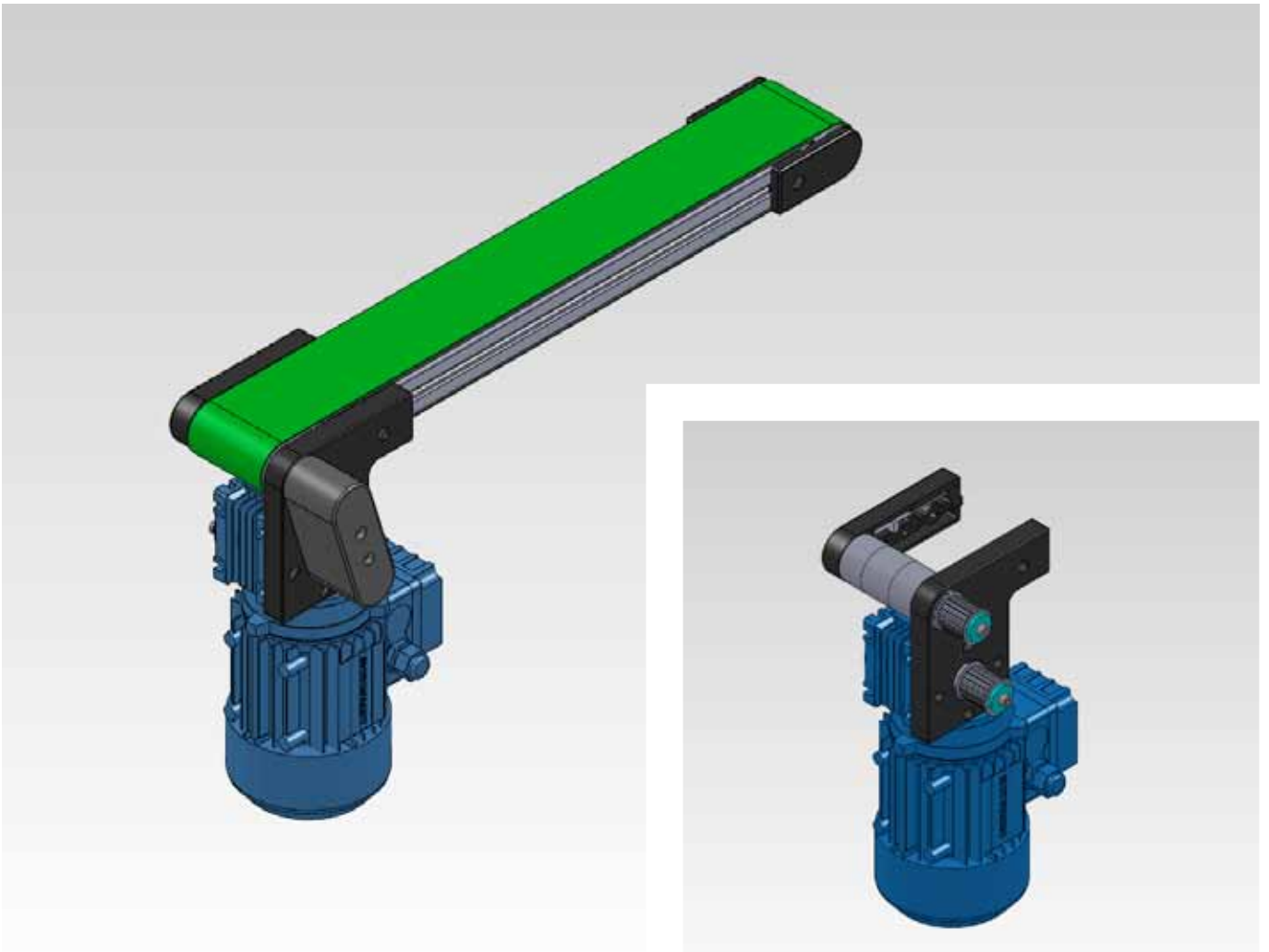
Belts : see page 57



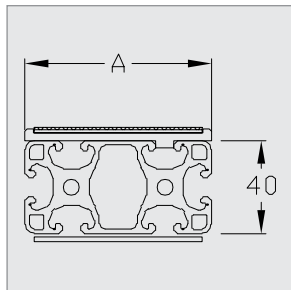
Reference : C040 53 00

eg. width A = 120

thus ref = C 120 53 000



End drive Motor below Timing belt



Technical data

Compact conveyor on profiles 8 basis 40 mm, for all kinds of components. Positive driving belt for heavy loads. Positioned below, the motor facilitates the integration.

- x Drive of the extremity pulley with timing belt 5 mm step width 32mm.
- x Notched pulleys.
- x Guiding belt PA material.
- x Timing belt, 5 mm step.

Dimensions (mm)

- x Width A : 40 - 80
- x Length L : 400 to 6 000
- x Length of profile : LP = L-68,5
- x Length of belt : Lc = (2xL+152) x 0,999
- x Width of belt : 32 and 72 mm

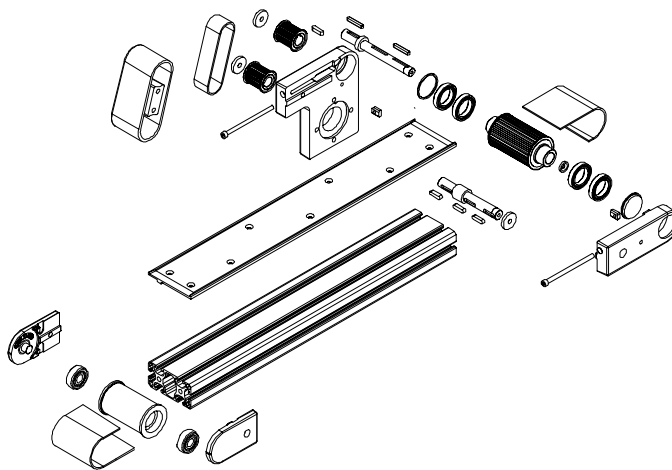
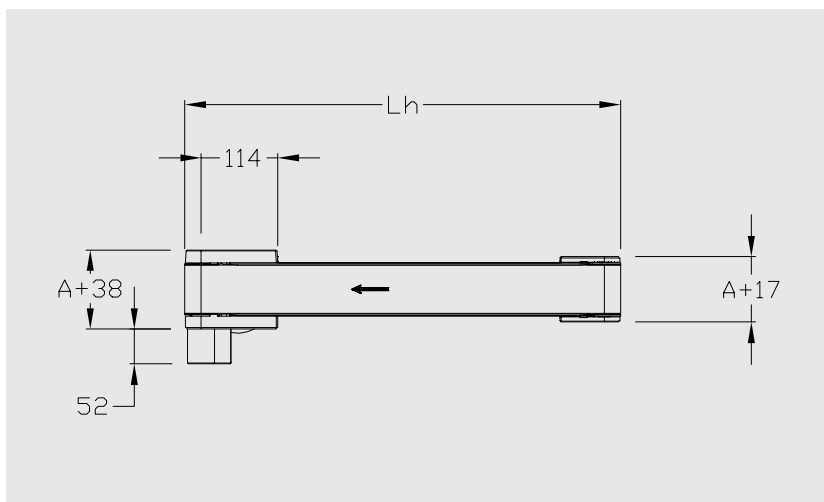
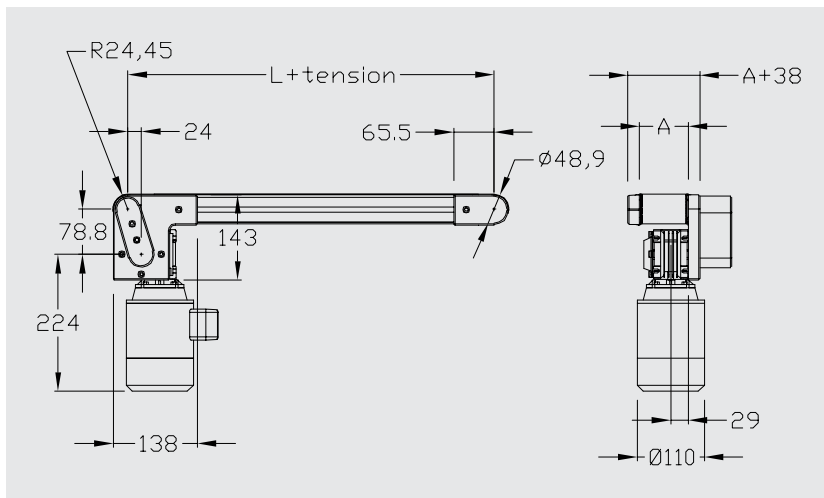
Gear motor

- x 230 V single-phase and 230/400 V three-phase speed (m/min) +/- 10% : 2 - 3 - 6 - 9 - 12 - 18 - 24
- x 24 VDC on request

Installation tension : 0,1 %

Data and positions

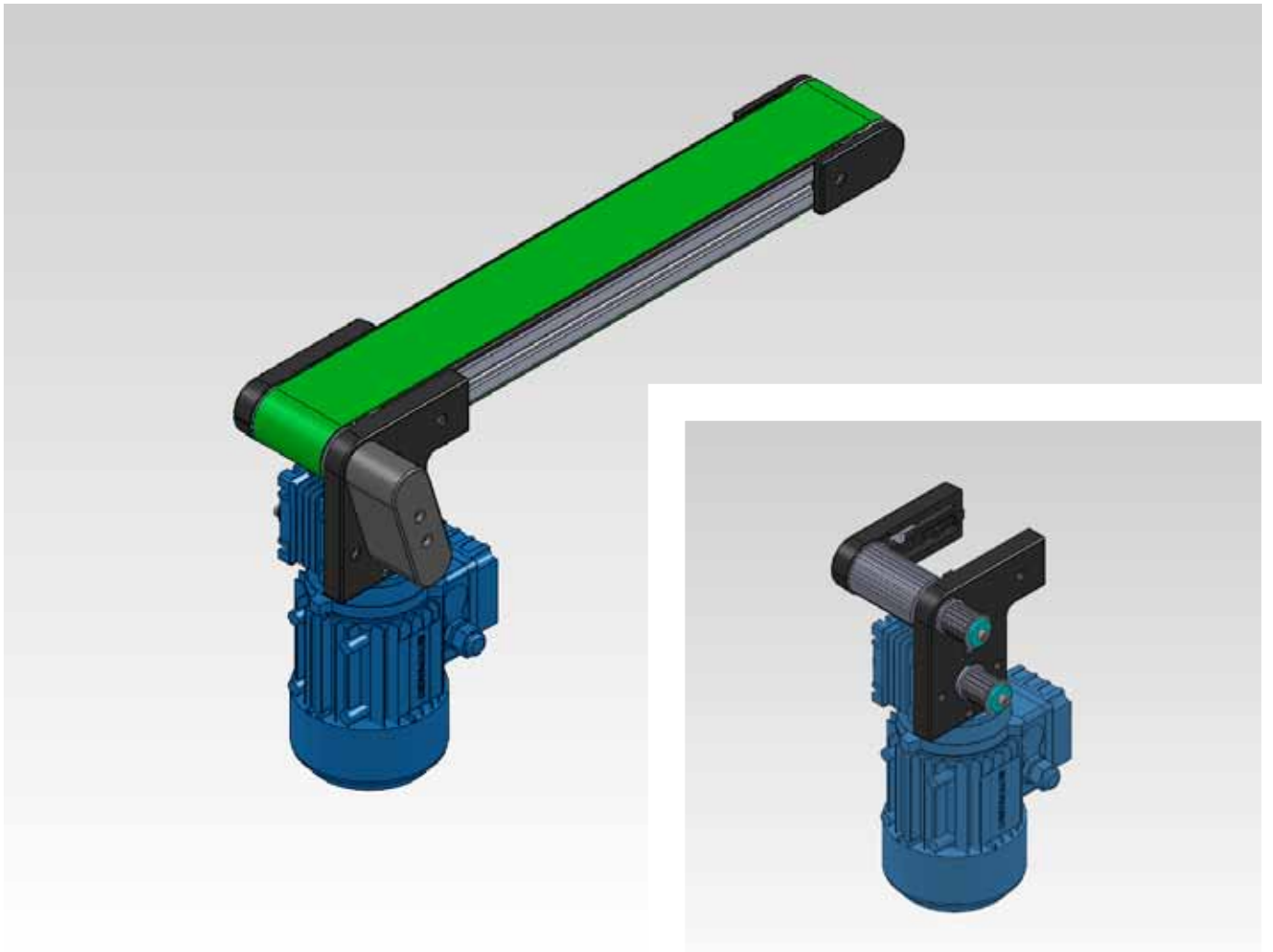
Motors : see page 56
Belts : see page 57



Reference C 040 54 000

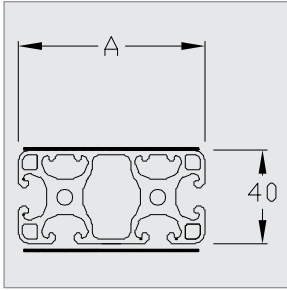
eg. width A = 80

thus ref = C 080 54 000



Central drive

Flat belt



Technical data

Two parallel flat belt conveyors driven by only one motor, for wide components. Two belts enable the use of free space.

- x Adjustable position of the drive along the profile.
- x Distance between the 2 conveyors adaptable on request.
- x Stainless steel plate on option.

Dimensions (mm)

- x Width A : 40 - 80
- x Length L : 400 to 6 000
- x Length of profile : LP = L-50
- x Length of belt : Lc = (2xL+375) x 0,992
- x Width of belt : A-5

Gear motor

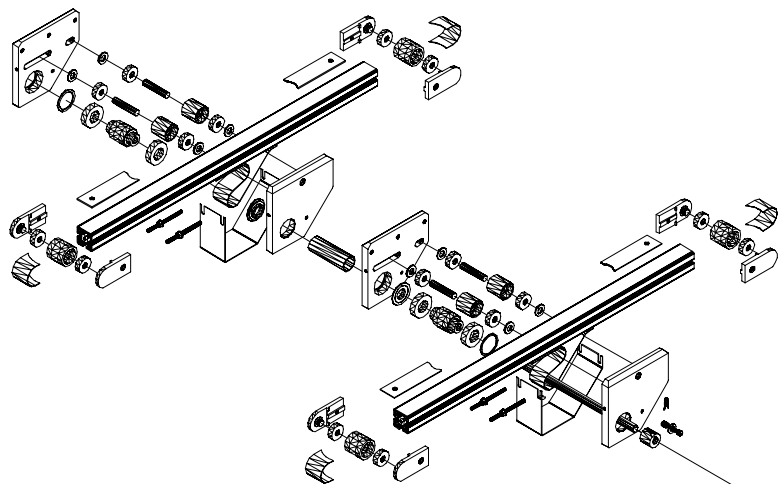
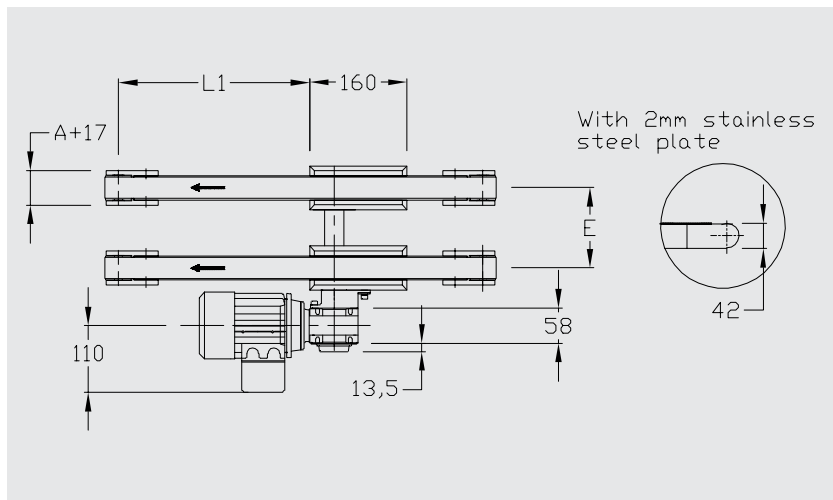
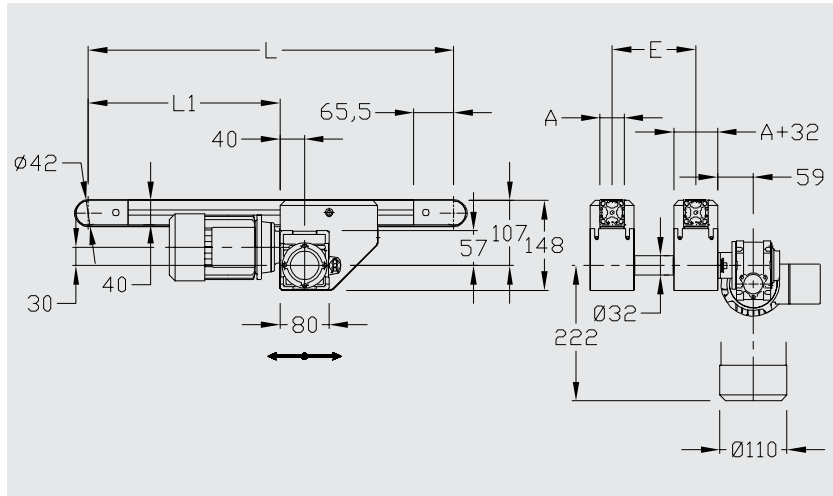
- x 230 V single-phase and 230/400 V three-phase speed (m/min) +/- 10% : 2 - 3 - 6 - 9 - 12 - 18 - 24
- x 24 VDC on request

Installation tension : 0,5 % maxi

Data and positions

Motors : see page 56

Belts : see page 57

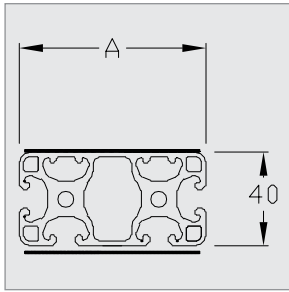




Central drive

Internal motor

Flat belt



Technical data

Two parallel flat belt conveyors driven by only one motor, for wide components. Two belts enable the use of free space. The internal mounting of the motor facilitates the integration.

- x Adjustable position of the drive along the profile.
- x Distance between the 2 conveyors adaptable on request.
- x Stainless steel plate on option.

Dimensions (mm)

- x Width A : 40 - 80
- x Length L : 400 to 6 000
- x Length of profile : $LP = L - 50$
- x Length of belt : $Lc = (2xL + 375) \times 0,992$
- x Width of belt : A-5

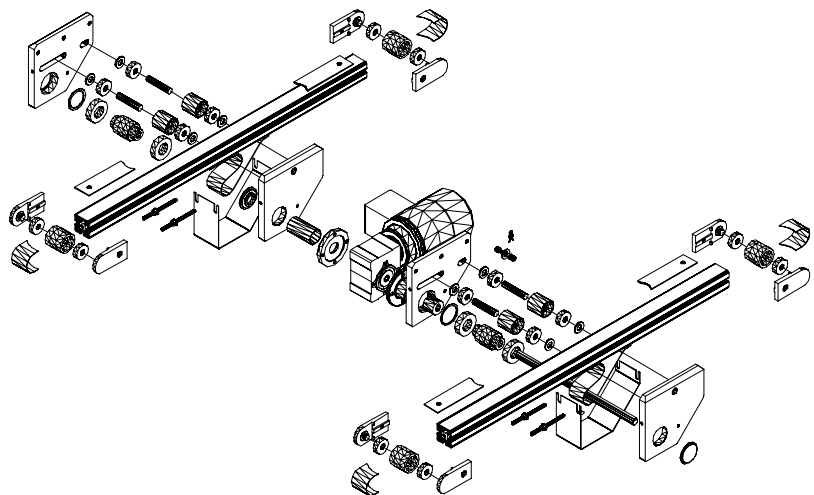
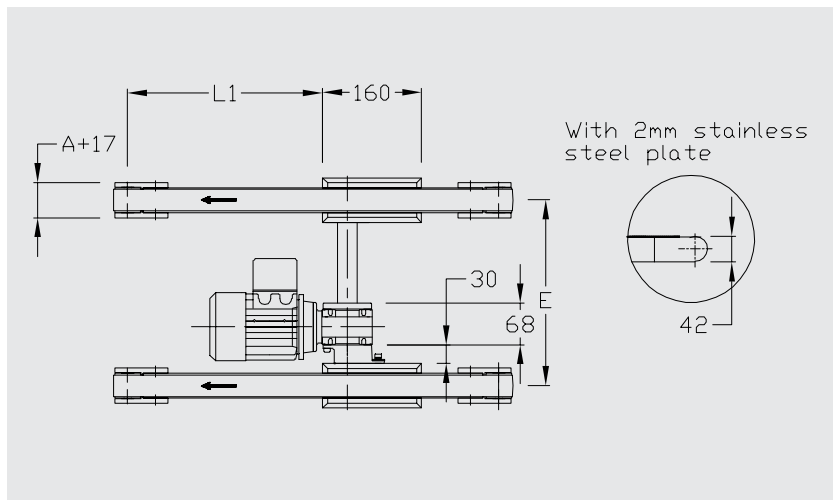
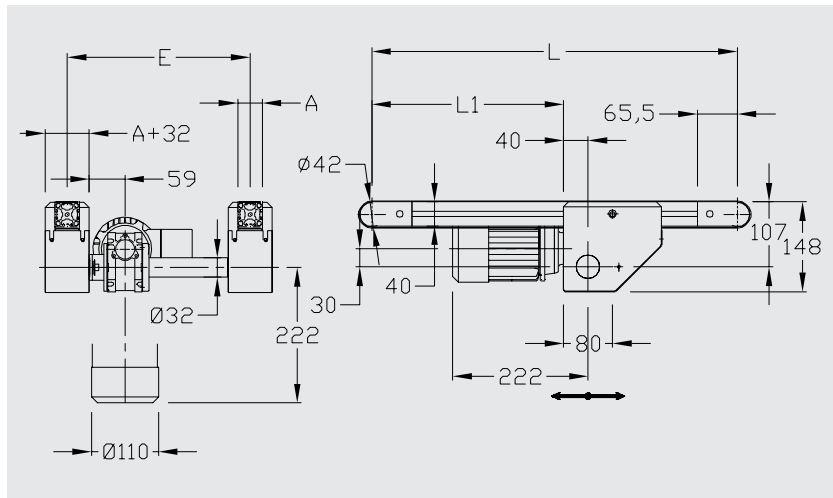
Gear motor

- x 230 V single-phase and 230/400 V three-phase speed (m/min) +/- 10% : 2 - 3 - 6 - 9 - 12 - 18 - 24
- x 24 VDC on request

Data and positions

Motors : see page 56

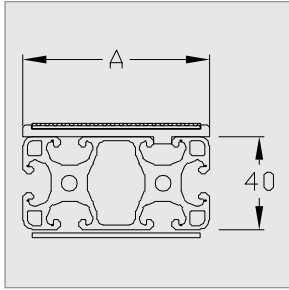
Belts : see page 57





Central drive

Timing belt



Technical data

Two parallel flat belt conveyors driven by only one motor, for wide components.
Two belts enable the use of free space.
Positive driving belt for heavy loads.
Synchronization of the 2 belts.

- x Adjustable position of the drive along the profile.
- x Notched pulleys.
- x Guiding belt PA material.
- x Timing belt, 5 mm step.

Dimensions (mm)

- x Width A : 40 - 80
- x Length L : 400 to 6 000
- x Length of profile : $LP = L - 51$
- x Length of belt : $Lc = (2xL + 368) \times 0,999$
- x Width of belt : 32 and 72 mm

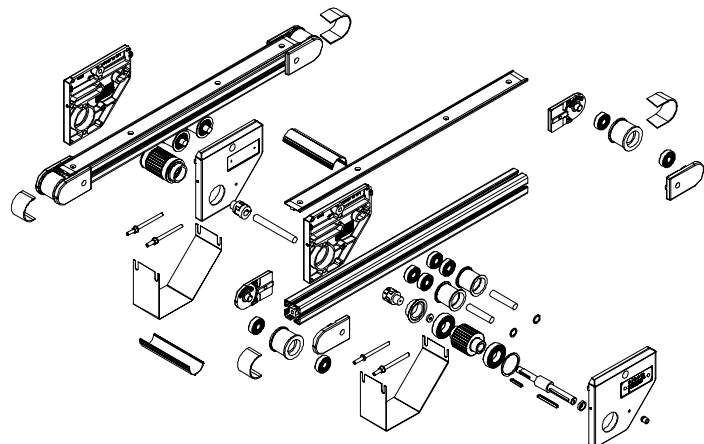
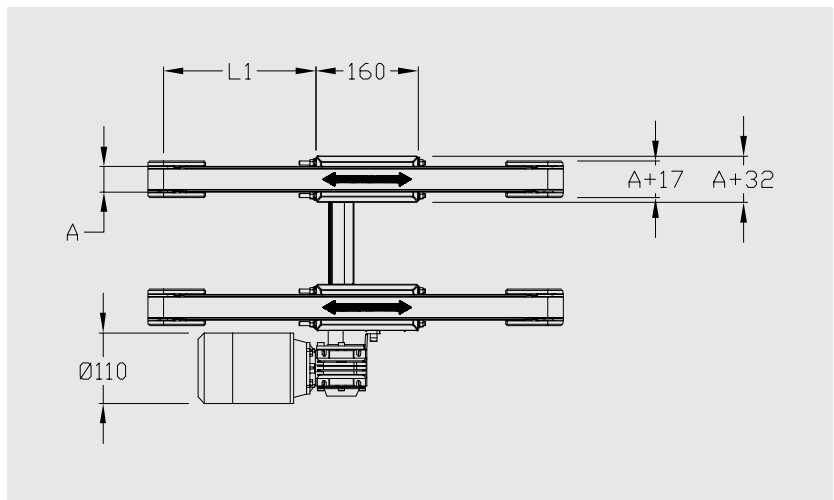
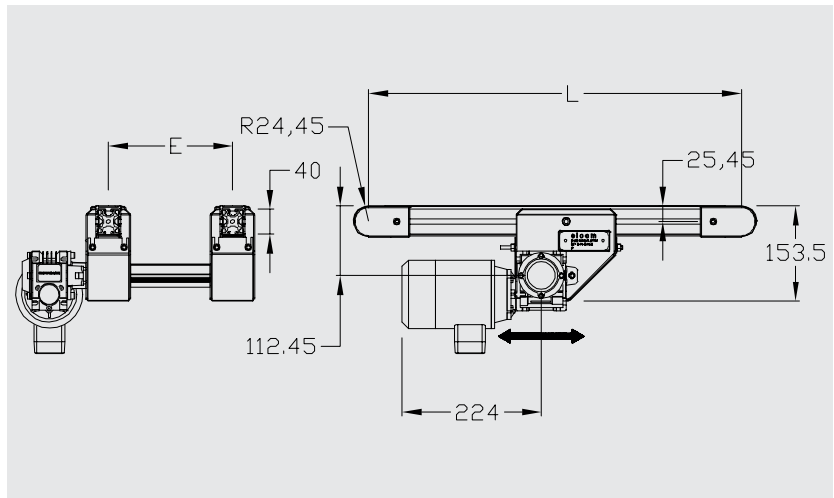
Gear motor

- x 230 V single-phase and 230/400 V three-phase speed (m/min) +/- 10% : 2 - 3 - 6 - 9 - 12 - 18 - 24
- x 24 VDC on request

Installation tension : 0,1 %

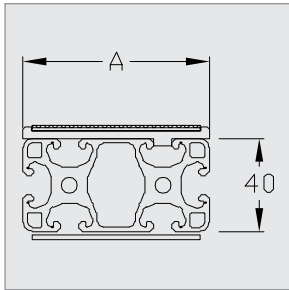
Data and positions

Motors : see page 56
Belts : see page 57





Central drive Internal motor Timing belt



Technical data

Two parallel flat belt conveyors driven by only one motor, for wide components. Two belts enable the use of free space. The internal mounting of the motor facilitates the integration.

Positive driving belt for heavy loads.
Synchronization of the 2 belts.

- x Adjustable position of the drive along the profile.
- x Notched pulleys.
- x Guiding belt PA material.
- x Timing belt, 5 mm step.

Dimensions (mm)

- x Width A : 40 - 80
- x Length L : 400 to 6 000
- x Length of profile : LP = L-51
- x Length of belt : $L_c = [2xL+368] \times 0,999$
- x Width of belt : 32 and 72 mm

Gear motor

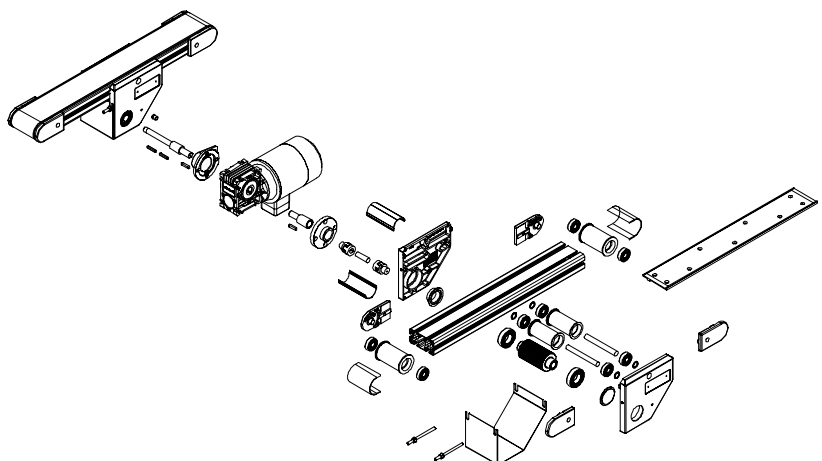
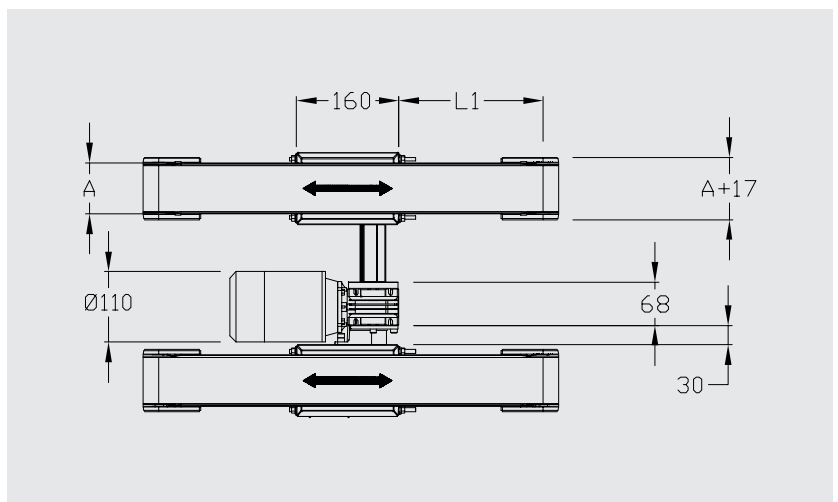
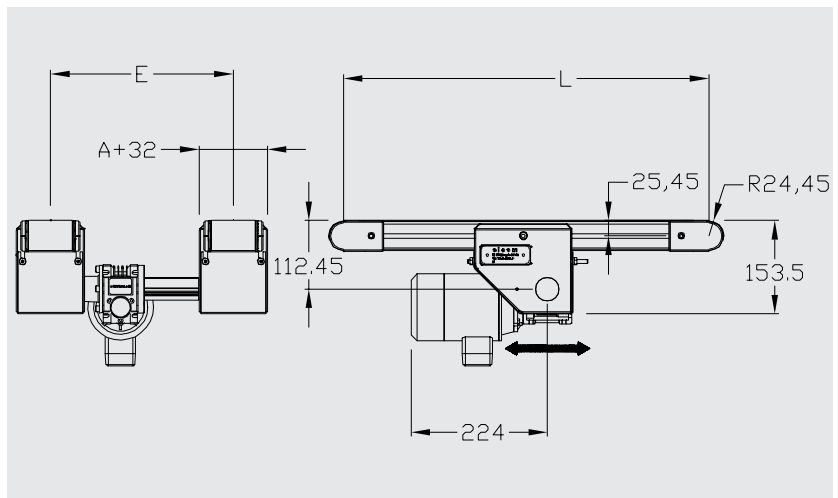
- x 230 V single-phase and 230/400 V three-phase speed (m/min) +/- 10% : 2 - 3 - 6 - 9 - 12 - 18 - 24
- x 24 VDC on request

Installation tension : 0,1 %

Data and positions

Motors : see page 56

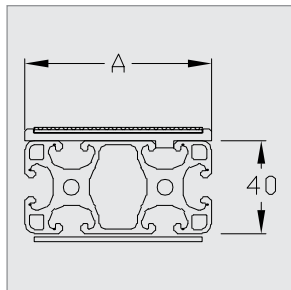
Belts : see page 57







End drive Timing belt



Technical data

Two parallel flat belt conveyors driven by only one motor, for wide components. Two belts enable the use of free space. Positive driving belt for heavy loads.

- x Notched pulleys.
- x Guiding belt PA material.
- x Timing belt, 5 mm step.

Dimensions (mm)

- x Width A : 40 - 80
- x Length L : 400 to 6 000
- x Length of profile : LP = L-68,5
- x Length of belt : Lc = (2xL+152) x 0,999
- x Width of belt : 32 and 72 mm

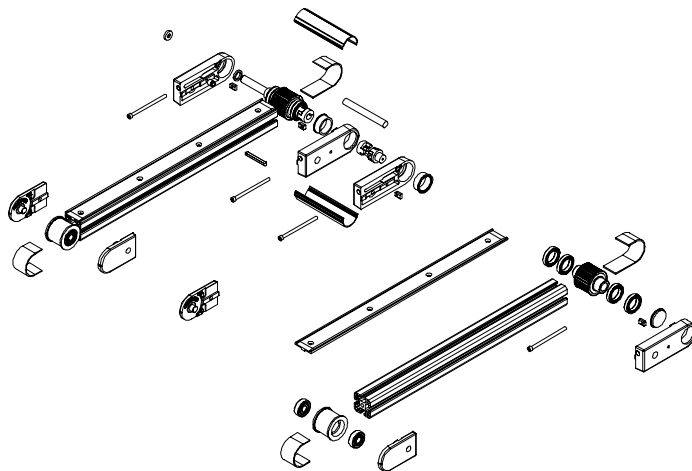
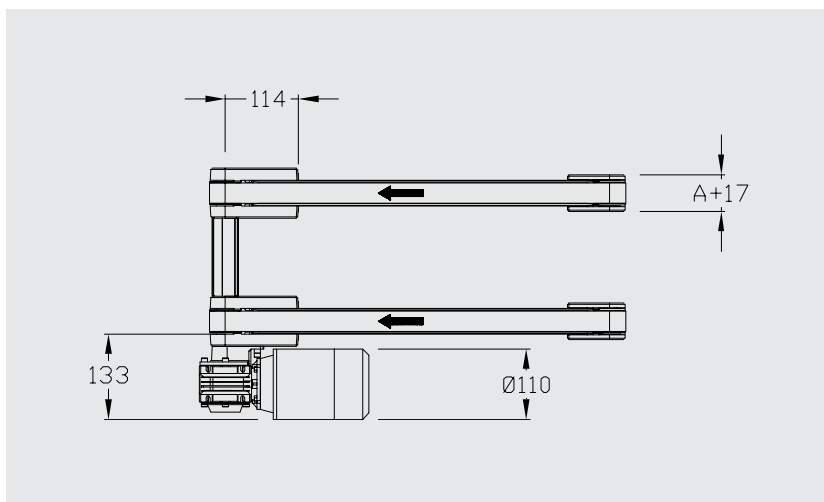
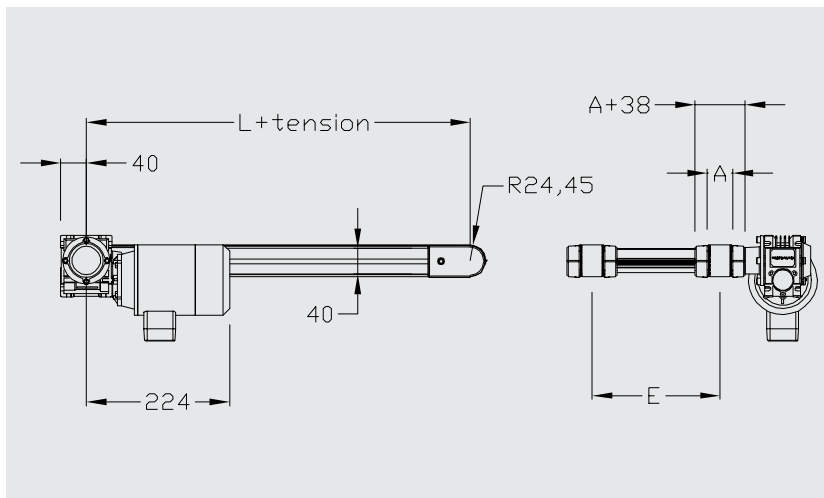
Gear motor

- x 230 V single-phase and 230/400 V three-phase speed (m/min) +/- 10% : 2 - 3 - 6 - 9 - 12 - 18 - 24
- x 24 VDC on request

Installation tension : 0,1 %

Data and positions

Motors : see page 56
Belts : see page 57





INCLINE FLAT BELT CONVEYOR





Technical data

Flat belt conveyor with 1 or 2 angles for building elevators thanks to cleated belts.

For light parts maxi 8 kg.

Dimensions (mm)

x Width A : 200 - 300 - 400

x Length : $L1 + L2 + L3 = 4 \text{ m}$ maxi

Gear motor

x 230 V single-phase and 230/400 V three-phase

x 24 VDC on request

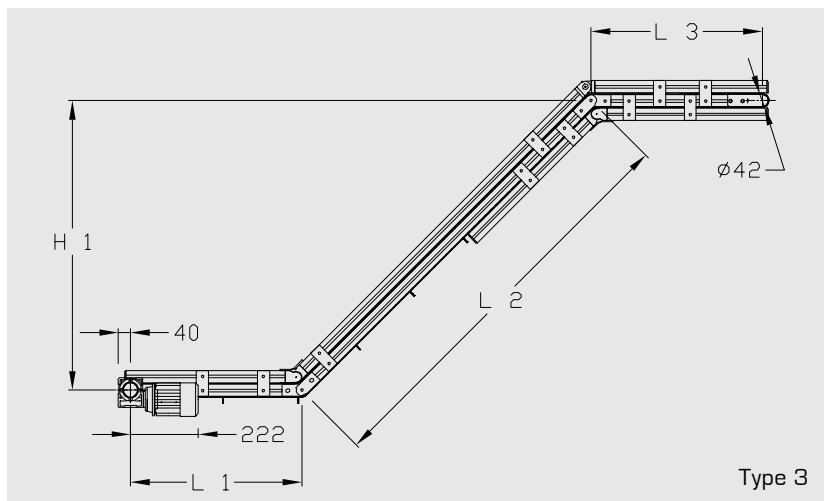
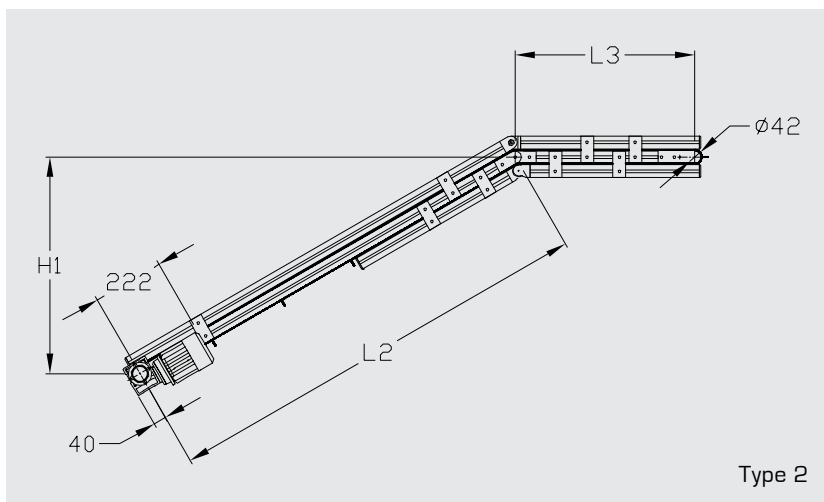
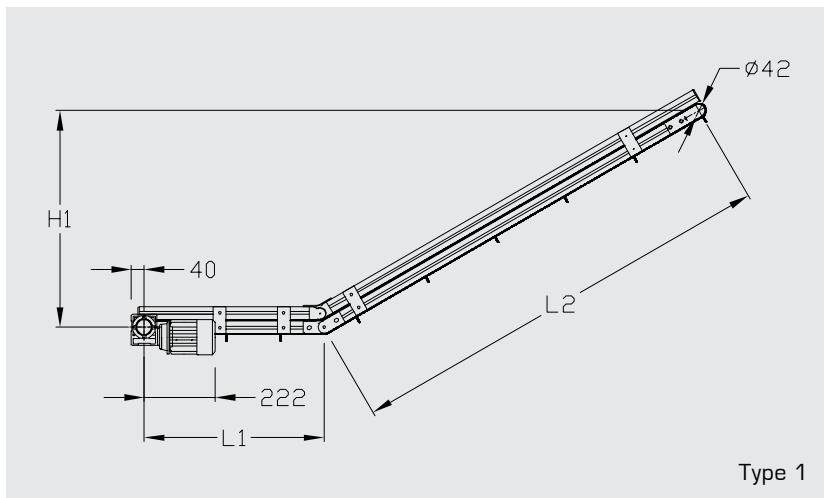
Belts

x Only cleated belts.

Data and positions

Motors : see page 56

Belts : see page 57



Type 1

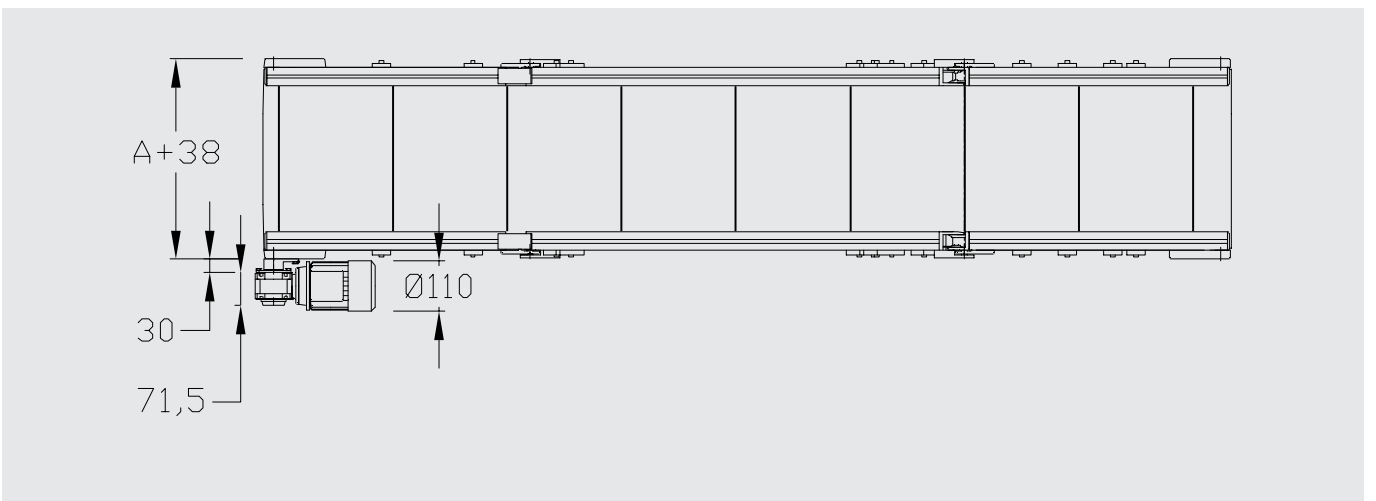
References C 200 70 000
C 300 70 000
C 400 70 000

Type 2

References C 200 75 000
C 300 75 000
C 400 75 000

Type 3

References C 200 80 000
C 300 80 000
C 400 80 000



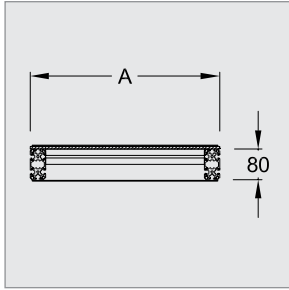
FLAT BELT CONVEYOR 90





End drive

Flat belt



Technical data

Flat belt conveyor for heavy, voluminous components.

- x Drive on extremity drive pulley.
- x Steel pulleys with ball bearings.
- x Aluminium profile frame.

Dimensions (mm)

- x Pulley diameter : 90
- x Width A : 500 - 600 - 700 - 800 - 1000
- x Width of belt : A - 10
- x Length L : 500 to 6 000
- x Length of belt : $(2 \times L) + 300$
- x Length of profile : L-100

Plates

- x Plastic 8 mm.
- x Stainless steel.
- x Galvanized steel.

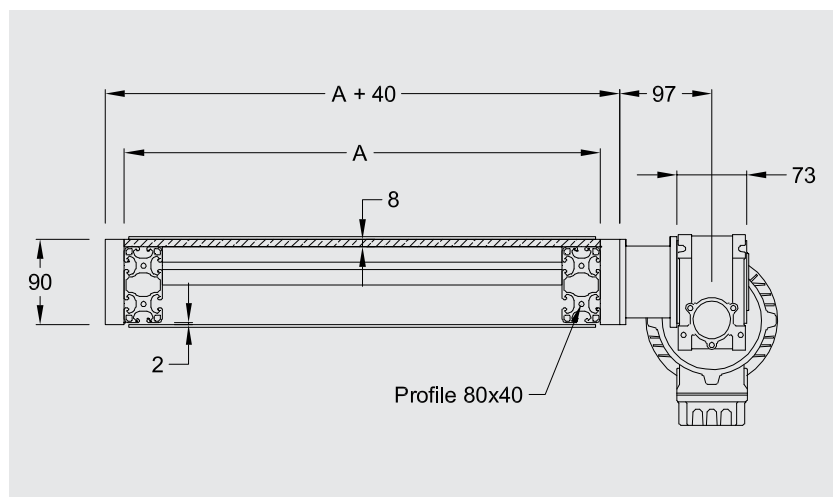
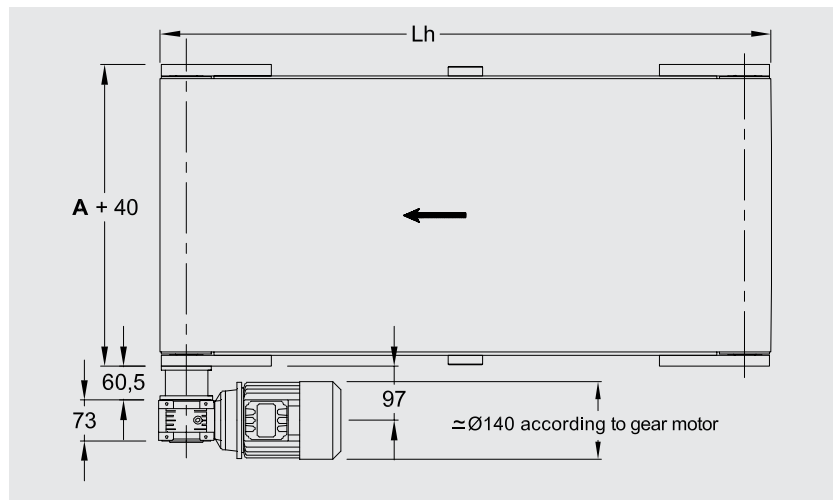
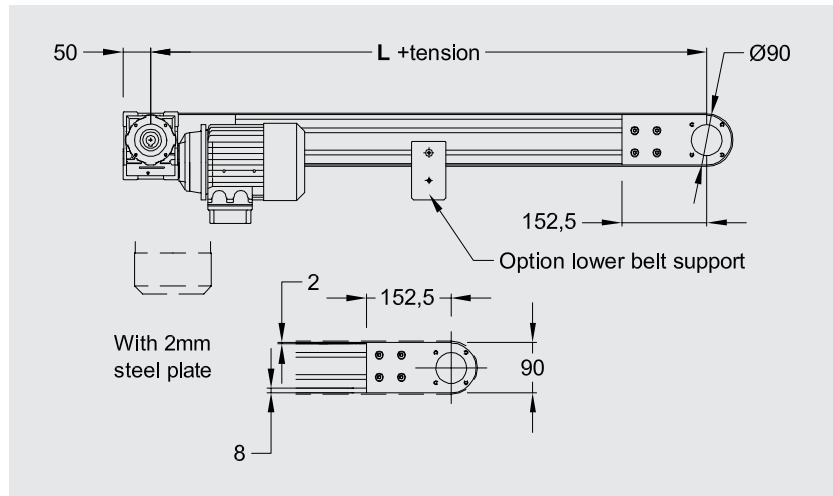
Gear motor

- x 230/400 V Three-phase 50 Hz
- Speed (m/min.) +/- 10% :
4 - 6 - 8 - 10 - 16 - 20 - 26

Installation tension : 0,5 % maxi

Data and positions

Motors : see page 56
Belts : see page 57



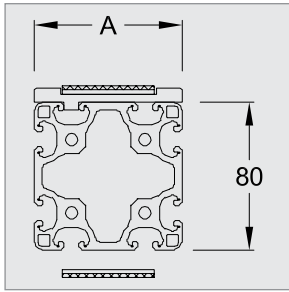
Reference C 0500 10 000

eg. width A = 700

thus ref = C 0700 10 000



End drive Timing belt



Technical data

Compact conveyor on profiles 8 basis 80 mm, for all kinds of components.
Positive driving belt for heavy loads.

- x Notched pulleys with ball bearings.
- x Guiding belt PA material.
- x Timing belt, 10 mm step.
- x Option : timing belt 10 mm step with threaded insert which enables to fix support of parts.

Dimensions (mm)

- x width A : 40 - 80 - 120
- x length L : 500 to 6 000
- x length of profile : LP = L-125
- x length of belt : Lc = (2 x L) + 320
- x width of belt : 25, 50 and 100 mm

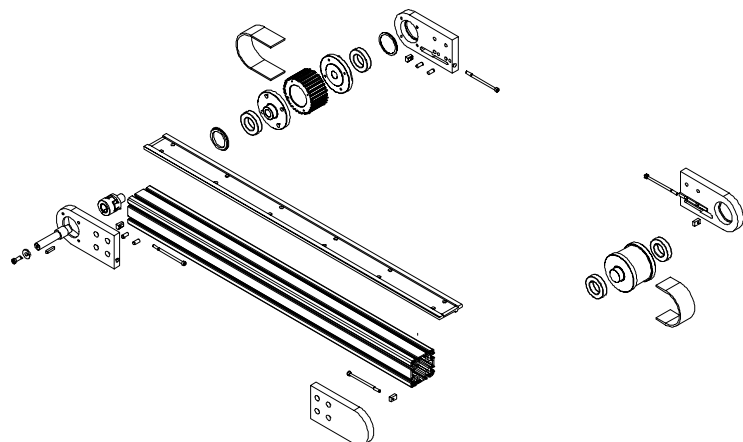
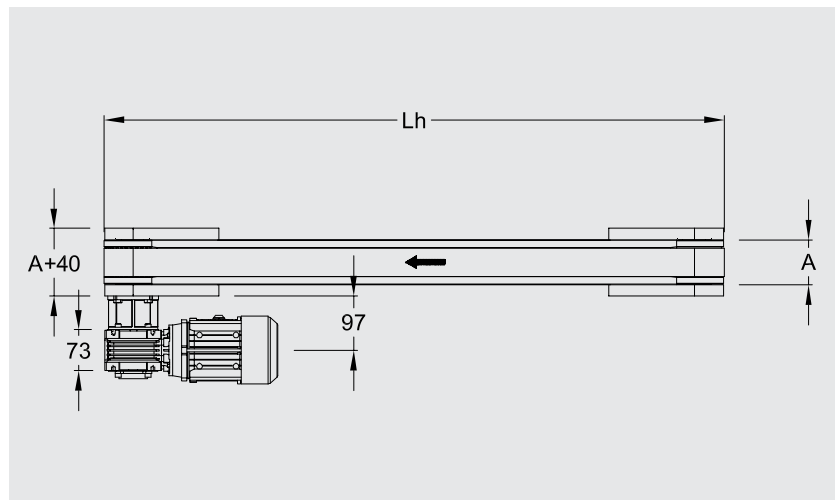
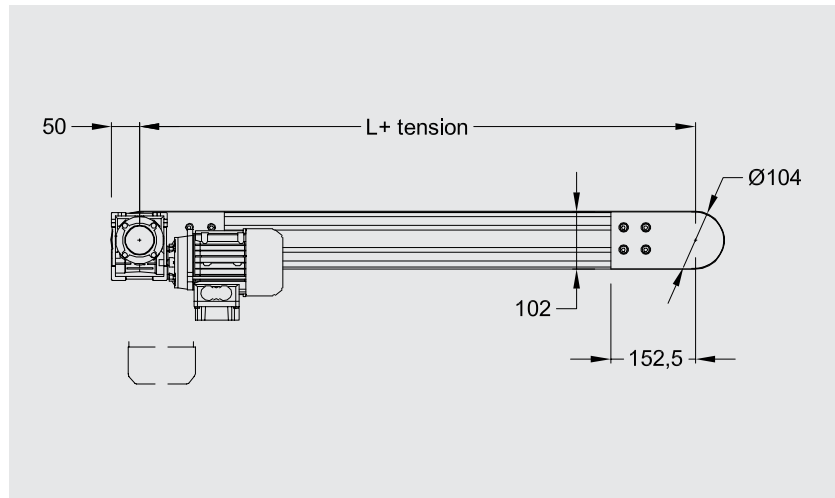
Gear motor

- x 230/400 V three-phase
Speed (m/min.) +/- 10% :
4 - 6 - 8 - 10 - 16 - 20 - 26

Installation tension : 0,1 % maxi

Data and positions

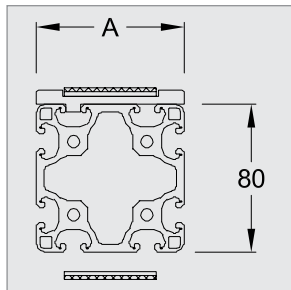
Motors : see page 56
Belts : see page 57



References C 0040 70 000
C 0080 70 000
C 0120 70 000



End drive Timing belt



Technical data

Two parallel flat belt conveyors driven by only one motor, for wide components. Two belts enable the use of free space. Positive driving belt for heavy loads.

- x Notched pulleys with ball bearings.
- x Guiding belt PA material.
- x Timing belt, 10 mm step.
- x Option : timing belt spacing 10 mm with threaded insert which enables to fix support of parts.

Dimensions (mm)

- x Width A : 40 - 80 - 120
- x Length L : 500 to 6 000
- x Length of profile : $LP = L - 125$
- x Length of belt : $Lc = (2 \times L) + 320$
- x Width of belt : 25, 50 and 100 mm

Gear motor

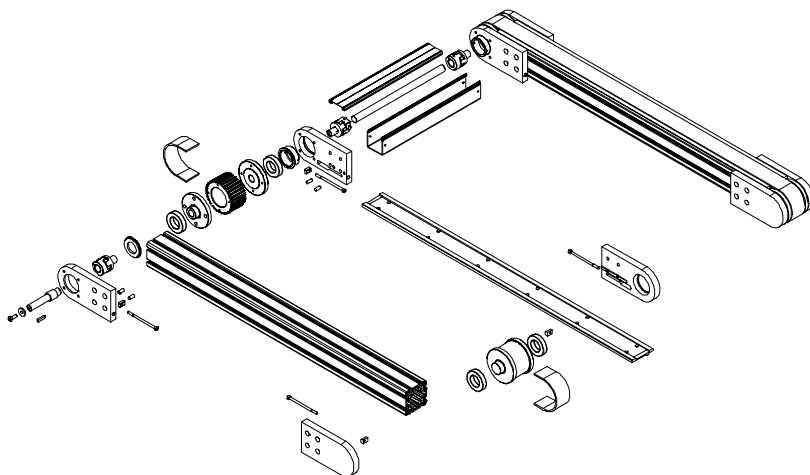
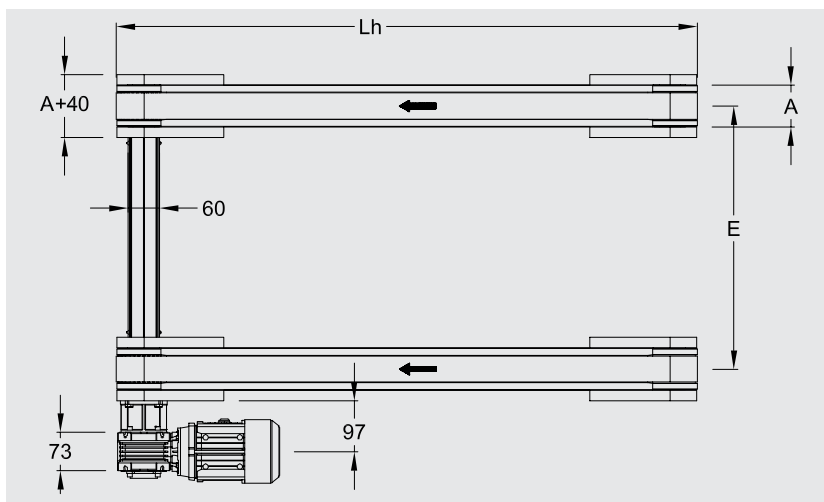
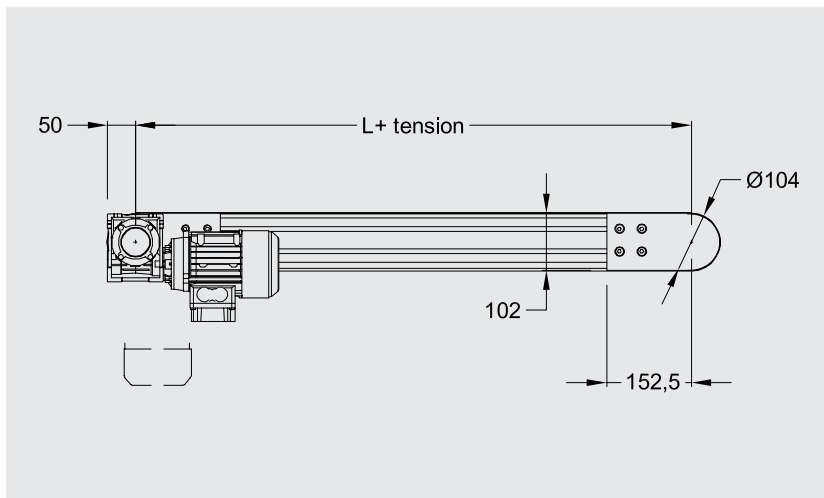
- x 230/400 V three-phase speed (m/min) +/- 10% : 4 - 6 - 8 - 10 - 16 - 20 - 26

Installation tension : 0,1 %

Data and positions

Motors : see page 56

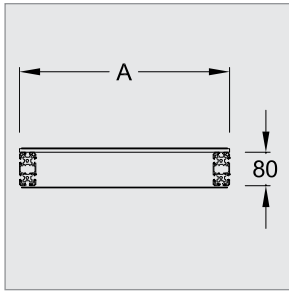
Belts : see page 57



References C 0040 80 000
C 0080 80 000
C 0120 80 000



End drive Motor below Flat belt



Technical data

Flat belt conveyor for heavy, voluminous components.

- x Drive of extremity drive pulley by timing belt 10 mm step width 25 mm.
- x Pulley with ball bearings.
- x Aluminium profile frame.

Dimensions (mm)

- x Pulley diameter : 90
- x Width A : 500 - 600 - 700 - 800 - 1000
- x Width of belt : A - 10
- x Length L : 500 to 6 000
- x Length of belt : $(2 \times L) + 300$

Plates

- x Plastic 8 mm.
- x Stainless steel.
- x Galvanized steel.

Gear motor

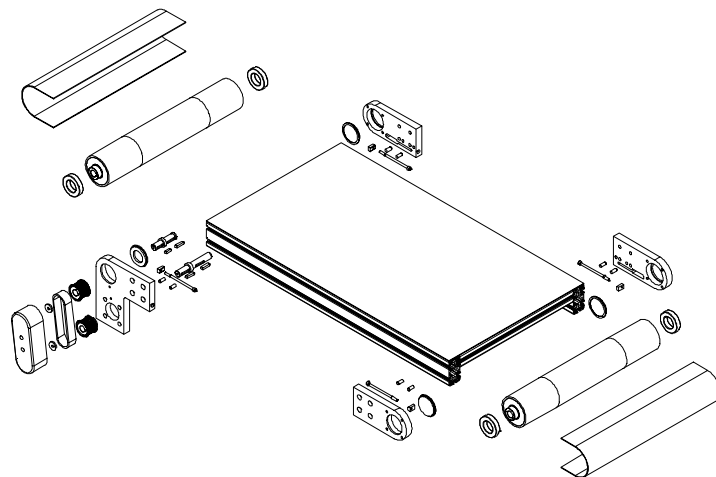
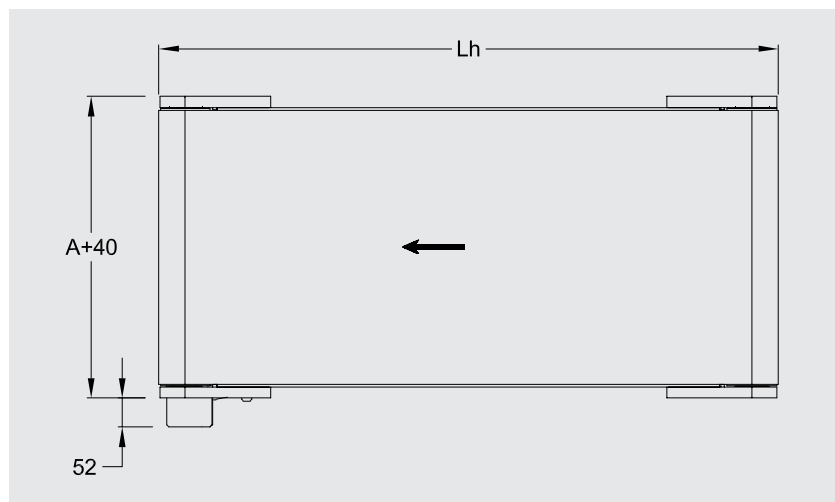
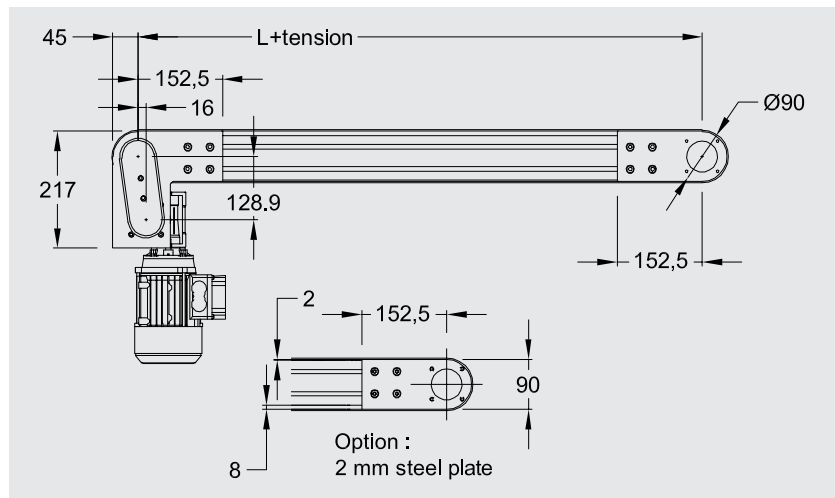
- x 230/400 V Three-phase 50 Hz
- Speed (m/min) +/- 10% :
4 - 6 - 8 - 10 - 16 - 20 - 26

Installation tension : 0,5 % maxi

Data and positions

Motors : see page 56

Belts : see page 57

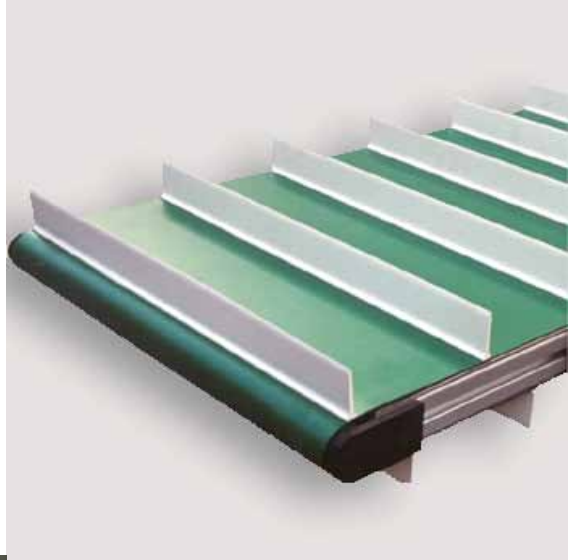


Reference C 0500 53 000

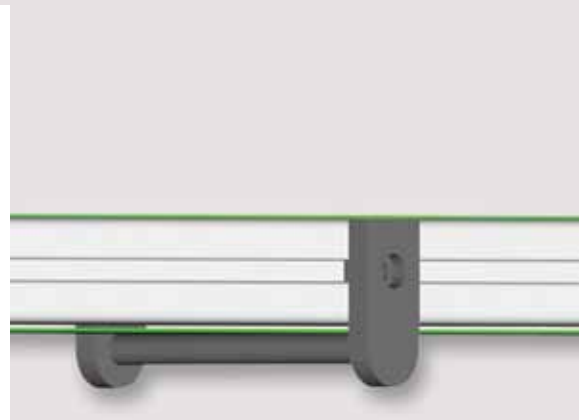
eg. width A = 700

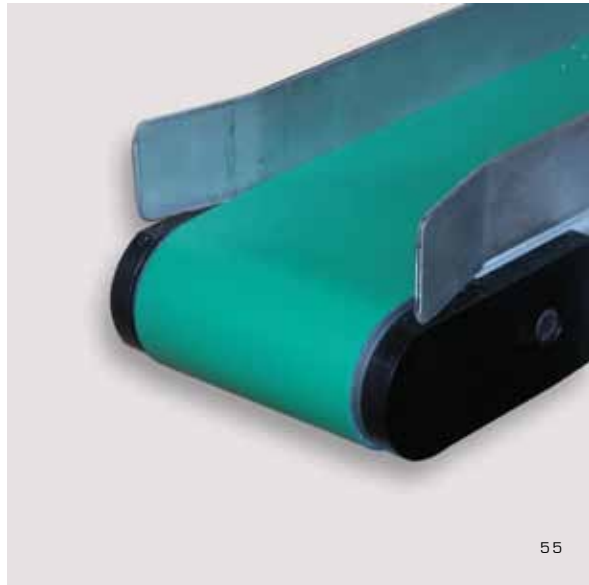
thus ref = C 0700 53 000





ACCESSORIES





x Gear motor 24 VDC :

Power : 0,037 Kw
 Maximum current : 2,5 A
 IP 65

x Gear motor 230 V single-phase 50 Hz :

Power : 0,09 Kw
 Maximum current : 0,4 A
 IP 54

x Gear motor 230-400V three-phase 50 Hz :

Power : 0,09 Kw
 Maximum current : 0,4 A
 IP 54

x Gear motor 230-400V three-phase 50 Hz :

Power : 0,25 Kw
 Maximum current : 0,83 A
 IP 54

Other motors on request.

Frequency inverter :

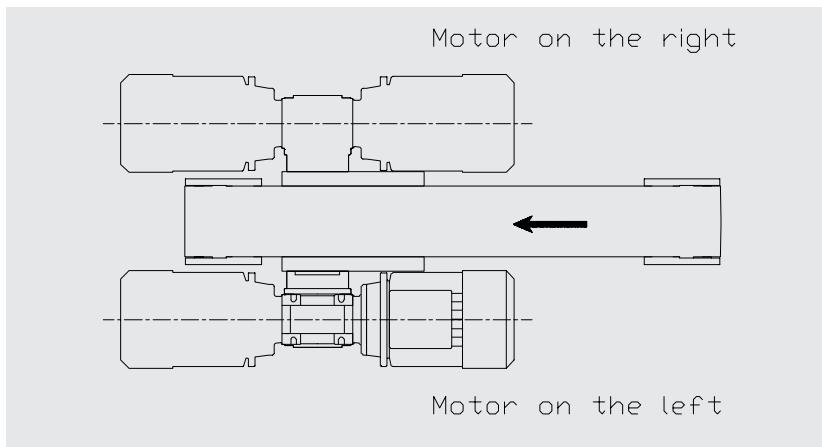
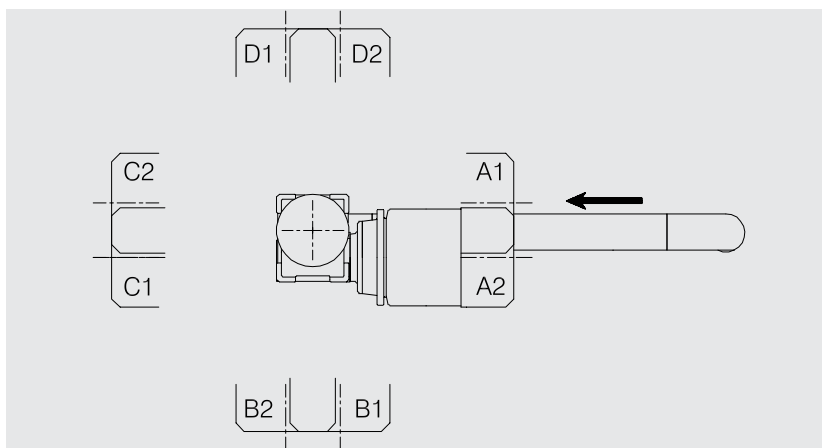
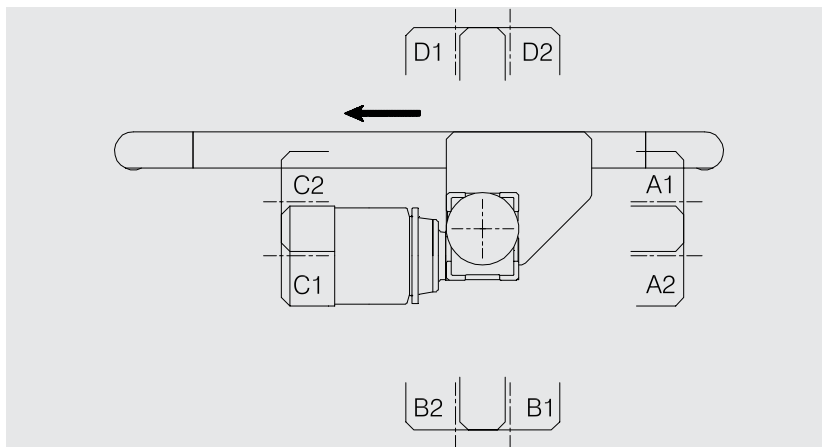
x Reference C000 30 001 :
 for 100 w maximum.

x Reference C000 30 002 :
 for 400 w maximum.

x Power supply 230 V single-phase 50 Hz output 230 V 400 three-phase.

x Variation with standard motor +/- 20% of the speed.

x Possible use of motor with forced draught.





KIND OF BELT	APPLICATION	SPECIAL TECHNICAL DATA / USE	COLOUR
PVC	Standard For conveying all kind of parts and material.	- Antistatic - Food quality	- Grey - Green - Black
Polyurethane	Belt adapted to aggressive parts, oily environment. Possible important accumulations of parts.	- Antistatic - Food quality - Army - Possible welding of cleated belts	- Green - White - Blue
Rubber	Good abrasion, cut and shock resistance.	Very good adherence	- Green
Silicone	For conveying parts at high temperature.	Very good adherence	- White

Special belts on request.

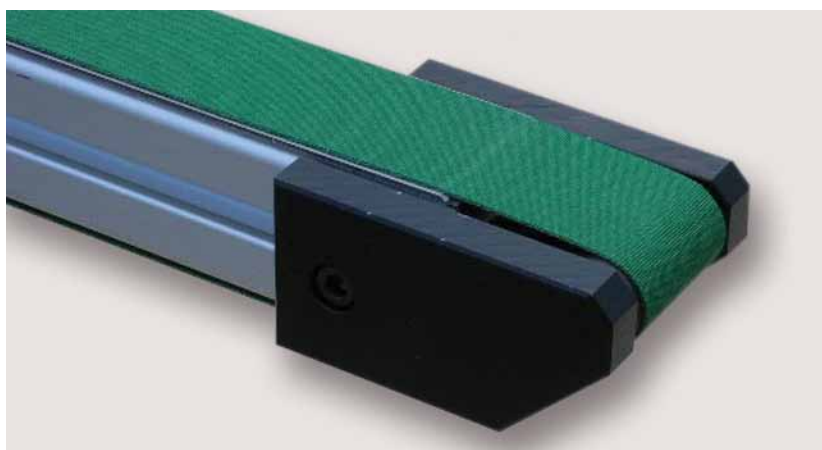
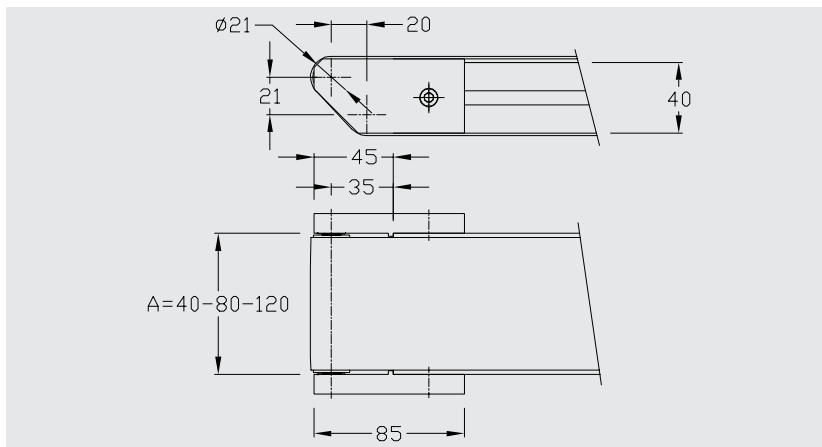
Enables to decrease the radius in end of the conveyor 40.

Particularly adapted for passing small components between two conveyors.

x Width A : 40 - 80 - 120

Belt rigidity with tension 1%
tension : 5N/mm maxi

Installation tension : 0,5 % maxi



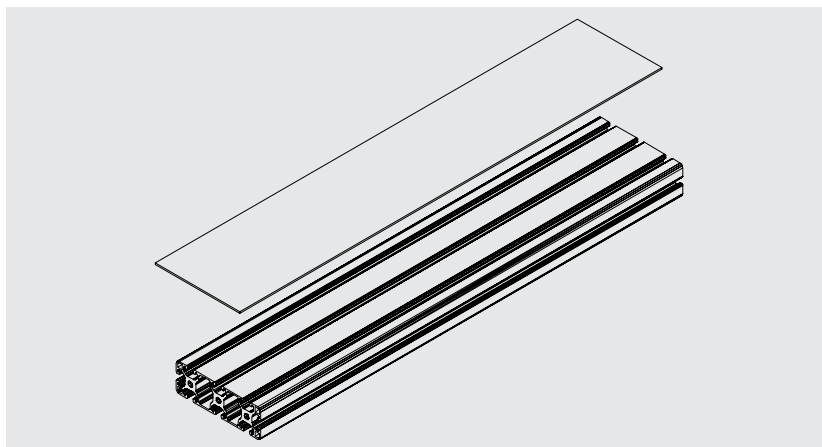
References C 040 30 000
C 080 30 000
C 120 30 000

Flat belt conveyor 40

The structure of flat belt conveyors is aluminium profiles.

A stainless or galvanized steel plate, thickness 2 mm, can be added between the belt and the structure, on request.

The conveyors with width 200 to 400 mm are fitted out with stainless steel plates in the standard version.

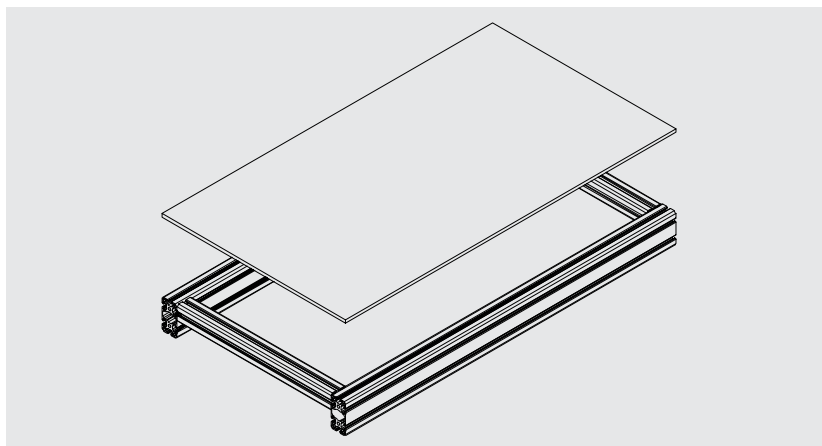


Flat belt conveyor 90

All conveyors are fitted out with a plate.
(Standard = compact laminate 8 mm).

Several types are possible :

- x compact laminate 8 mm
- x galvanized steel 2 mm
- x stainless steel 2 mm



Support to limit sagging of the belt underneath on long conveyors.

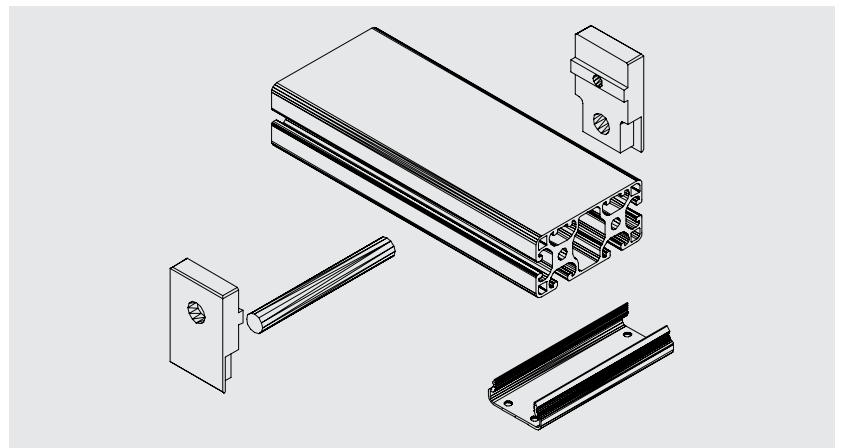
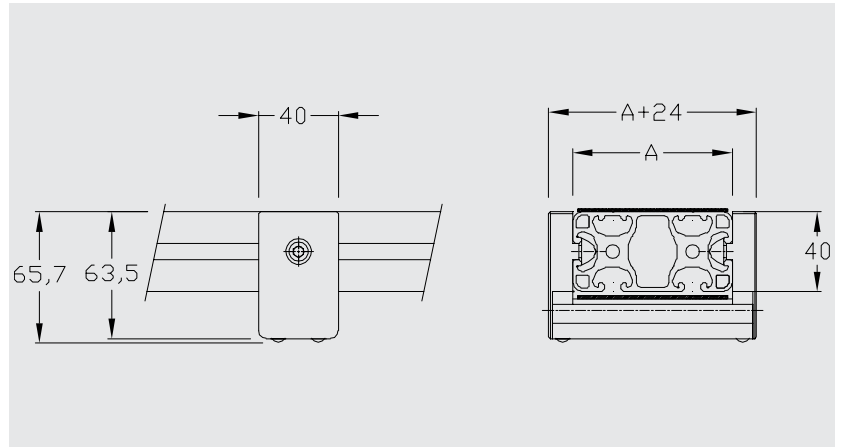
Lower belt support for flat belt conveyor 40.

x Width A : 40 - 80 - 120 - 160 - 200 - 250
- 300 - 400

Reference C 040 60 000

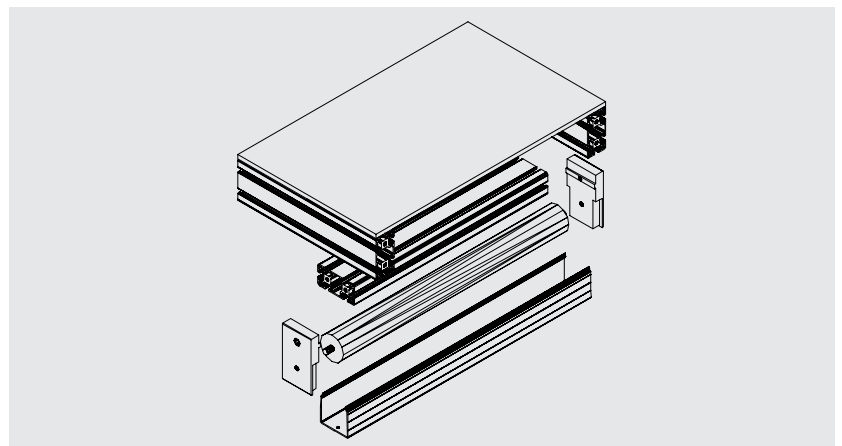
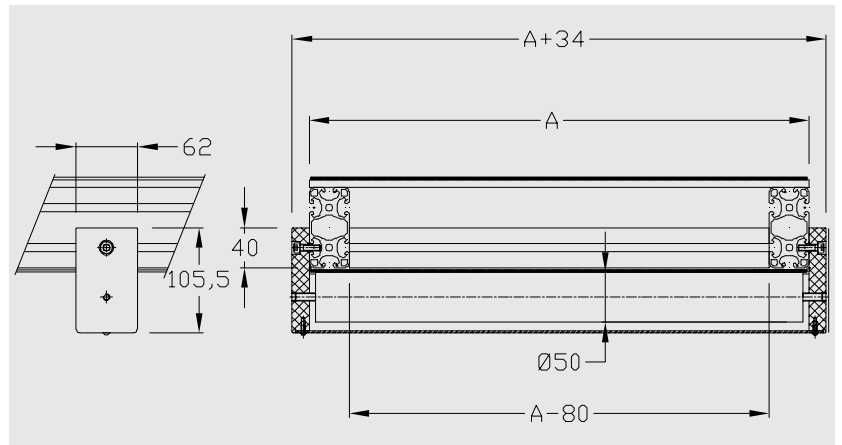
eg. width A = 80

thus ref = C 080 60 000



Lower belt support for flat belt conveyor 90.

x Width A : 500 - 600 - 700 - 800 - 1000

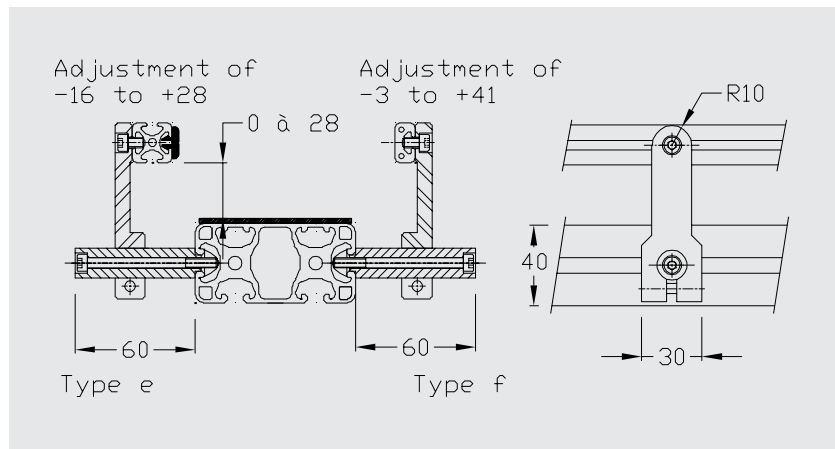
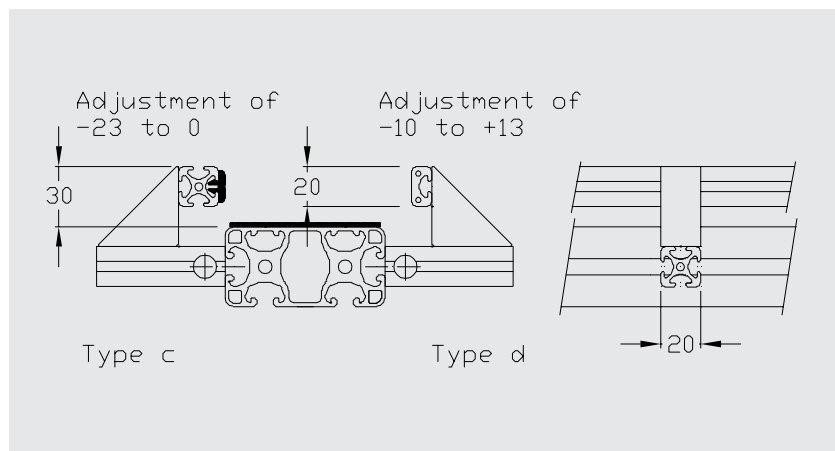
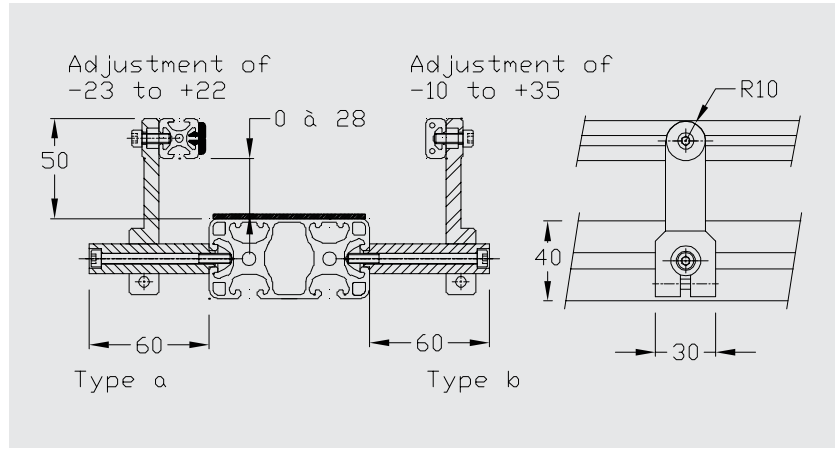


Reference C 0500 20 000

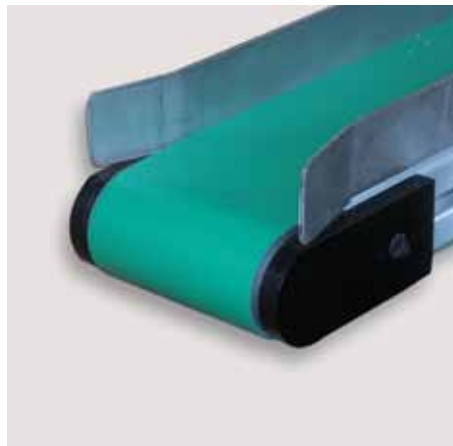
eg. width A = 800

thus ref = C 0800 20 000

Several types of lateral guides are available in standard version.



Special lateral guides on request.



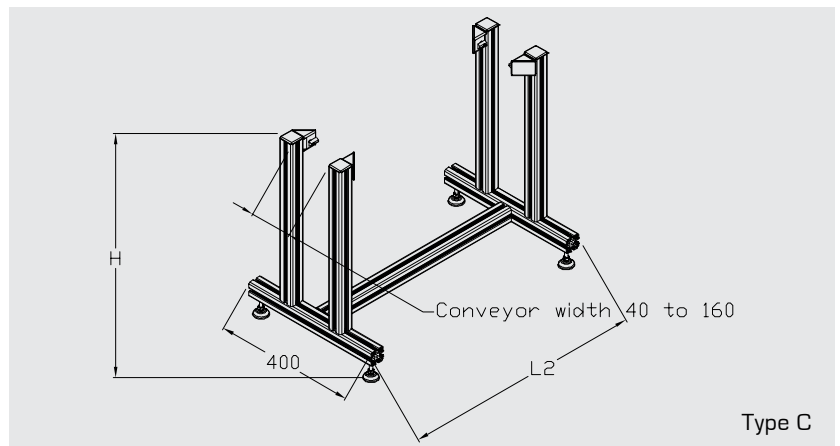
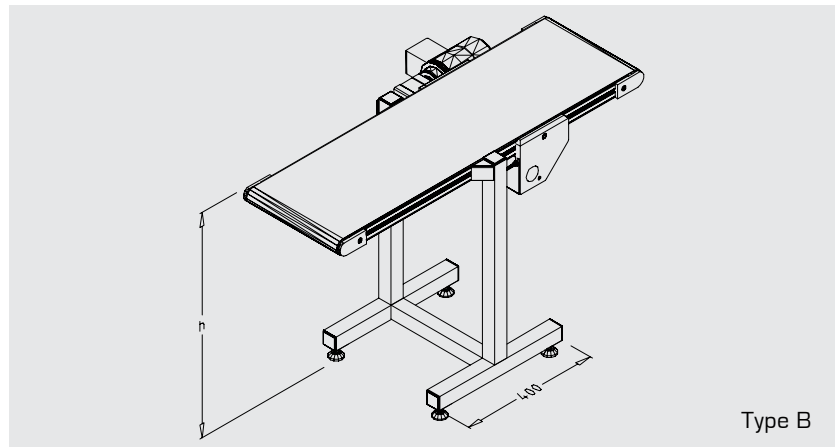
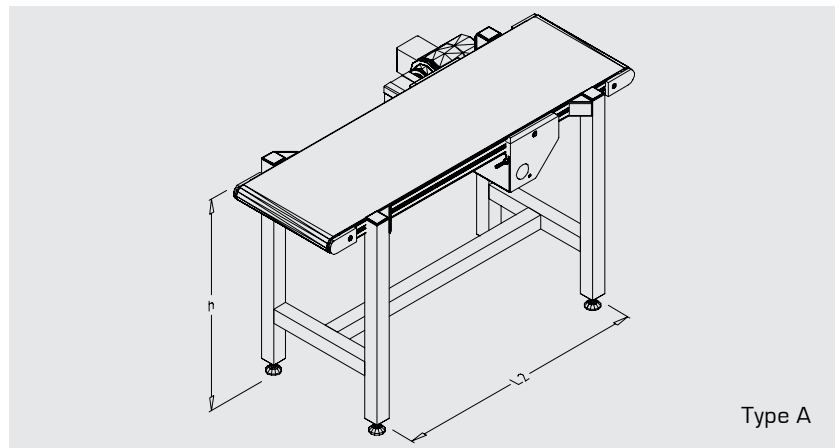
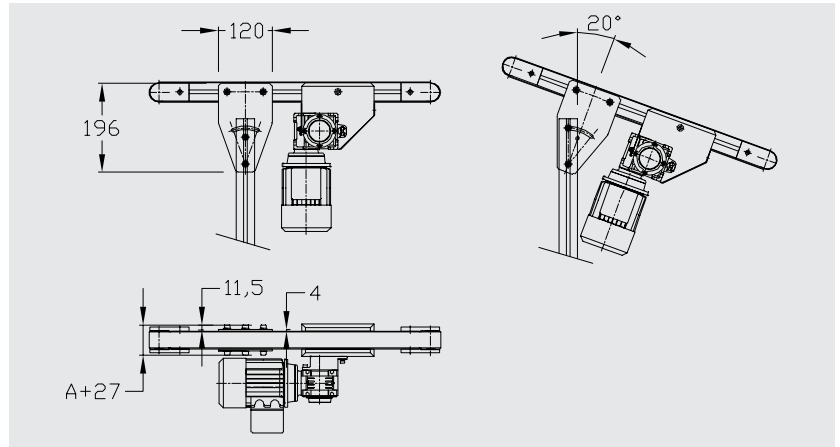
Easy assembly of incline conveyors.
Stainless steel sheet thickness 4 mm.
Set including :

- x 1 stainless steel plate
- x 4 T-Slot nuts 8 St M8
- x 4 screws M8

Reference C 000 10 012

The structure of conveyors is made from item's profiles. Support feet can be built according to your specifications with the profiles and accessories of this range.

Special feet and frame on request.



Applications

For conveying heavy plates.
Allows accumulation.

Technical data

- x Drive with timing belt.
- x Pulley with ball bearings.
- x Guiding belt PA material.
- x Load supported each side on ball bearing.
- x The adjustment of pressure in the inflatable system adjusts the thrust plates.

Dimensions (mm)

- x Width A : 200 to 500 maxi
- x Length 6 m maxi
Possible accumulation over the entire length
Maximum thrust : 25 kg

Gear motor

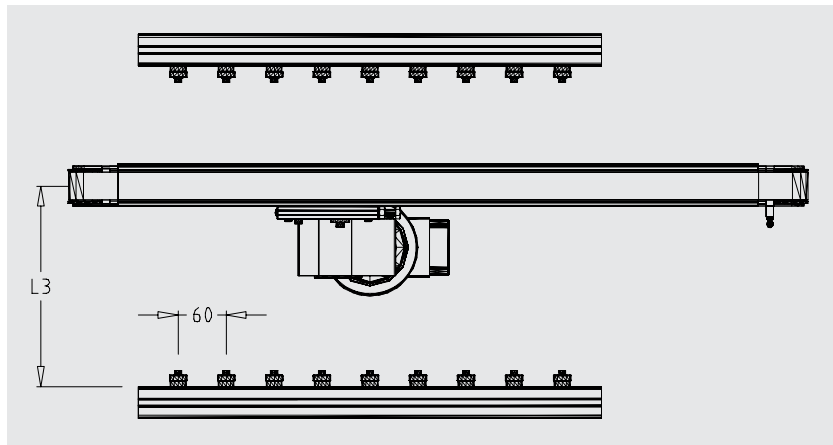
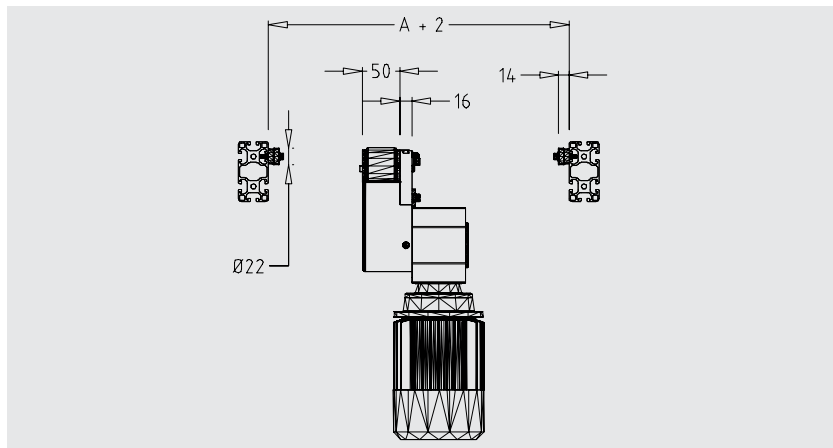
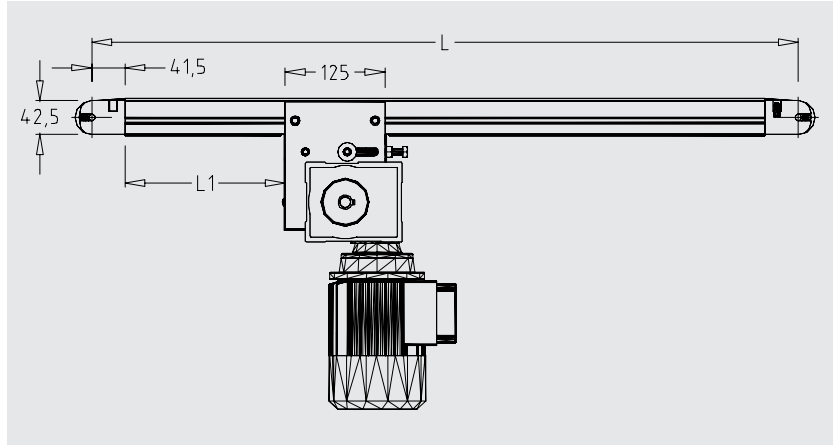
- x 230/400 V Three-phase 50 Hz
Speed (m/min.) +/- 10 % :
5 - 10 - 12 - 16 - 18

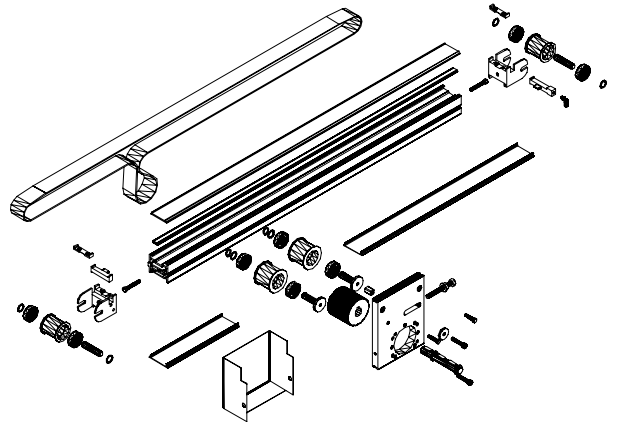
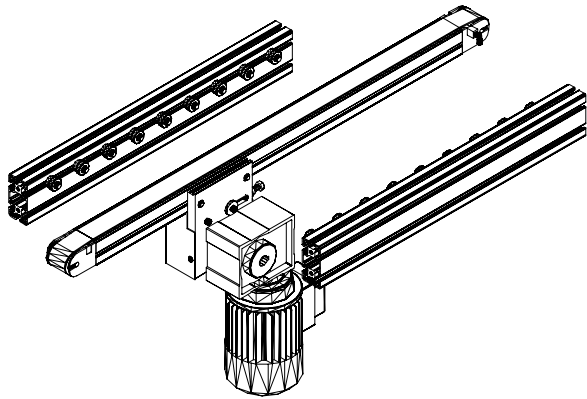
Pressure maxi 0,8 bar

Pression regulator not supplied

Data and positions

Motors : see page 56
Belts : see page 57





FLAT BELT CONVEYOR 20 40 90

FLAT BELT CONVEYOR DETERMINATION

Customer: N° :

Contact : Representative :

Address :
 (if different) Quotation n°:

..... Order n° :

Tel : Fax : E-mail :

Environment / carried component :

Carried load : kg Accumulation : yes no

Conveyor width : mm

Drive : central end double belt Distance between axes E : mm.....

Extremity diam. : 21 yes no Input Output

Conveyor length L : mm

Belt : PVC Antistatic Polyurethane

Timing belt Accumulation Antistatic

Other :

Stainless steel plate : yes no Galvanized steel plate : yes no

Lower belt support : qty

Gear motor IP 54 Other :

230/400 V three-phase 50 Hz 220 single-phase 50 Hz 24 VDC

Other voltage :

Standard speed : m/min Other : m/min

Variable speed from to m/min Power supply 220 V single-phase 50 Hz

Motor position : Right Left L1 : mm

A1 A2 B1 B2 C1 C2 D1 D2 To define

Feet : yes no

Type A h : mm Type C h : mm L2 : mm

Type B h : mm

Other (drawing ref.) :

Lateral guide : yes no

Type A L : mm Type B L : mm

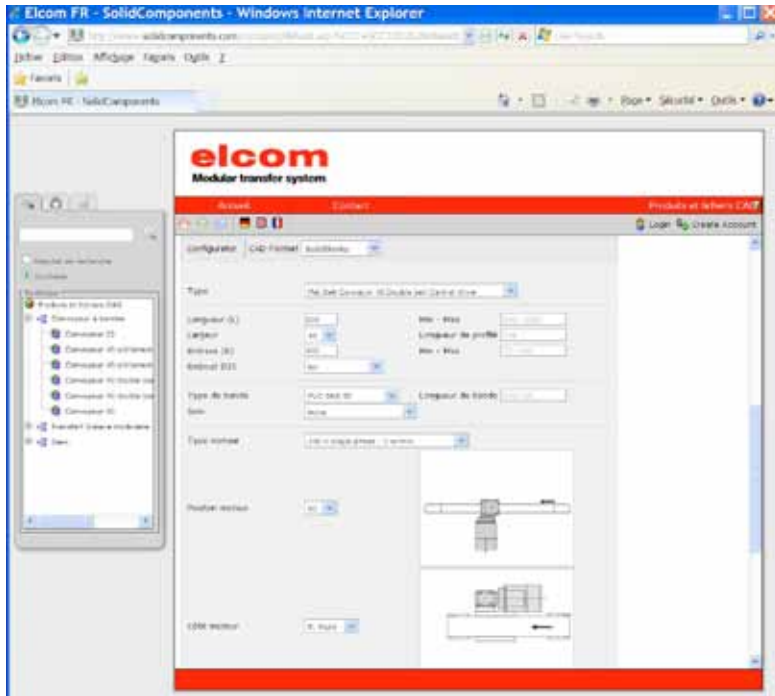
Type C L : mm Type D L : mm

Type E L : mm Type F L : mm

Other (drawing ref.) :

Comments :

Our website www.elcom.fr offers the possibility of configuring yourself on-line the flat belt conveyor corresponding to your needs.



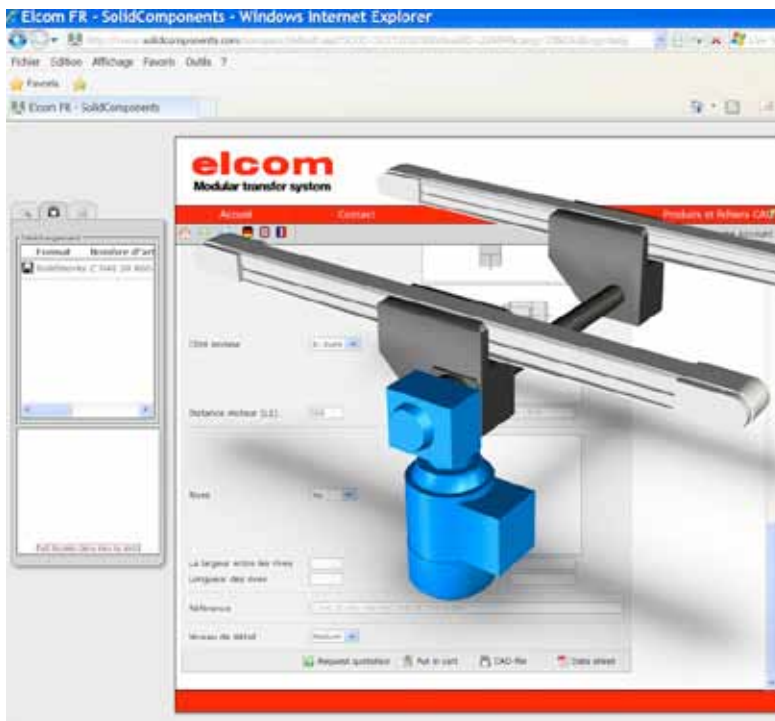
Download the requested solutions in CAD 2D-3D format.

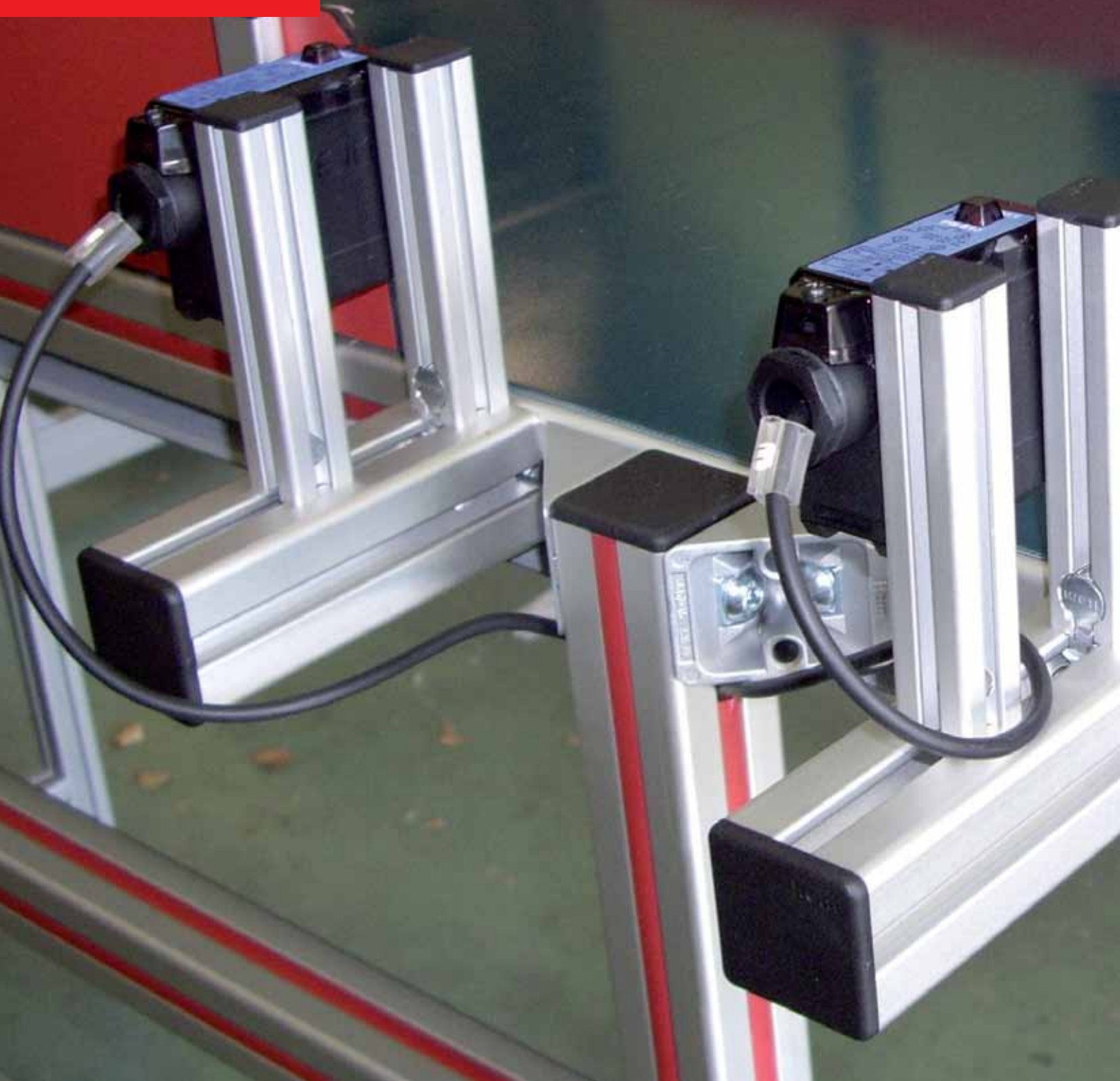
Simple or double belt, with central or end drive.

Standard or special belts, cleated belts...

Widths from 20 mm to 1000 mm.

Standard widths available with thickness 20, 40 or 90 mm.





elcom's flat belt conveyor design, constructed from item's range of profiles, **enables a great modularity.**



The perfect complementarity between flat belt conveyors, profiles and transfer system will facilitate the realization of your ideas.





Lean Manufacturing is a method of continuous improvement which aimed at reducing costs and production times, while improving product quality and safety of employees.

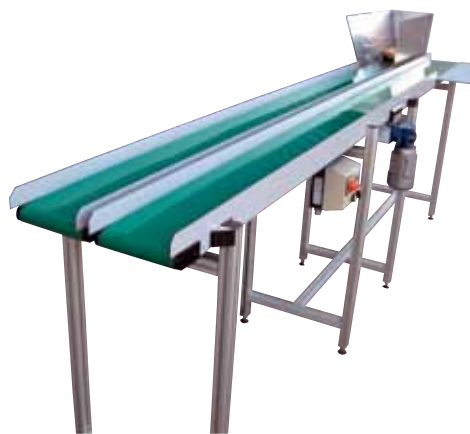
To achieve these objectives, a **Lean Manufacturing** approach consists in reduce or **eliminate the wastings, the rigidities and the variabilities** in order to concentrate on the activity of the company : **create value**.

The integration of conveyors in the production system allows, among other things, of:

- x reduce waiting times between various stages of the manufacturing process
- x simplify and secure the transport of materials, components, finished products
- x eliminate useless operations
- x control the stocks
- x decrease the movements and displacements of employees without added value
- x increase the level of product quality

The **elcom system concept**, arisen from the will of **elcom** to fight against the risks of musculoskeletal disorders (MSD), is an innovative concept combining all of our technologies :
from work benches to modular transfer systems, via lifting boxes or modular elements such as line D30.

The conveyors join perfectly into the **elcom system concept** which offers a complete, personalized, flexible and ready to use solution.



The integration of flat belt conveyors, combined with our modular elements, in the environment and the production flow will enable to eliminate numerous wastings, reduce the risks of musculoskeletal MSD and improve the well-being of your employees at work.



Modular elements for industrialization

elcom

LA LIBERTÉ DE CONCEVOIR

www.elcom.fr

HEAD-OFFICE / PLANTS

1 rue Isaac Asimov
ZAC de la Maladière
38300 BOURGOIN-JALLIEU
Tél. : (+33) 4 74 43 99 61
Fax : (+33) 4 74 28 59 02
e-mail : elcom@elcom.fr

2ND ESTABLISHMENT / PLANT

6 rue Théodule Villeret
Z.A.E. St-Leu
95130 LE PLESSIS-BOUCHARD
Tél. : (+33) 1 34 44 23 00
Fax : (+33) 1 34 44 23 09
elcomparis@elcom.fr

ELCOM WORLDWILDE

Europe	North America
Scandinavia	South America
Australia	Asia

www.elcom.fr