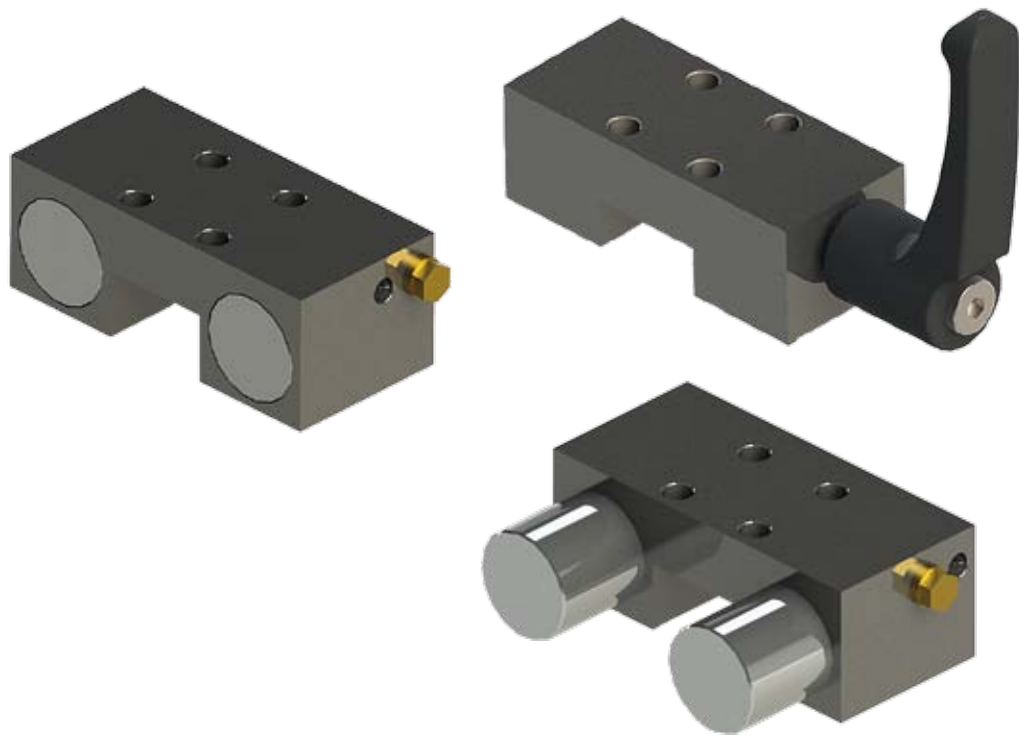


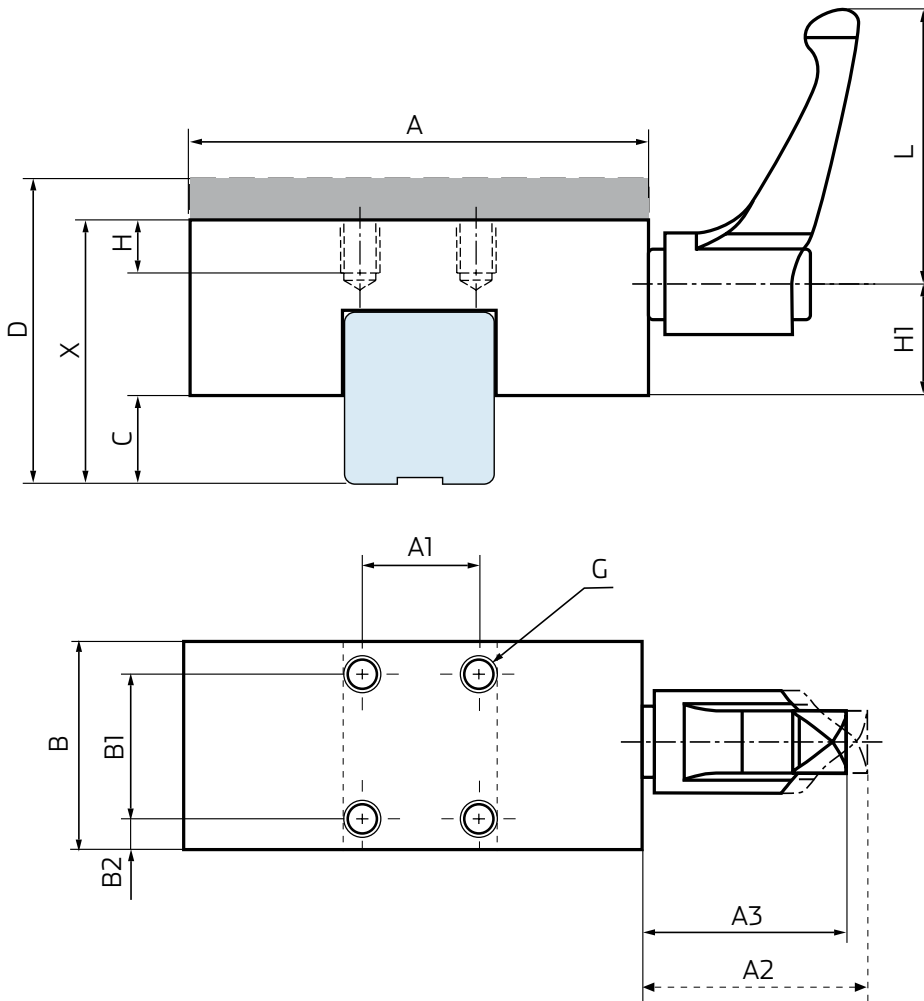
CLAMPING ELEMENT

For AluFlex Linear Guides



Manual clamping element - HK

Function: Locked manually with an L-handle



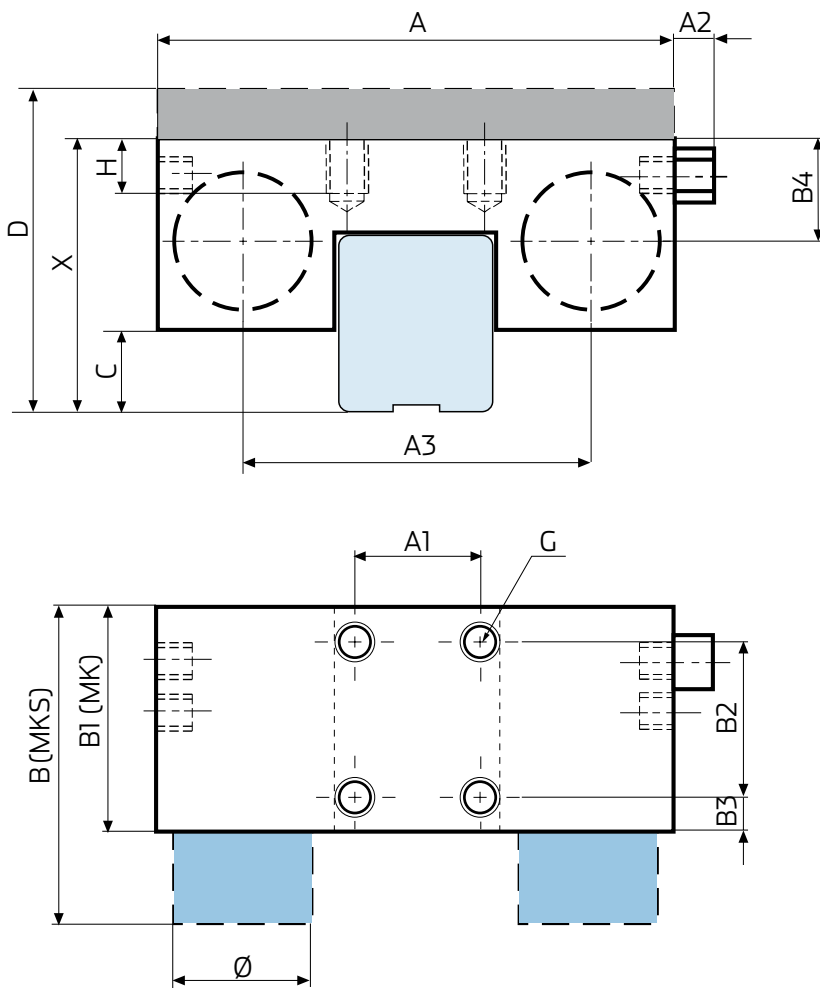
Manual clamping element - HK

Model no.	Rail size	Rail and carriage type	Holding force (N)	Torque on L-handle (Nm)	A	A1	A2	A3	B	B1	B2	C	D	X	G	L	H	H1
HK 1501 A	15	MSA-E	1200	5	47	17	33,5	30,5	25	17	4	6,5	24	24	M4	44	5	12,5
HK 1501 A-PHK 15-3	15	MSB-TE, E, TS, S	1200	5	47	17	33,5	30,5	25	17	4	3,5	24	21	M4	44	5	12,5
HK 1501 A-PHK 15-4	15	MSA-S	1200	5	47	17	33,5	30,5	25	17	4	6,5	28	24	M4	44	5	12,5
HK 2001 A-PHK 20-1	20	MSA-E, LE, S, LS	1200	7	60	15	41,5	38,5	24	15	4,5	9	30	29	M5	63	6	13
HK 2001 A-PHK 20-2	20	MSB-TE, E, TS, S	1200	7	60	15	41,5	38,5	24	15	4,5	6	28	26	M5	63	6	13
HK 2501 A	25	MSA-E, LE	1200	7	70	20	41,5	38,5	30	20	5	12	36	36	M6	63	8	15
HK 2501 A-PHK 25-1	25	MSB-TE, E, TS, S	1200	7	70	20	41,5	38,5	30	20	5	8	33	32	M6	63	8	15
HK 2501 A-PHK 25-4	25	MSA-S, LS	1200	7	70	20	41,5	38,5	30	20	5	12	40	36	M6	63	8	15
HK 3001 A	30	MSA-E, LE	2000	15	90	22	50,5	46,5	39	22	8,5	12	42	42	M6	78	8	21,5
HK 3001 A-PHK 30-3	30	MSA-S, LS/TE, E, TS, S	2000	15	90	22	50,5	46,5	39	22	8,5	12/9	45/42	42/39	M6	78	8	21,5
HK 3501 A-PMK 35-10	35	MSA-S, LS	2000	15	100	24	50,5	46,5	39	24	7,5	13	55	45	M8	78	10	21,5
HK 3501 A-PMK 35-3	35	MSA-E, LE	2000	15	100	24	50,5	46,5	39	24	7,5	13	48	45	M8	78	10	21,5
HK 3501 A-PMK 35-4	35	MSB-LS, S	2000	15	100	24	50,5	46,5	39	24	7,5	12	48	44	M8	78	10	21,5
HK 4501 A	45	MSA-E, LE	2000	15	120	26	50,5	46,5	44	26	9	18	60	60	M10	78	14	26,5
HK 4501 A-PHK 45-10	45	MSA-S, LS	2000	15	120	26	50,5	46,5	44	26	9	18	70	60	M10	78	14	26,5

On www.aluflex.com you will find a link to our CAD- and PDF-files.

Pneumatic clamping element – MK

Function: Brakes when supplying air



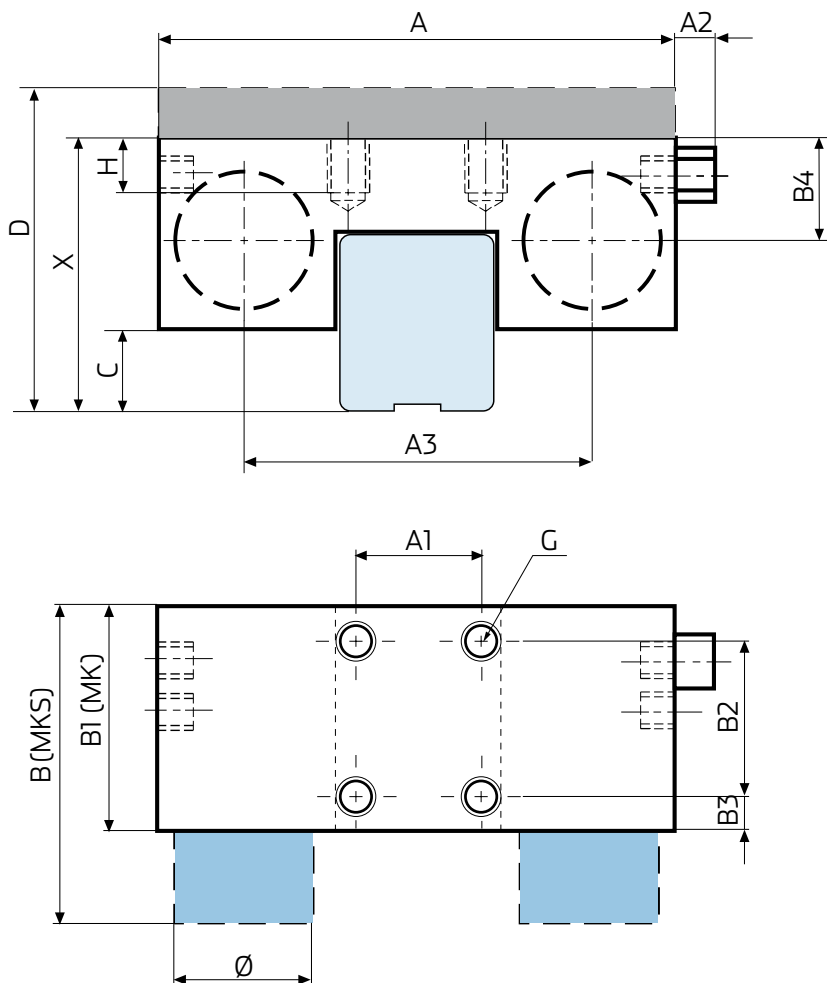
Pneumatic clamping element - MK

Model no.	Rail size	Rail and carriage type	Holding force (N)	A	A1	A2	A3	B1	B2	B3	B4	C	D	X	G	H	Ø
MK 1501 A	15	MSA-E, MSB-TE, E, TS, S	650	55	15	6	34	39	15	15,5	12	2,5	24	24	M4	4,5	16
MK 1501 A-PMK 15-4	15	MSA-S	650	55	15	6	34	39	15	15,5	12	2,5	28	24	M4	4,5	16
MK 2001 A	20	MSA-E, LE, S, MSA-LS/MSB-TE, E, TS, S	1000	66	20	6	43	39	20	5	14,4	4,5/2,5	30/28	30/28	M5	5	20
MK 2501 A	25	MSA-E, MSA-LE/MSB-TE, MSB-E, TS, S	1200	75	20	5	49	35	20	5	15,5	8/5	36/33	36/33	M6	8	22
MK 2501 A-PMK 25-4	25	MSA-S, LS	1200	75	20	5	49	35	20	5	15,5	8	40	36	M6	8	22
MK 3001 A	30	MSA-E, LE	1750	90	22	5	58	39	22	8,5	20,5	7	42	42	M8	10	25
MK 3001 A-PMK 30-2	30	MSB-TE, E, TS, S	1750	90	22	5	58	39	22	8,5	20,5	5	42	40	M8	10	25
MK 3001 A-PMK 30-3	30	MSA-S, LS	1750	90	22	5	58	39	22	8,5	20,5	7	45	42	M8	10	25
MK 3501 A-PMK 35-10	35	MSA-S, LS	2000	100	24	5	68	39	24	7,5	20,5	8,5	55	45	M8	10	28
MK 3501 A-PMK 35-3	35	MSA-E, LE	2000	100	24	5	68	39	24	7,5	20,5	8,5	48	45	M8	10	28
MK 3501 A-PMK 35-4	35	MSB-LS, S	2000	100	24	5	68	39	24	7,5	20,5	7,5	48	44	M8	10	28
MK 4501 A	45	MSA-E, LE	2250	120	26	5	78,8	49	26	11,5	26,8	16,5	60	60	M10	15	30
MK 4501 A-PMK 45-10	45	MSA-S, LS	2250	120	26	5	78,8	49	26	11,5	26,8	16,5	70	60	M10	15	30

On www.aluflex.com you will find a link to our CAD- and PDF-files.

Pneumatic clamping element – MKS

Funktion: Brakes when evacuating air, with a spring force.



Pneumatic clamping element - MKS

Model no.	Rail size	Rail and carriage type	Holding force (N)	A	A1	A2	A3	B	B1	B2	B3	B4	C	D	X	G	H	Ø
MKS 1501 A	15	MSA-E, MSB-TE, E, TS, S	400	55	15	6	34	58	39	15	15,5	12	2,5	24	24	M4	4,5	16
MKS 1501 A-PMK 15-4	15	MSA-S	400	55	15	6	34	58	39	15	15,5	12	2,5	28	24	M4	4,5	16
MKS 2001 A	20	MSA-E, LE, S, MSA-LS/MSB-TE, E, TS, S	600	66	20	6	43	61	39	20	5	14,4	4,5/2,5	30/28	30/28	M5	5	20
MKS 2501 A	25	MSA-E, MSA-LE/MSB-TE, E, TS, S	750	75	20	5	49	56	35	20	5	15,5	8/5	36/33	36/33	M6	8	22
MKS 2501 A-PMK 25-4	25	MSA-S, LS	750	75	20	5	49	56	35	20	5	15,5	8	40	36	M6	8	22
MKS 3001 A	30	MSA-E, LE	1050	90	22	5	58	68	39	22	8,5	20,5	7	42	42	M8	10	25
MKS 3001 A-PMK 30-2	30	MSB-TE, E, TS, S	1050	90	22	5	58	68	39	22	8,5	20,5	5	42	40	M8	10	25
MKS 3001 A-PMK 30-3	30	MSA-S, LS	1050	90	22	5	58	68	39	22	8,5	20,5	7	45	42	M8	10	25
MKS 3501 A-PMK 35-10	35	MSA-S, LS	1250	100	24	5	68	67	39	24	7,5	20,5	8,5	55	45	M8	10	28
MKS 3501 A-PMK 35-3	35	MSA-E, LE	1250	100	24	5	68	67	39	24	7,5	20,5	8,5	48	45	M8	10	28
MKS 3501 A-PMK 35-4	35	MSB-LS, S	1250	100	24	5	68	67	39	24	7,5	20,5	7,5	48	44	M8	10	28
MKS 4501 A	45	MSA-E, LE	1450	120	26	5	78,8	82	49	26	11,5	26,8	16,5	60	60	M10	15	30
MKS 4501 A-PMK 45-10	45	MSA-S, LS	1450	120	26	5	78,8	82	49	26	11,5	26,8	16,5	70	60	M10	15	30

AluFlex AB
Lilla Garnisonsgatan 34
254 67 Helsingborg
Tel +46 42 38 02 30
Fax +46 42 38 02 31
orders@aluflex.se
www.aluflex.se

LinearModul A/S
Sivlandvænget 13 B
5260 Odense S
Tel +45 65 91 72 10
Fax +45 65 91 72 20
orders@linearmodul.dk
www.linearmodul.dk

AluFlex System AS
Energivegen 14
Postboks 428
2051 Jessheim
Tlf +47 63 94 49 20
Faks +47 63 94 49 21
orders@aluflex.no
www.aluflex.no

item profiili oy
Mikkelänkalio 5
02771 Espoo
Puh +358 9 854 56 50
Fax +358 9 854 56 544
orders@itemprofiili.fi
www.itemprofiili.fi