

item

New Products 1/2026



item SETTINGS IN-/OUTPUTS DEVICE

Release Unit DIN/DOUT 24V

Basic Configuration

Operating mode Automatic Single-Actuator

Application preview 2 Release Units

Block signal Release signal

Validation of device quantity

item

ADD
YOUR
D
W
VISION



50
YEARS
IDEAS TO INNOVATIONS
item

This year, item is celebrating 50 years of pioneering spirit and innovation. Since 1976, our work has been rooted in technical innovation and a passion for solutions that are both functional and elegant.

The new products item is releasing in spring 2026 are further evidence of how this combination of continuity and innovation works to your benefit. They expand the possibilities of the item Building Kit System not just for mechanical engineering, but for robotics, clean production and smart signalling, too.

There is also a growing crossover between mechanical products and digital solutions. Configurable assemblies save you a lot of time and effort on researching

details and collect together all the components needed for an application in the item Online Shop and item Engineeringtool. Making modifications to doors, conveyor belts and work benches that are configured as single assemblies is as easy as adjusting the length of a single profile.

What's more, combined digital and mechanical solutions make your production smarter. The new Release Unit DIN/DOUT 24V allows you to separate and release containers on roller conveyors with precision. You can even choose between central and decentralised control and connect together multiple Release Units in a chain.

All that helps you translate your ideas into a finished application much faster. Your ideas are worth it.

The highlights at a glance



Smart products

- Release Unit DIN/DOOUT 24V
- Firmware update for LED Controller



Work Bench System

- Friction Joint 8 E
- Cup Holder 8 D60
- Trays as configurable assemblies



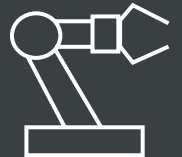
Linear technology

- Linear Units GSF and KGT
- Motor ST NEMA24 StarterKit



Lean Production Building Kit System

- Panel Holder D30
- Sprocket Wheel z32 D34.8-2



Robotics

- Robot Mounting Plates 8
- Transverse-Fastening Sets 8



Clean production

- Material Airlock X 8, Locking Mechanism
- Material Airlock X 8



MB Building Kit System

- Profile Coupling Set 8 K
- Hinge Zn ESD
- Swing doors as configurable assemblies



Drawer System

- Telescopic Rail Interlock Locking Set 8
- Assembly Set 8, Telescopic Rail heavy duty



Smart products

- Release Unit DIN/DOUT 24V
- Firmware update for LED Controller



Release Unit DIN/DOUT 24V

0.0.733.57

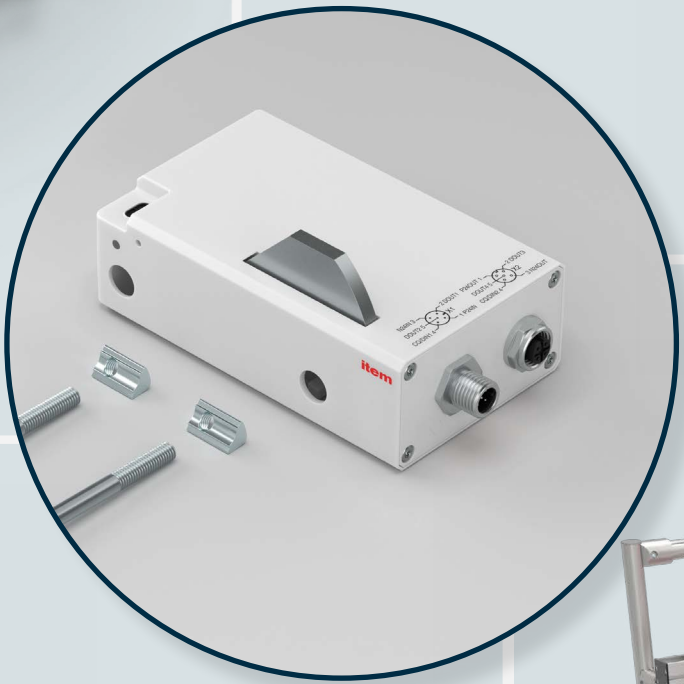
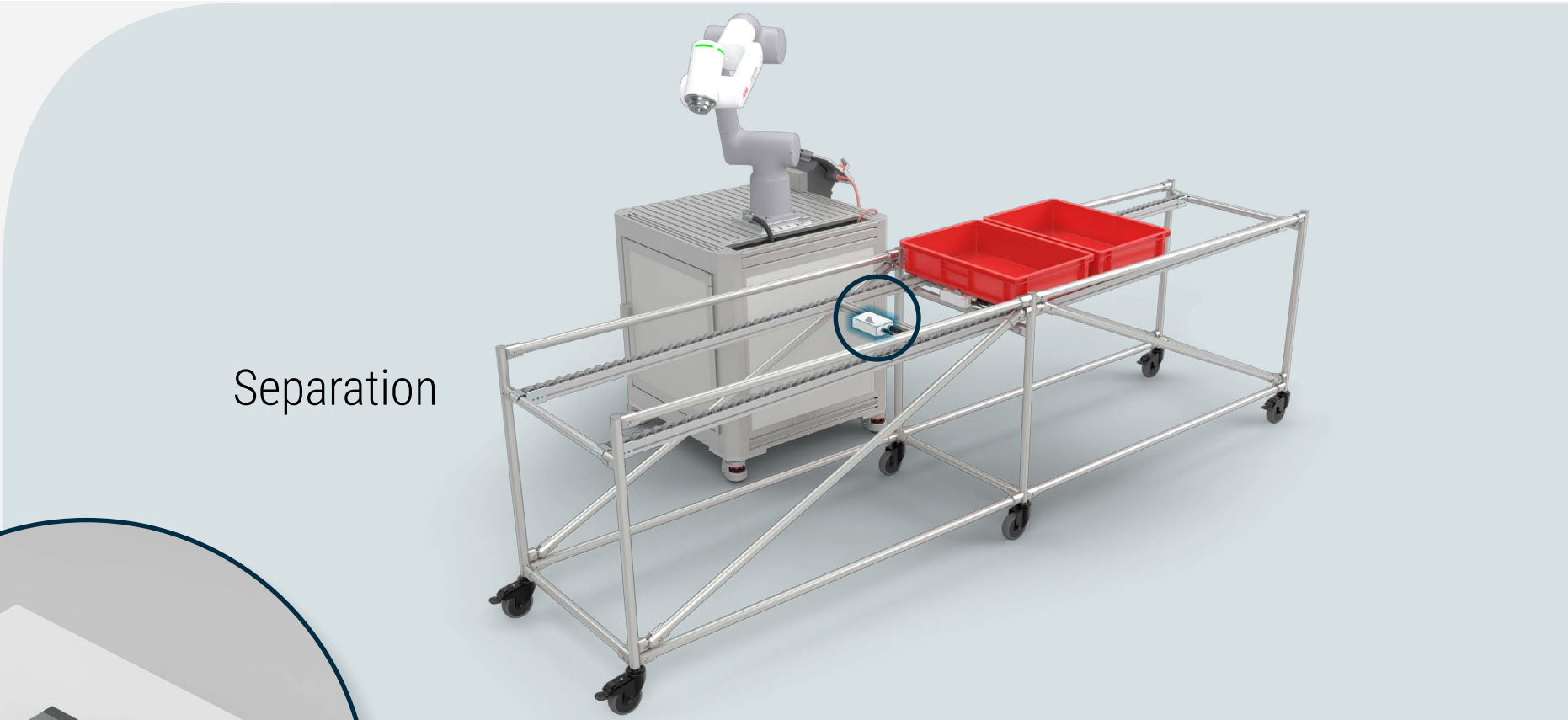
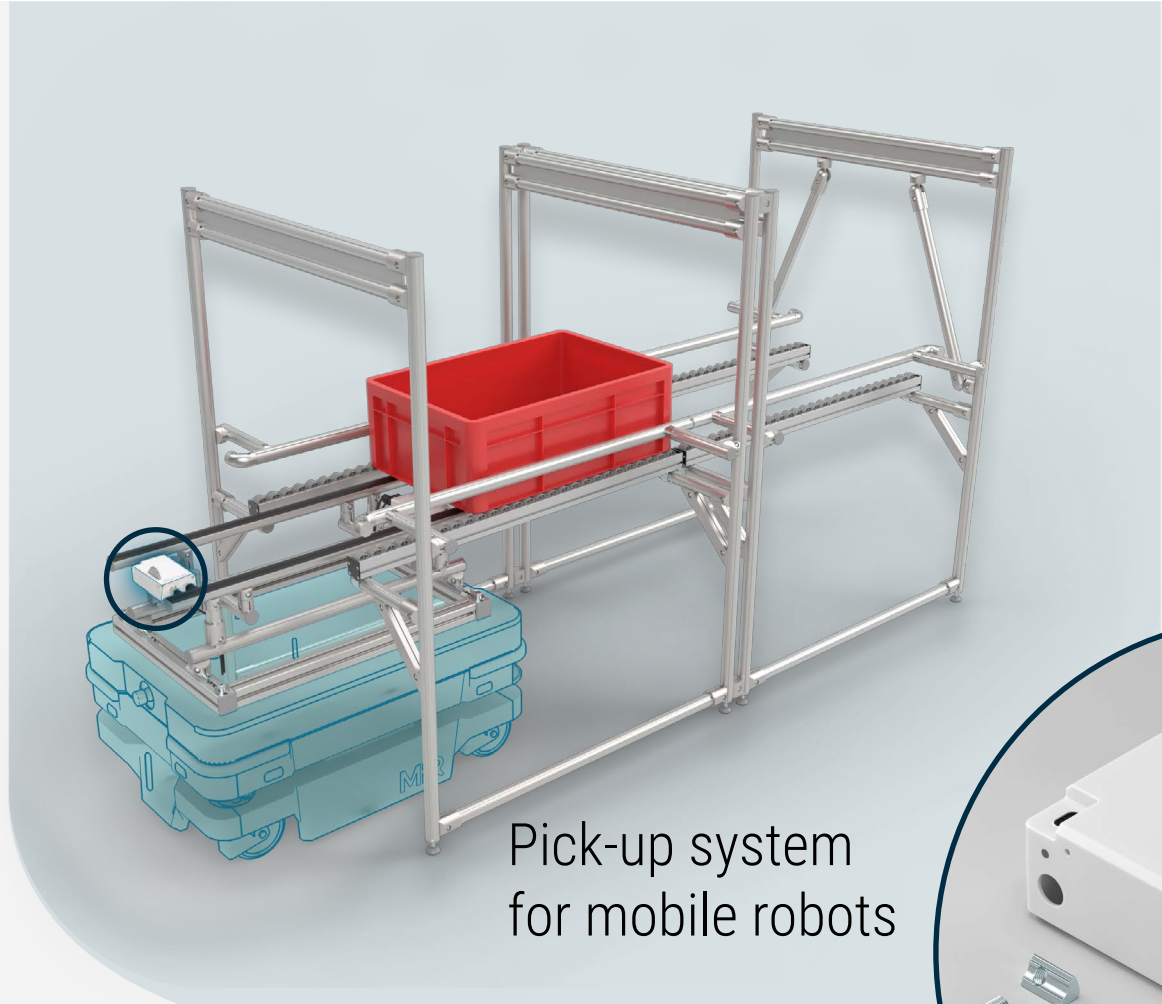
Intelligent material flow – with control

- Electromechanical separation and release of crates
- Bar, sensor technology and control logic in one unit
- The Release Unit can operate autonomously or in a chain

Electronic Release Unit DIN/DOUT 24V allows you to stop, separate and release small load carriers (SLCs) on roller conveyors with precision. That means you can build automated conveyor lines that incorporate the selective release of containers or smart interaction with SLC lifts. The product also supports efficient material flows with mobile and stationary robots.

Up to three Release Units can be operated together in a chain. Thanks to integrated control logic, they take care of release and separation processes in material supply operations independently.

The Release Unit combines three functions in one compact housing – an electrically operated bar, sensor technology and logic processing. The bar ensures that SLCs with stacking edges can be held securely in place or released for onward travel. The optical sensor identifies whether the container has left the waiting zone and detects any faults in the process.



Release Unit DIN/DOUT 24V

Release Unit DIN/DOUT 24V is an intelligent, electromechanical solution for controlling material flow. An electrically operated bar stops SLCs on a roller conveyor and releases them again with precision. Thanks to integrated sensor technology and controls, each unit can operate independently or in a chain. The Release Unit monitors the release process, using an optical sensor to check whether the handover/release process has been successfully completed or disrupted in some way.

Three Release Units can be chained to implement automated separation processes that reduce back pressure. No external control system is required, but one can be used if desired.

The Release Unit monitors the process and can bring it to a halt if errors occur. This enhances process reliability. The process itself is configured via an intuitive web interface.



Release Unit DIN/DOUT 24V 0.0.733.57

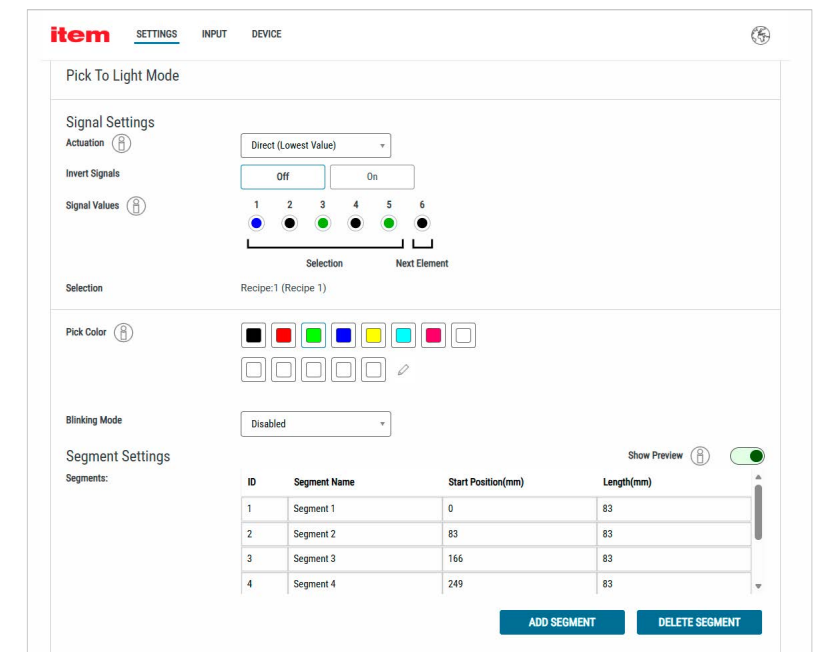
- Intelligent electromechanical separation of SLCs
- Bar, sensor technology and digital processing in one unit

Pick-by-light applications with the item LED Strip Controller

This free firmware update gives Multi-Segment RGB LED Strip Controller DIN/AIN 24VDC an additional operating mode. Pick-by-light solutions help workers find storage locations in racks and on assembly work benches faster. Using segments of LED Strips to highlight specific storage locations ensures staff can see at a glance where to pick from next.

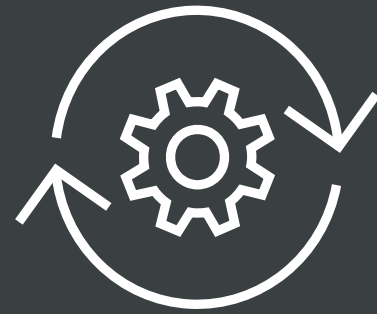
The compact Controller developed by item also offers “Countdown”, “Fill level”, “Segment display” and “Highlight” modes.

The update is available in the “Downloads” section of the product page for Multi-Segment RGB LED Strip Controller DIN/AIN 24VDC ([0.0.724.14](#)) in the item Online Shop. The firmware is installed via the “Device” menu in the web interface.



Firmware Update, LED Strip Controller DIN/AIN

- Additional operating mode for pick-by-light applications
- Software update for Multi-Segment RGB LED Strip Controller DIN/AIN 24VDC



Linear technology

- Linear Units GSF and KGT
- Motor ST NEMA24 StarterKit

Linear Unit GSF 6 60
0.0.734.55

Linear Unit KGT 6 60 P10
0.0.734.56

Motor ST NEMA24 StarterKit
0.0.733.25

More power and speed for linear technology

- Bigger selection of ready-to-install Linear Units with a spindle drive
- Option of exceptionally long axes on linear axes with a spindle drive
- StarterKit makes it easy to use a NEMA stepper motor

Compact, precise, ready to install – item Linear Units with a spindle drive enable maximum precision and powerful feed. Three new variants are expanding the range of applications even further.

The increased spindle lead of 12 mm per revolution enables Linear Unit GSF 6 60 TR 12x12 to achieve a faster speed at high feed force compared to established variants. By contrast, thanks to their reduced feed constant of 5 or 10 mm per revolution, Linear Units KGT 6 60 P5 and KGT 6 60 P10 with a robust ball screw drive gain additional feed force even when combined with smaller motors that generate less drive torque.

Both linear axes are ideal for small installation spaces due to their compact dimensions. All the moving components under the carriage have a dust-tight covering that protects the high-precision mechanics from environmental influences. Linear Units with a spindle drive are the perfect complement for stepper motors such as Integrated Motor ST NEMA24.

The new Motor ST NEMA24 StarterKit helps ensure plug-and-play applications can be assembled faster because all the necessary components are supplied ready to install and perfectly coordinated with each other.

In detail – Linear Units GSF and KGT

item Linear Unit GSF 6 60 TR 12x12 combines low-friction sliding guidance with a spindle drive that features a trapezoidal thread inside a housing. The integrated spindle supports enable long travel distances of up to 2800 mm at a high spindle speed. This compact Linear Unit is ideal for applications where space is tight.

Together with its increased spindle lead of 12 mm per revolution, the Linear Unit achieves a high feed speed without compromising on precision. This addition to the portfolio means you can select the right combination for your application.

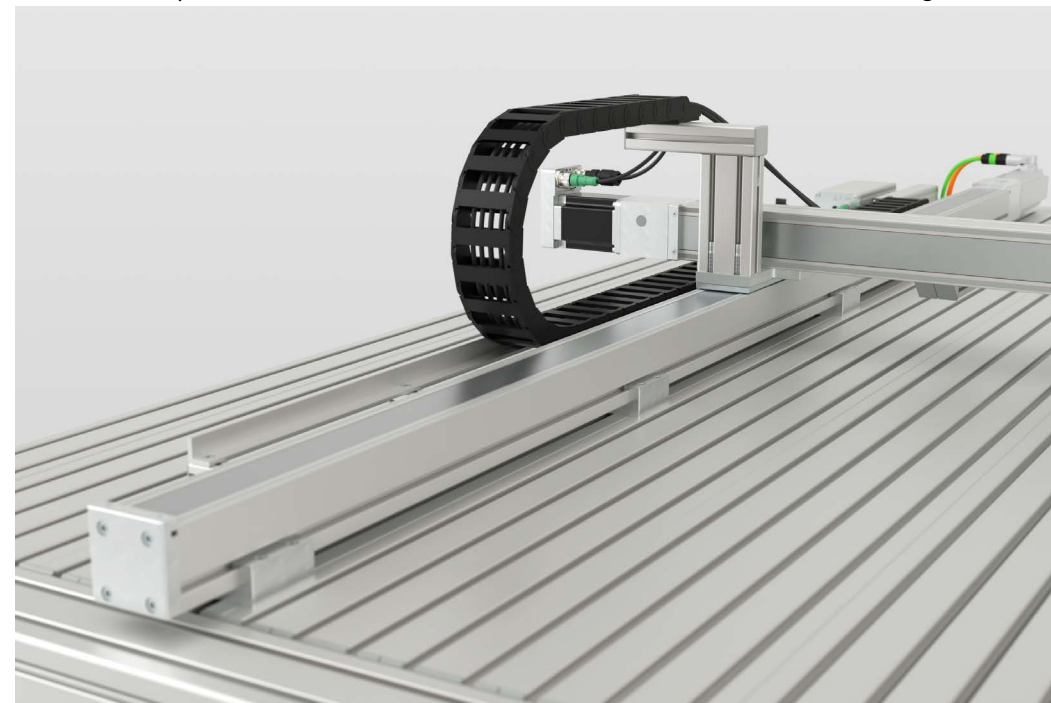


Linear Unit GSF 6 60 TR 12x12
[0.0.734.55](#)

- Encapsulated Linear Unit with trapezoidal thread
- 12-mm spindle lead for higher speed

Linear Units KGT 6 60 P5 and KGT 6 60 P10 offer a ball screw drive with a travel distance of up to 2600 mm and a robust carriage in the smallest of spaces. The spindle, which has waisted sections at each end, and the travelling spindle supports keep everything running smoothly and precisely without sacrificing dynamics. The spindle leads of 5 and 10 mm give the Linear Units a lot of power per revolution even when the drive torque is low.

The carriage runs on two recirculating ball units that exhibit minimal reversal play during a change of direction. This makes the linear axis and its powerful spindle drive perfect for moving workpieces and tools with precision. You can now choose from a wider range of hardware combinations.



Linear Unit KGT 6 60 P5
[0.0.735.20](#)

- Encapsulated Linear Unit with a ball screw drive
- 5-mm lead for very high, precise power transmission

Variant:
Linear Unit KGT 6 60 P10
[0.0.734.56](#)

Overview of spindle axes	Maximum operating load/feed force [N]	Maximum travelling speed [mm/s]
Linear Unit KGT 6 60 P5	680	250
Linear Unit KGT 6 60 P10	850	500
Linear Unit KGT 6 60 P20	1000	1000
Linear Unit GSF 6 60 TR 12x3	250	30
Linear Unit GSF 6 60 TR 12x12	250	120



Use item MotionDesigner®

item MotionDesigner® simplifies the process of selecting and configuring your linear technology solution. Based on your requirements, the online software calculates the appropriate combination of Linear Unit, motor and controller that best suits your transport task – all in a matter of seconds. That gives you more certainty in your planning and saves you having to compare countless components manually.



Motor ST NEMA24 StarterKit

The rapid route to a complete linear technology solution. Motor ST NEMA24 StarterKit can be used to create plug-and-play applications when combined with Integrated Motor ST NEMA24 -310-48-T1 (0.0.703.45) because it provides all the necessary components ready to install and perfectly coordinated with each other.

The stepper motor features an integrated controller and a compact design with high torque and precise control over the motor shaft. The StarterKit contains a DC-DC converter 48V/24V that supplies both 24 Volts for the integrated controller and 48 Volts for the motor, meaning that only one power supply unit is needed for operation.

Since high voltages are not involved and the installation process is not complicated, there is no need for an electrician to make the electrical connection with the motor and controller. The components are also securely enclosed, which means you don't need a separate enclosure.



Motor ST NEMA24 StarterKit
0.0.733.25

- All the components needed to connect up a Motor ST NEMA24
- Includes an enable switch to start up and shut down the motor safely



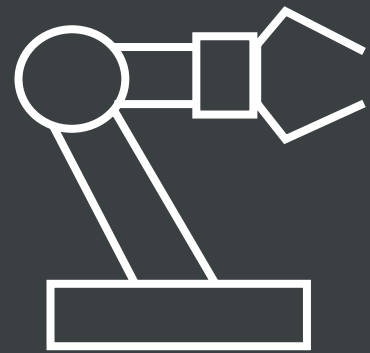
Power Supply 48V 4.6A with connecting cable
0.0.734.62

- 48 V power supply unit for Motor ST NEMA24
- Resistant to feedback voltage when the motor is moved manually



DC-DC Converter 48V/24V
0.0.732.56

- Converts 48 V input to a 24 V and 48 V output
- Only one power supply unit needed for NEMA24 motors



Robotics

- Robot Mounting Plates 8
- Transverse-Fastening Sets 8

Transverse-Fastening Set 8, right
0.0.731.62

Transverse-Fastening Set 8 with Clamp Lever, right
0.0.731.64

A secure hold for robotics solutions

- Fast, easy-to-install fastening technology for Line 8 profiles that cross
- Precise, wear-free profile positioning
- Carefully configured Mounting Plates with hole patterns for additional robot models

Secure fixing and rapid adjustment – the new item Transverse-Fastening Sets 8 hold in place Line 8 profiles that cross each other at a 90° angle without requiring any machining. The special fastener attaches to Line 8 grooves on the two profiles to create a doubly torsion-resistant connection.

The screws can be loosened individually to allow users to align the profiles separately. Variants with clamp levers are ideal for applications where adjustments need to be made on a frequent basis, for instance when bespoke end-of-arm tooling is being used with workpieces that are changed on a frequent basis.

Two new Robot Mounting Plates are also available, thereby expanding the range of robot models that can be fitted to frames even further. The predrilled hole pattern ensures that robots from Mitsubishi and Universal Robots as well as the larger cobot models from Doosan and Fanuc can be fixed in place with ease.

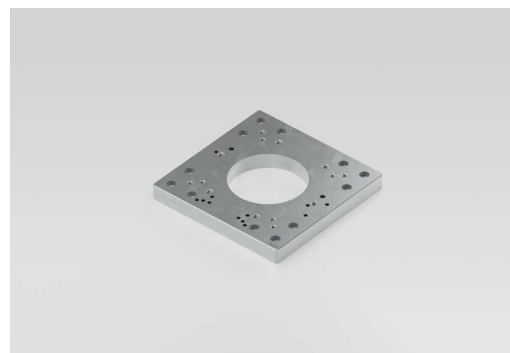
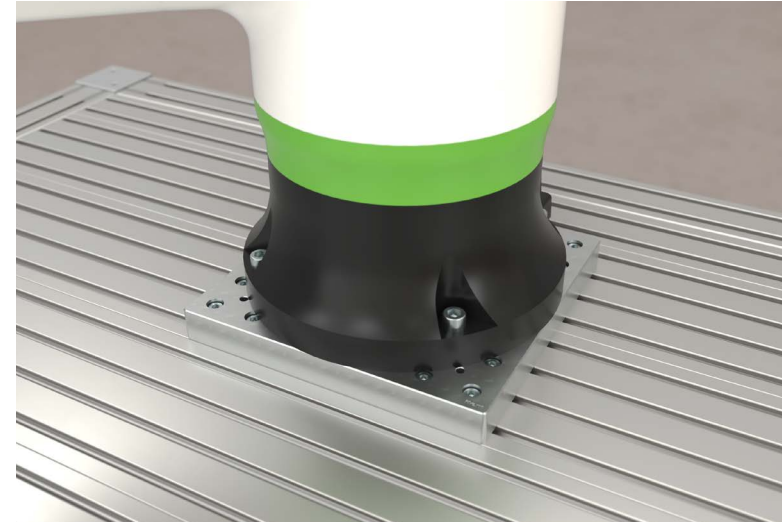
Robot Mounting Plate 8 280x280 T1
0.0.732.95



In detail – the new item Robot Mounting Plates

item Robot Mounting Plates 8 are the ideal solution for integrating robots into your working environment. To ensure a sound connection to profiles and frames, the high-strength aluminium plates come with predrilled hole patterns for popular robot models. This ensures robot arms can be mounted quickly and securely to work benches and frames.

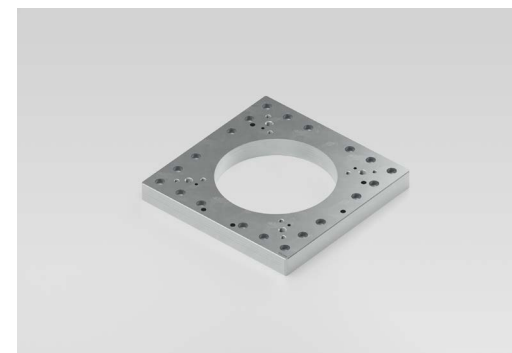
The new Robot Mounting Plate 8 240x240 and Robot Mounting Plate 8 280x280 T1 are compatible with cobots and lightweight robots from Mitsubishi and Universal Robots as well as the larger cobot models from Doosan and Fanuc.



**Robot Mounting Plate 8
240x240**

[0.0.732.94](#)

- Compatible with robots from Universal Robots and Mitsubishi
- Predrilled holes for rapid fixing



**Robot Mounting Plate 8
280x280 T1**

[0.0.732.95](#)

- Designed for larger robots from Doosan and Fanuc
- Predrilled holes for rapid fixing



Overview – the right Robot Mounting Plate for your model

Robot Mounting Plate	Art. No.	ABB	Doosan	Fanuc	Kassow	KUKA	Mitsubishi	Omron	UR
	8 160x160	0.0.709.26	–	–	CRX-5iA	–	–	–	UR3e UR5e UR7e
	8 200x200	0.0.709.31	–	–	CRX-10iA CRX-10iA/L CRX-20iA/L	–	–	TM5 TM12 TM14 TM16 TM20	UR10e UR12e UR16e
	8 200x200 T1	0.0.719.07	–	A series M series	–	KR810 KR1018 KR1205 KR1410 KR1805	–	–	–
	8 240x200	0.0.715.06	CRB 1100 CRB 15000-5 IRB 14050	–	–	–	–	–	–
NEW	8 240x240	0.0.732.94	–	–	–	–	RV-2 RV-4 RV-5 RV-8	–	UR8L UR15 UR18
	8 280x200	0.0.721.89	CRB 15000-10 CRB 15000-12 IRB 920	–	–	–	–	–	–
	8 280x280	0.0.709.45	–	–	–	–	LBR iiwa series LBR iisy series	–	UR20 UR30
NEW	8 280x280 T1	0.0.732.95	–	H series P series	CRX-25iA CRX-30iA	–	–	RV-7	–

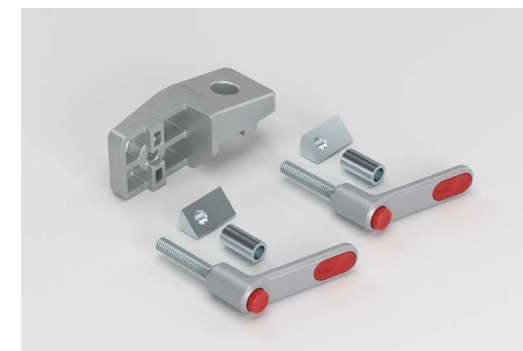
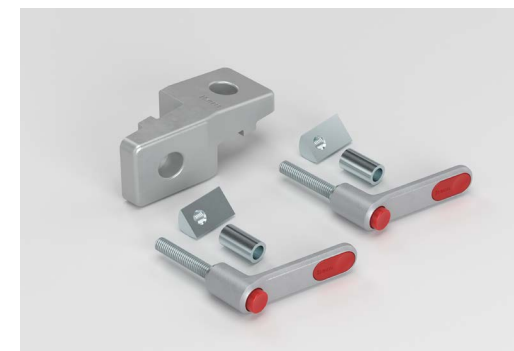
In detail – the new Transverse Fasteners 8

You can use the new Transverse Fastening Sets 8 to install two Line 8 profiles that cross each other at a 90° angle. The “right” and “left” versions of the sets give you the option to choose which profile grooves to use to create the torsion-resistant fastening.

Transverse Fasteners 8 from item make it easier to position both profiles precisely. The screws can be loosened separately, allowing you to align one profile while leaving the other firmly connected. The fasteners also keep the two profiles apart so they don’t come into contact with each other while being adjusted and therefore won’t get scratched.

Transverse Fastening Sets with Clamp Levers are also available for making connections that can be released quickly. The clamp levers enable the tool-free adjustment of struts in frames.

Transverse Fasteners 8 are perfect for end-of-arm tooling (EOAT). The fasteners make it easy to fit fixtures such as grippers to robot arms and make wear-free adjustments to them.



Transverse-Fastening Set 8, right

[0.0.731.62](#)

- For profiles that cross at a 90° angle
- Hexagon Socket Head Cap Screws for a secure hold

Transverse Fastening Set 8, left

[0.0.731.63](#)

- For profiles that cross at a 90° angle
- Hexagon Socket Head Cap Screws for a secure hold

Transverse-Fastening Set 8 with Clamp Lever, right

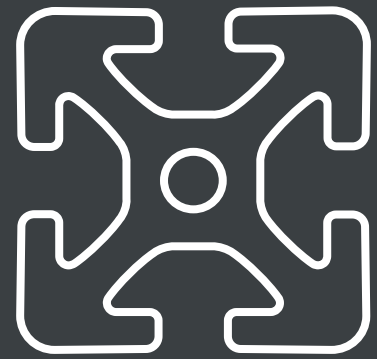
[0.0.731.64](#)

- For profiles that cross at a 90° angle
- Two clamp levers for adjustment purposes

Transverse Fastening Set 8 with Clamp Lever, left

[0.0.731.65](#)

- For profiles that cross at a 90° angle
- Two clamp levers for adjustment purposes



MB Building Kit System

- Profile Coupling Set 8 K
- Hinge Zn ESD
- Swing doors as configurable assemblies

Profile Coupling Set 8 K

0.0.731.80

Partition Foot Set 8 400x4

0.0.732.46

Build and reconfigure partitions as required

- Rapid, tool-free construction of partitions
- Invisible, gap-free profile connection
- Flat foot plate ensures stability

New Profile Coupling Set 8 K is used to connect together individual partition elements to create a seamless wall – all in a matter of seconds. That means you can build partitions to function as simple screening or to separate off production areas in next to no time.

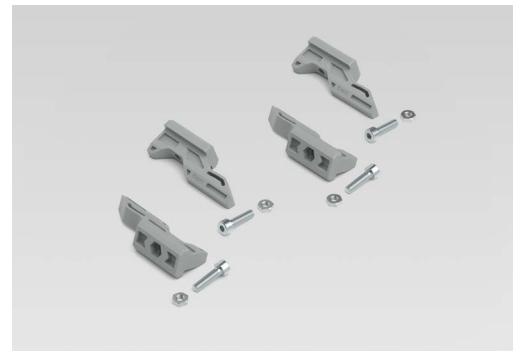
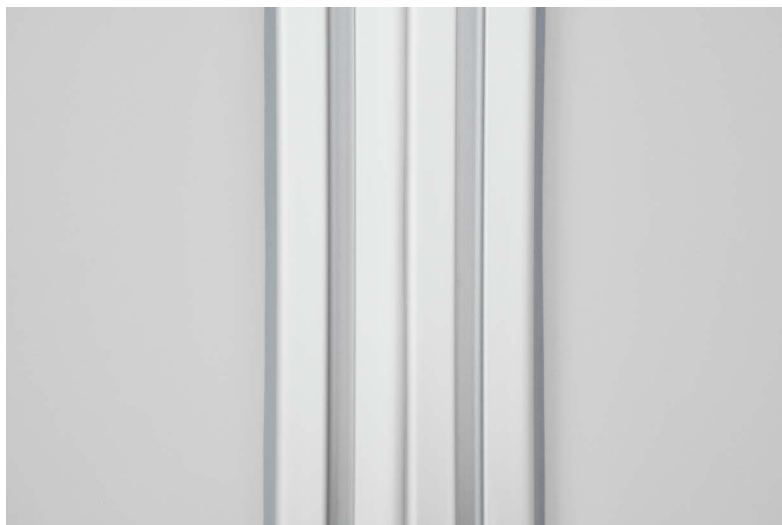
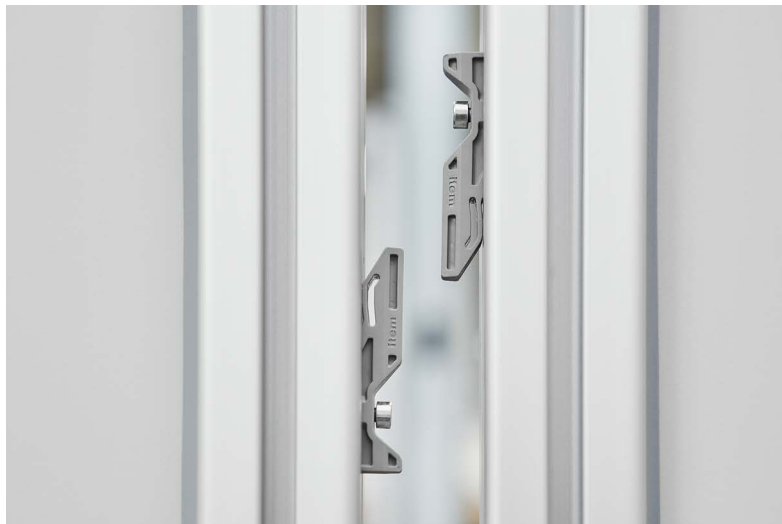
Posts are connected together and taken apart again without requiring any tools. As a result, any panel can be free standing or combined with others. The new trapezoidal Partition Foot Set 8 400x4 supports flexible construction techniques. Measuring 4 mm in height, this flat foot plate provides excellent stability. Thanks to its trapezoidal shape, two feet can be placed directly next to each other.

Tip: When working with the new item Partition 8 as a configurable assembly, you can create bespoke partitions as a turnkey solution in the size and shape you need.

Profile Coupling Set 8 K

When using Profile Coupling Set 8 K, two profile coupling elements clip into each other. The elements are fastened to the profile grooves that face each other on the two profiles being connected. To make the connection, one of the profiles is slotted onto the other from above. This connects the profiles without leaving a gap between them, which means the partition resists being pushed apart. The connection is released by lifting one panel up.

The Profile Coupling Set contains four profile coupling elements. It is ideal for connecting together the posts of partitions, but can also be used for other purposes such as temporary dividers built from profiles.



Profile Coupling Set 8 K

0.0.731.80

- Connects parallel profiles and posts
- Clips together and comes apart without needing tools

Partition Foot Set 8 400x4

Trapezoidal Partition Foot Set 8 400x4 helps you set up mobile partitions or notice boards either as standalone elements or interlinked structures. Both vertical and horizontal Line 8 profiles can be fastened to this 4-mm-high foot. A thread in the core bore of a Line 8 profile is all you need to fasten the profile to the Partition Foot Set. Two Partition Foot Sets will provide a stable base for elements up to 2000 mm in height. Thanks to the shape of the foot, several partition elements can also be set up directly adjacent to each other with the Partition Foot Set. The long edge of the foot fits flush with the outer edge of a Profile 8 40x40.



Partition Foot Set 8 400x4

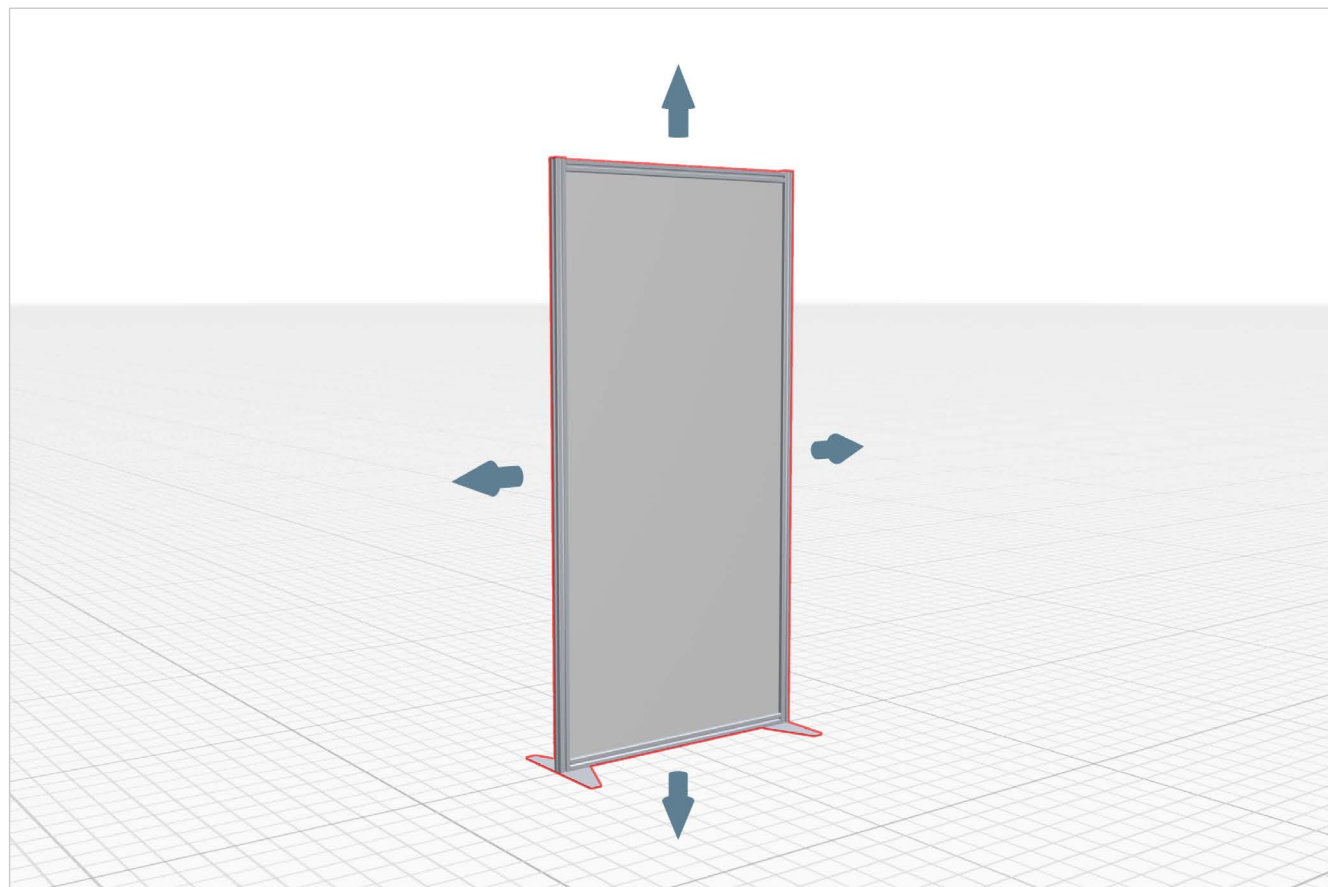
0.0.732.46

- For stable, freestanding partitions made of Line 8 profiles
- Adjacent walls can be arranged seamlessly

Configure partitions with ease

As a configurable assembly, the item Partition makes it quick and easy to put together partition walls that can be connected to additional partition and divider elements as required using the Profile Coupling Set.

Partitions can be configured in the item Online Shop and combined to create entire walls in the item Engineeringtool. Configured partition elements are delivered assembled.



Partition 8 Vario, Partition Section

Configurable assembly

- Dimensions and design freely configurable
- Simple side-by-side connection using the Profile Coupling Set

Perfect results with configurable assemblies

Configurable assemblies from item do much more than formula-based configurators. They incorporate a complete set of rules that factors in product characteristics and interdependencies between components. Like an experienced engineer, a configurable assembly understands the capabilities and internal interplay of a functional group.

You benefit from this in a variety of ways:

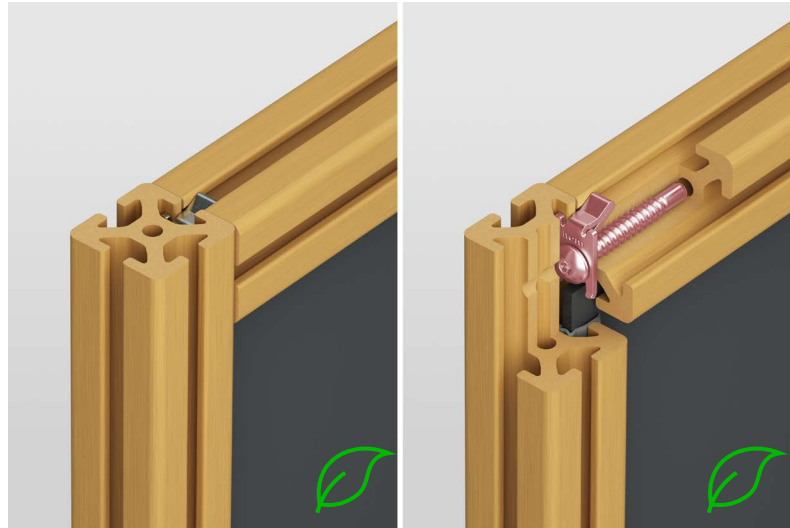
- 1 High planning certainty** without having to research intricate details, because coordinated components are appropriately calculated, combined and extended. All necessary components are taken into account in the correct quantity and design.
- 2 Suitability for use in complete projects** because, when working in the item Engineeringtool, configurable assemblies can be integrated directly into complex constructions and can be dynamically adapted.
- 3 Accelerated planning**, thanks to immediate results, direct price indications and 3D representations. Most assemblies can be ordered preassembled.

Whether partitions, doors or conveyor belts – you can focus on your project and complete it faster with configurable assemblies. New configurable assemblies are being added all the time to the item Online Shop and item Engineeringtool.



Standard-Fastening Set KH 8, one-sided

Standard-Fastening Set KH 8, one-sided is used to assemble profile frames made of Profiles WFC 8 or Profiles KH 8 in a way that ensures panel elements can be inserted with ease. Thanks to its asymmetrical anti-torsion feature, one groove is left free. What's more, Caps can also be fitted flush when the profiles are offset slightly.



Standard-Fastening Set KH 8, one-sided
0.0.706.07

- Leaves one groove free for panel elements
- Caps can be fitted flush

Cap WFC 8

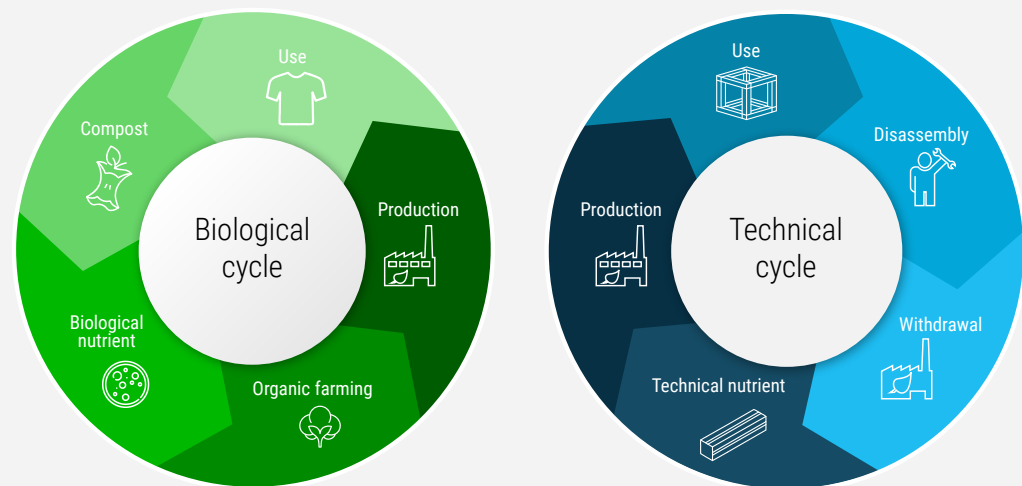
When building with Profiles WFC 8, using matching Caps WFC 8 further enhances the look of your construction. Covering over the end faces makes constructions easier to clean and stops dust getting into the central openings in these sustainable profiles. Made of cradle-to-cradle material, the Cap is simply tapped into place with a mallet.



Cap WFC 8 40x40
0.0.732.01

- Compatible with Profiles WFC 8 40x40
- Clean covering for end faces

Variant:
Cap WFC 8 80x40
0.0.732.02



What does Cradle to Cradle mean?



Cradle to Cradle (C2C) is the concept of manufacturing products within a closed material loop that incorporates all raw materials from production right through to end of use. Cradle to Cradle Products Innovation Institute B.V. will only certify a product when it is sustainable over its entire lifecycle and when its starting materials can be reused to manufacture new products.

Profiles WFC 8 from item are based on a certified material from Novotech that boasts a gold certificate.



In detail – ESD-safe Hinges

New Hinges 8 Zn ESD from item are ideal for fastening doors and hatches. They are equally suitable for use with lightweight doors made of Line 6 profiles and robust machine doors made of Line 8 profiles. When using the correct Hinge variant, you can even build your door and frame from a mix of the product lines.

The Hinges can be used on the left and right, have an anti-torsion feature and are ESD safe. They can be fastened to a groove, to the core bore at the profile end face or directly to a panel element, as required.



Hinge 8/8 40 Zn ESD

0.0.728.19

- For a door and frame made of Line 8 profiles
- ESD-safe, robust Hinge



Hinge 6/8 40 Zn ESD

0.0.728.28

- For a door made of Line 6 profiles and frame made of Line 8 profiles
- ESD-safe, robust Hinge



Hinge 6/6 40 Zn ESD

0.0.728.29

- For a door and frame made of Line 6 profiles
- ESD-safe, robust Hinge

End Cap 8

New End Cap 8 40 H60 ESD is a raised end piece for Line 8 profiles. When a profile is being used to hang something on, or as part of a cantilever rack, fitting the End Cap in place ensures that cable harnesses, rods and profiles won't slide off the end. Rounded edges ensure products aren't damaged as they are taken down from the profile and also prevent injury hazards. The End Cap is ESD safe.



End Cap 8 40 H60 ESD

[0.0.733.23](#)

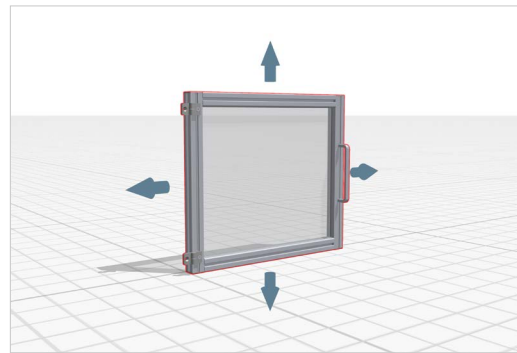
- Raised end piece for Line 8 profiles
- Prevents products slipping off the end of a profile



Design and build faster with ready-to-install swing doors

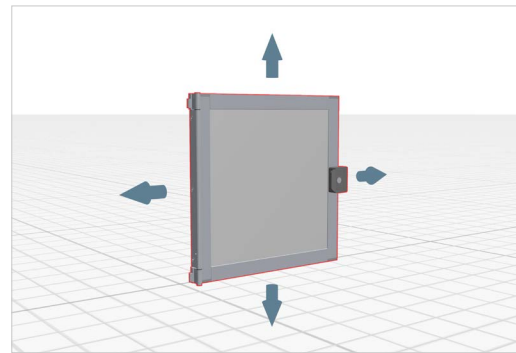
Perfect results without time-consuming research! Preconfigured swing doors massively speed up the construction of machine cabins, racks and other applications. When working in the item Engineeringtool, your door is automatically adjusted to fit its intended opening. Simply select the door you want, place it in the relevant location in your construction, specify a few details and that's it – job done! Alternatively, you can order your custom swing door in the item Online Shop. The configurable assemblies help you put together the perfect door in seconds.

The profiles of the swing door can be selected from the wide-ranging item portfolio – including Line XMS profiles and Clamp Profiles. You have full control over all the details. That means you decide which panel infill is used, what type of panel fastening is implemented, which handles are fitted and the type and positioning of the hinges. You can select which side the door will open from, too. You can also choose whether a door seal is to be integrated into the outer frame around the door.



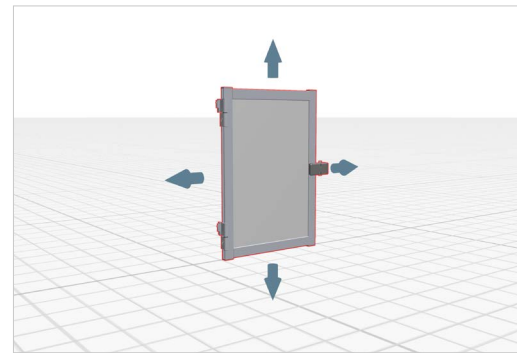
Swing Door 8 40x40
Configurable assembly

- Based on Line 8 item profiles
- For bespoke doors in the modular dimension of Line 8



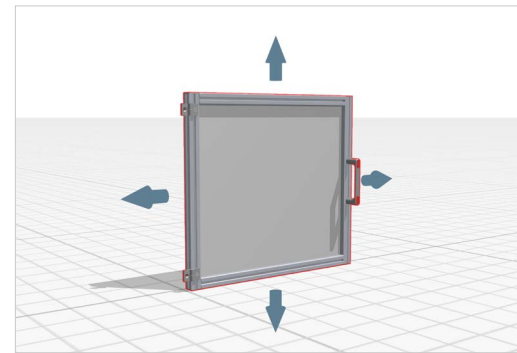
Swing Door X 8 40x40
Configurable assembly

- Based on Line X 8 item profiles
- For bespoke doors with unbroke surfaces



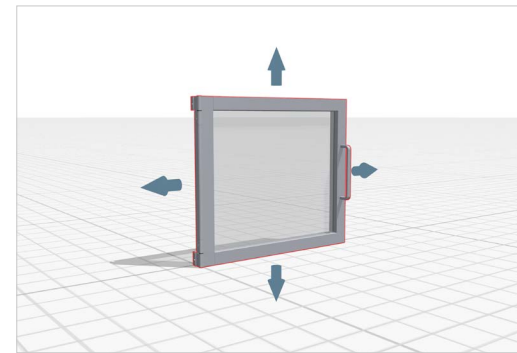
Swing Door 8 32x18
Configurable assembly

- Based on item Clamp Profiles 8 32x18
- For flat, lightweight doors



Swing Door 6 30x30
Configurable assembly

- Based on Line 6 item profiles
- For weight-optimised doors and hatches



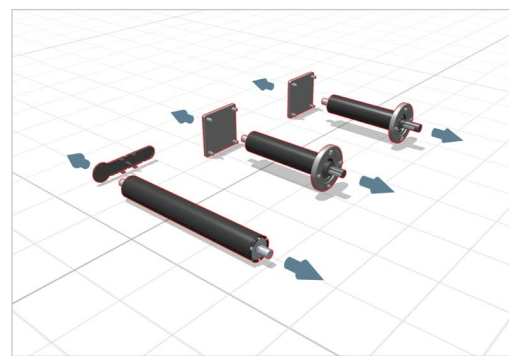
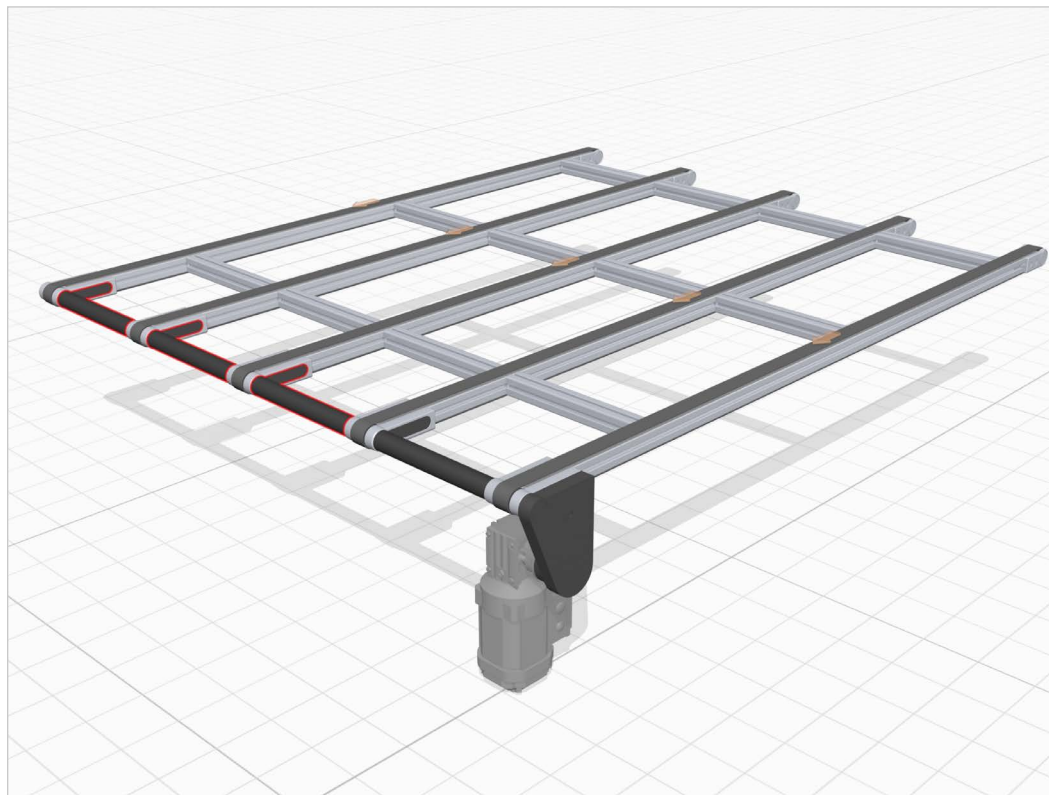
Swing Door X 8 40x40 – XMS
Configurable assembly

- Based on Profiles 8 XMS
- For machine cabins and enclosures from the XMS system

Using multiple conveyor belts together

Multiple conveyors are ideal for safely moving wide goods such as cardboard and panel-like components that are not inherently stable from A to B. Wide or irregularly shaped products can be laid across up to six belts that are driven in sync by one motor.

When using Synchroniser Shaft Set 8 40 as a configurable assembly, you can connect together several individual conveyors to create one complete solution. The spacings between the individual conveyor belts can be custom-selected in the item Engineeringtool. The assembly enables precise planning and ensures the system is perfectly configured in terms of its length. The item Engineeringtool also provides complete documentation for the multiple conveyor.



Synchroniser Shaft Set 8 40 Configurable assembly

- Can be used to build multiple conveyors with up to six parallel conveyor lines
- Spacing between the conveyor belts can be set as required



Drawer System

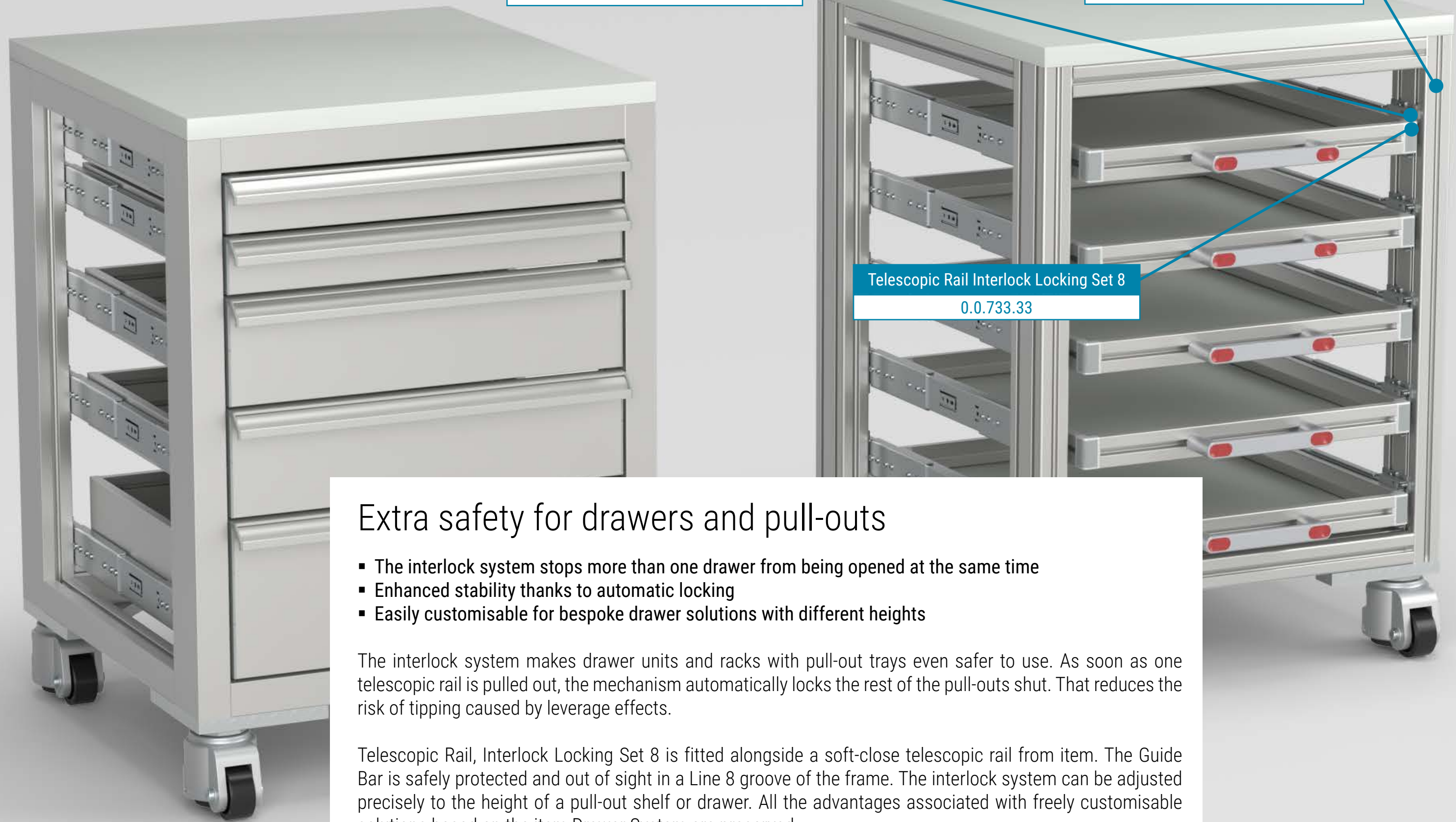
- Telescopic Rail Interlock Locking Set 8
- Assembly Set 8, Telescopic Rail heavy duty



Telescopic Rail Interlock Fastening Set 8
0.0.735.21

Telescopic Rail Interlock Guide Bar D4
0.0.733.18

Telescopic Rail Interlock Locking Set 8
0.0.733.33



Extra safety for drawers and pull-outs

- The interlock system stops more than one drawer from being opened at the same time
- Enhanced stability thanks to automatic locking
- Easily customisable for bespoke drawer solutions with different heights

The interlock system makes drawer units and racks with pull-out trays even safer to use. As soon as one telescopic rail is pulled out, the mechanism automatically locks the rest of the pull-outs shut. That reduces the risk of tipping caused by leverage effects.

Telescopic Rail, Interlock Locking Set 8 is fitted alongside a soft-close telescopic rail from item. The Guide Bar is safely protected and out of sight in a Line 8 groove of the frame. The interlock system can be adjusted precisely to the height of a pull-out shelf or drawer. All the advantages associated with freely customisable solutions based on the item Drawer System are preserved.

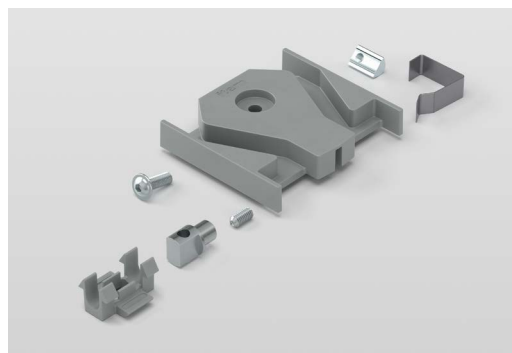
In detail – the interlock system

The item interlock system is based on a Guide Bar that connects together multiple Locking Sets. The locking clips of these sets are positioned at the relevant heights along the Guide Bar, which means that drawers of all sizes and combinations can be secured. The Guide Bar sits safely protected in a free vertical Line 8 groove on the profile frame.

When one telescopic rail is pulled out, the mechanism automatically locks all the others to make the cabinet less likely to tip. All the other drawers or pull-outs are held shut until the telescopic rail that has been pulled out is pushed all the way back in.

The locking element is fastened to the Line 5 groove on a Frame Profile from the Drawer System. When working with trays or drawers that have a Line 8 groove, Telescopic Rail Interlock Fastening Set 8 (0.0.735.21) is required. Interlock Locking Set 8 is suitable for use with soft-close telescopic rails from item.

Also new: Assembly Set 8, Telescopic Rail heavy duty 19.1x53.1 contains all the components needed to fit heavy-duty telescopic rails with over-extension to a profile frame.



Telescopic Rail Interlock Locking Set 8

0.0.733.33

- Clip-in locking mechanism for telescopic rails
- Contains locking element and locking clip

Telescopic Rail Interlock Guide Bar D4

0.0.733.18

- Links together Locking Sets
- Runs safely within a Line 8 groove

Telescopic Rail Interlock Fastening Set 8

0.0.735.21

- Adapter for Line 8 groove
- For building customised pull-outs

Assembly Set 8, Telescopic Rail heavy duty 19.1x53.1

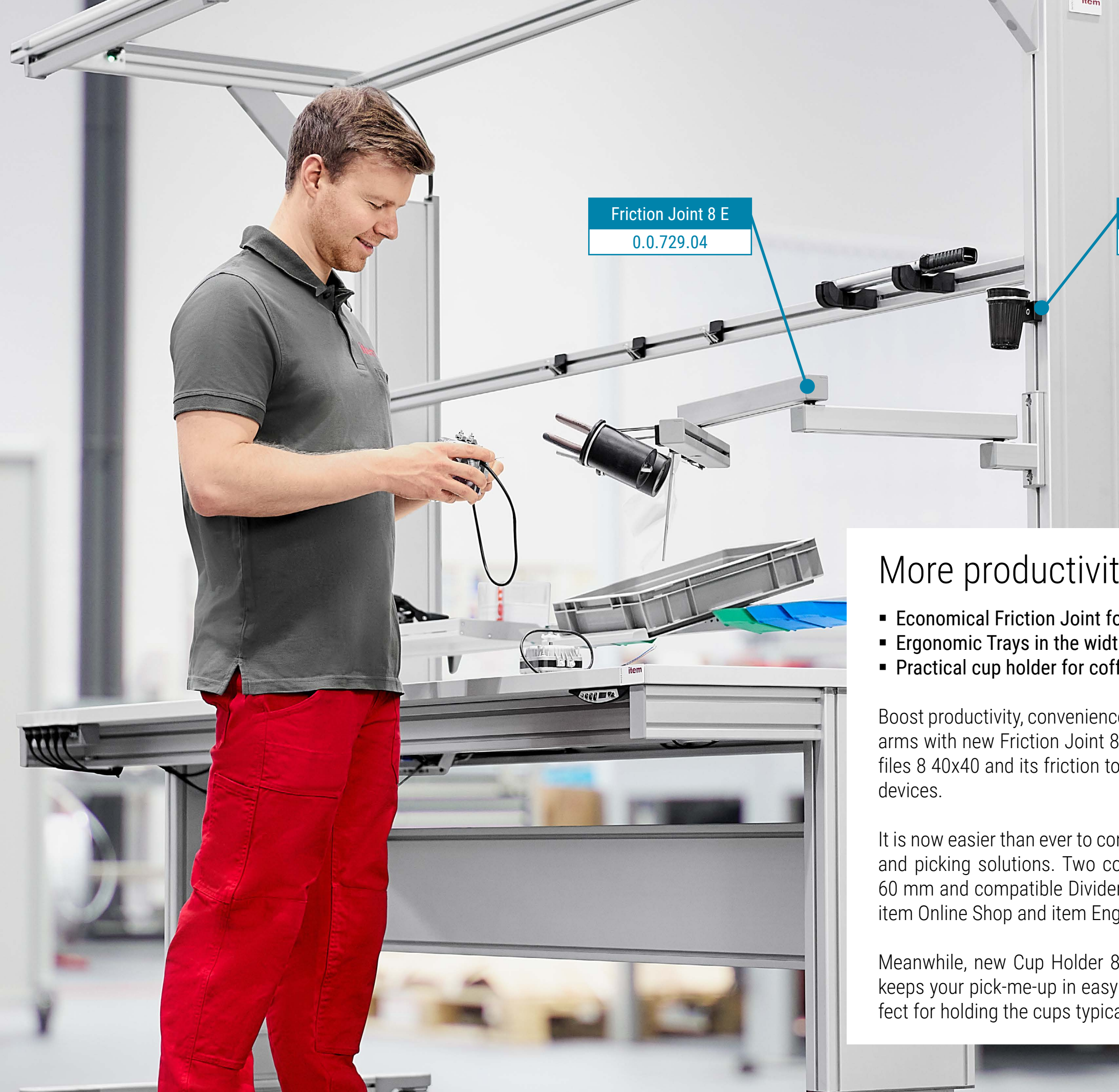
0.0.730.59

- Secure fixing for fitting heavy-duty telescopic rails to a profile frame
- For installing two heavy-duty telescopic rails



Work Bench System

- Friction Joint 8 E
- Cup Holder 8 D60
- Configurable Trays H40 and H60



Friction Joint 8 E
0.0.729.04

Cup Holder 8 D60
0.0.734.97

More productivity at the work bench

- Economical Friction Joint for custom pivot arms
- Ergonomic Trays in the width of your choice
- Practical cup holder for coffee from vending machines

Boost productivity, convenience and comfort – by constructing custom pivot arms with new Friction Joint 8 E. The rotating joint is easy to attach to Profiles 8 40x40 and its friction torque can be precisely defined for adjustment devices.

It is now easier than ever to configure Trays and perfect your material supply and picking solutions. Two configurable Trays with edge heights of 40 or 60 mm and compatible Dividers for the tall version are now available in the item Online Shop and item Engineeringtool.

Meanwhile, new Cup Holder 8 D60, which is made of stainless steel wire, keeps your pick-me-up in easy reach at the work bench. Its diameter is perfect for holding the cups typically used in vending machines.

Friction Joint 8 E

New Friction Joint 8 E is an economical solution for building custom pivot arms and other articulated profile constructions. The rotating joint connects together two Profiles 8 40x40.

As its friction force can be precisely metered, the angle between profiles can be adjusted easily while ensuring the connection remains secure.



Friction Joint 8 E

[0.0.729.04](#)

- For building customised pivot arms
- Friction torque maintained with precision

Cup Holder 8 D60

New Cup Holder 8 D60 makes it easy to keep coffee, tea and other drinks safe and secure at the work bench. Made of stainless steel wire, the diameter of the holder is the perfect match for the cups used by vending machines.

Cup Holder 8 D60 is available with a black or grey wire mount.



Cup Holder 8 D60, grey

[0.0.734.96](#)

- Diameter matches vending machine cups
- Holder made from stainless steel wire

Variant:

Cup Holder 8 D60, black

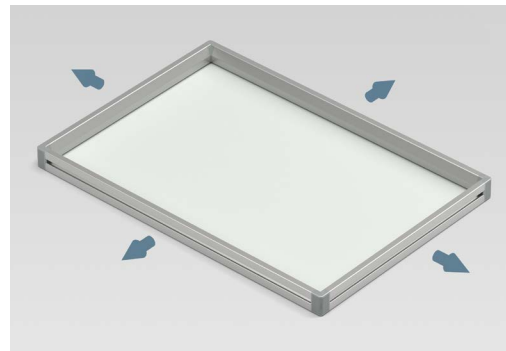
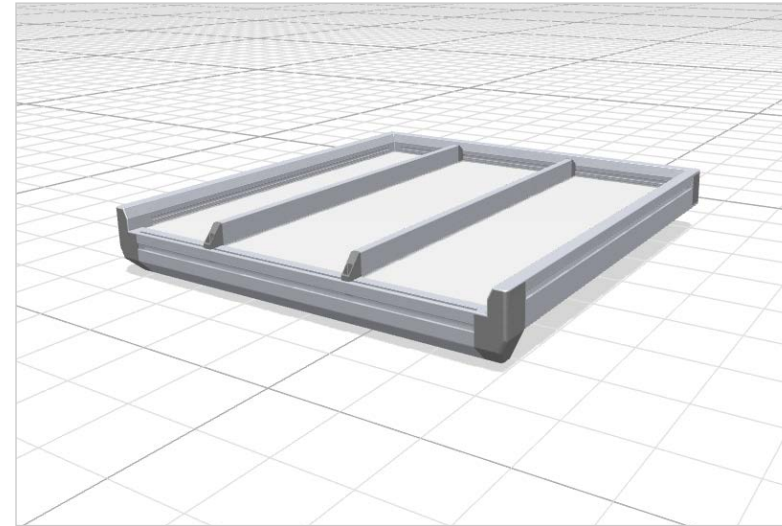
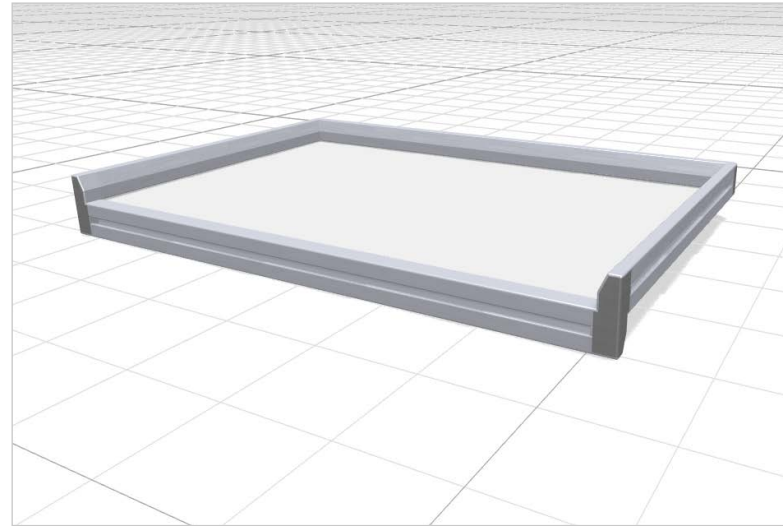
[0.0.734.97](#)

Configurable Trays

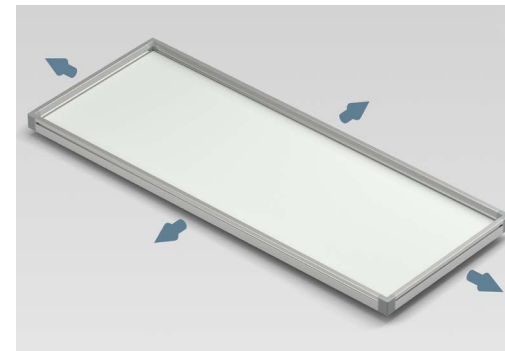
Besides a selection of typical sizes, you can now also configure Trays in custom sizes and designs in a matter of seconds! When working with configurable assemblies, you can choose between Trays with a frame that is either 60 mm high (H60) or 40 mm high (H40). Trays H60 can also be subdivided for material guidance by adding Tray Dividers H60.

When configuring solutions in the item Online Shop and item Engineeringtool, you can now select the dimensions and design that best suit your needs:

- All-round frame for secure transport
- Dropped edge at rear for simple refilling from the rear
- Dropped edges at the front and rear so that Tray Stop or Grab Plate Profiles can be fitted to the front for efficient sorting of C parts, for example

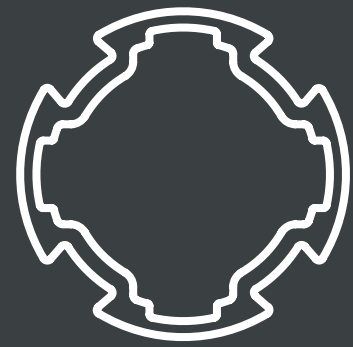


Tray H40
Configurable assembly



Tray H60
Configurable assembly

Tray Divider H60
Configurable assembly



Lean Production Building Kit System

- Panel Holder D30
- Sprocket Wheel z32 D34.8-2

Panel Holder D30 2-5mm

0.0.731.34

Sprocket Wheel z32 D34.8-2

0.0.727.95

Quick cladding for lean production

- Tool-free panel fastening with no additional machining
- Rapid installation of solid panels, even when using diagonal struts
- Added reliability and control for Karakuri/LCA applications

Simply slot panel elements into place! New Panel Holder D30 helps you speed up the installation of panels on Profile Tubes D30. Simply twist it on and it clips into place so that a panel element between 2 and 5 mm thick can be inserted. Once you've cut your panel to size, you don't need to machine it any more, which saves time and effort.

This economical panel fastening simplifies retrofitting work on pre-existing solutions, even when the frame in question has been reinforced with diagonal struts. A frame made of Profile Tubes D30 can be clad with very little effort if, for example, moving components need to be safely covered over.

New Sprocket Wheel z32 D34.8-2 makes it easier to configure Karakuri/LCA applications with more precision. Together with Sprocket Wheel z16 D34.8-5.2 ([0.0.714.48](#)), you can double or halve rotational speed and torque.



Panel Holder D30

Thanks to Panel Holder D30 2-5mm, you can install panel elements without having to drill holes in them or machine them. All you need to do is clip the holder onto a Profile Tube D30. Two Panel Holders D30 can be fitted at a 90° angle to each other at the same point on a corner profile so constructions can be clad around corners.

The panel element is simply inserted into them. Panel Holders positioned on vertical and horizontal profiles work together to support the panel.

The panel element is held in front of the profile frame. Diagonal struts are therefore behind the cladding.



Panel Holder D30 2-5mm

[0.0.731.34](#)

- Economical fastening for panels between 2 and 5 mm thick
- Quick to fit without having to machine the panel element

Sprocket Wheel z32

New Sprocket Wheel z32 D34.8-2 can be used to convert the rotational speed and torque on Karakuri/LCA applications. Together with Sprocket Wheel z16 D34.8-5.2 ([0.0.714.48](#)), you can double or halve rotational speed and torque. Thanks to their identical internal diameters, both Sprocket Wheels can be fastened to a Profile Tube D30 using Adapter Sleeve D30-43 M35 ([0.0.714.50](#)).

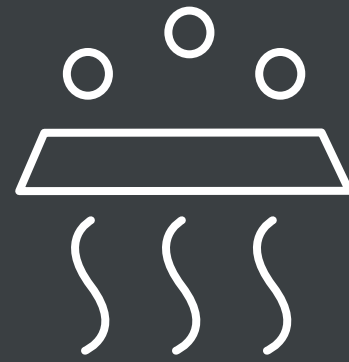
The transmission ratio means, for example, that a Braking Roller can be supported in order to enhance process reliability.



Sprocket Wheel z32 D34.8-2

[0.0.727.95](#)

- 32 teeth to fit Chain 1/2" ([0.0.465.17](#))
- Converts rotational speed in Karakuri/LCA applications



Clean production

- Material Airlock X 8, Locking Mechanism
- Material Airlock X 8

Material Airlock X 8
Configurable assembly

Material Airlock X 8, Locking Mechanism
0.0.734.21

Clean material transfer for cleanrooms

- Material Airlock prevents contamination
- Mechanical locking system prevents both doors being open at the same time
- Configurable assemblies for rapid customisation

Material supply perfectly coordinated! A Material Airlock acts as a secure link between a cleanroom and the outside world, ensuring products and consumables can be safely moved from one to the other. It provides a means of transferring materials quickly and with minimal pressure loss between the overpressure environment of the clean production room and the surrounding area.

For optimum performance, the size of the Material Airlock must be tailored to the products being transferred through it. Our modular Material Airlock makes it exceptionally easy to do just that. A configurable assembly in the item Online Shop gives you the option to customise all parameters such as outer dimensions, the position of grooves for connections, and which side the door opens from.

At the heart of this application is Material Airlock X 8, Locking Mechanism. This ingenious mechanism makes sure that both doors can't be open at the same time. The locking mechanism is intuitive to use, even when wearing gloves.

Material Airlock X 8, Locking Mechanism

The technology used in Material Airlock X 8, Locking Mechanism ensures that only one door of the Material Airlock can be open at a time. It automatically locks shut the door at the opposite side. This intuitive solution doesn't require any wiring and prevents incorrect use.

The two latches are connected by a Tube D6.3 (0.0.476.72). This can also be ordered in the item Online Shop. When using the configurable assembly, all additional components are added automatically.



Material Airlock X 8, Locking Mechanism

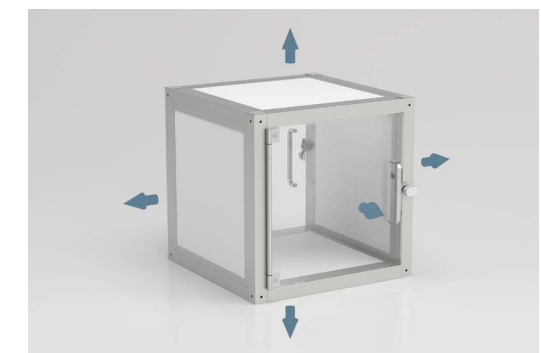
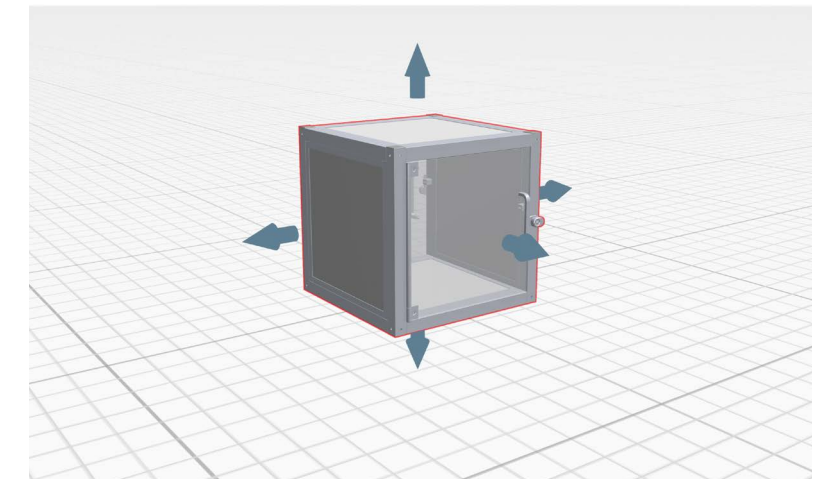
0.0.734.21

- Locking system prevents both doors from being open at once
- Mechanism reliably prevents incorrect use

Material Airlock X 8

This configurable assembly is the efficient way to produce a finished solution. Thanks to the item Building Kit System, you can tailor every detail of the Material Airlock to your application. The height, width and depth of the opening, which side each door opens from, the position of the grooves for connections – all can be selected as required. The assembly automatically calculates the correct dimensions for all components and puts together the materials needed to meet your requirements.

Material Airlock X 8 is supplied ready for installation. This preassembled solution is therefore exceptionally easy to install.



Material Airlock X 8
Configurable assembly



item Industrietechnik GmbH
Friedenstrasse 107– 109
42699 Solingen
Germany
+49 212 6580 0
info@item24.com
item24.com

item. Your ideas are worth it.®

About the publisher

item is the pioneer in building kit systems and digital tools for industrial applications and a global market leader. It has been developing and distributing products and solutions for building machinery, fixtures and plants since 1976. The company's product portfolio comprises more than 4500 high-quality components and innovative software. Together, they simplify the design and construction of factory equipment for production and intralogistics operations all around the world. Applications range from work benches and lean production solutions, through material supply and automation, to robotics and cleanroom applications. item employs more than 1100 members of staff worldwide and works with specialised partners in more than 50 countries.

© item Industrietechnik GmbH 2026