

item

New products 2025



item

ADD
YOUR
DIMENSION



Innovations give you the creative flexibility you need to push the limits of what is possible. Our team of engineers, technicians and product designers is constantly working to bring you new products and applications so you can turn your ideas into reality more efficiently.

It is your creativity and inventiveness that transform a physical structure into an innovative solution. That extra dimension makes all the difference.

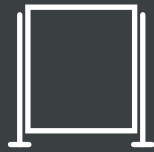
So, **Add Your Dimension!**

How do you do that? You can use the 130 or so new components that item has developed this year, as well as the **configurable assemblies** and editable example solutions in the item Online Shop.

Thanks to digital engineering, tasks that used to require an engineering order and lots of detailed research can now be completed in next to no time.

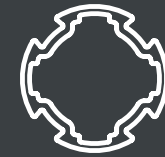
At item, it's all about your ideas.
Add Your Dimension!

The highlights at a glance



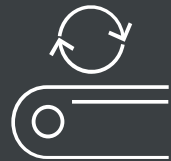
Enclosures and guards

- Guard 8
- Steel Mesh Fixing Block 8 Zn



Lean Production Building Kit System

- Profile 8 40x40 1N D30 light
- Castors with foot protection



Conveyor Belt System

- Indirect drive
- Railing Holder 8 K



Signalling

- Preassembled M22 operating elements
- Positive-switching LED Strip RGB 24V



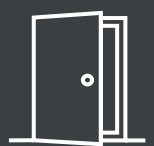
MB Building Kit System

- Quick Coupler 8
- Profiles WFC 8
- Automatic-Fastening Set 8 S



Digital tools

- Configurable assemblies for faster solution-finding
- New functions in the item Engineeringtool



Door solutions

- Double Access Door 8
- Flush Bolt 40



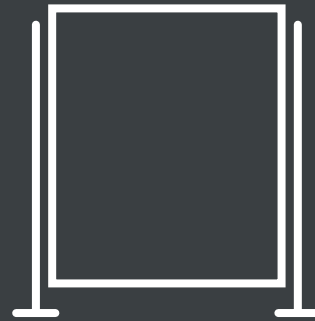
Example solutions

- Over 50 new example applications in the item Online Shop
- The item cleanroom center in Solingen



Work Bench System

- Online configuration of work benches HD
- Universal Tool Holder 8 HD
- Monitor Arms HD



Enclosures and guards

- Strong, configurable and economical – item Guard 8
- Robust and practical – new Steel Mesh Fixing Block 8 Zn



Safety you can plan

- Rapid, reliable online configuration for enclosures and guards
- Guard panels with verified impact resistance for 115, 329 and 767 Joules
- Modular guard panels for time-saving assembly

The system for safety you can rely on. The new item Guard 8 simplifies planning and speeds up assembly for enclosures and guards that satisfy and even exceed the requirements of DIN EN ISO 14120:2016. Comprehensive testing has shown that Guard 8 can be designed to withstand impact loads of up to 767 Joules.

The modular solution comprises mutually compatible Guard Sections, Intersectional Panels, Fixed Panels and Posts. Working in the item Online Shop, you can easily adjust the height and width and swap out panel infills such as steel mesh, polycarbonate and corrugated mesh.

Panels are supplied preassembled to speed up on-site assembly.

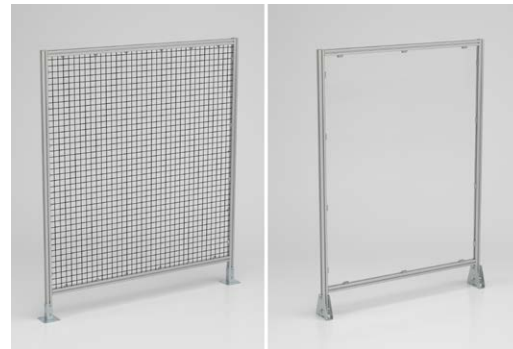
The speedy solution for guards

item Guard 8 is a fully configurable product. Simply enter your requirements in the item Online Shop, and the intelligent online software will take care of all the details.

It will calculate the number of hangers, the necessary profile cross-sections, and the kind of construction needed to deliver the required load-bearing capacity.

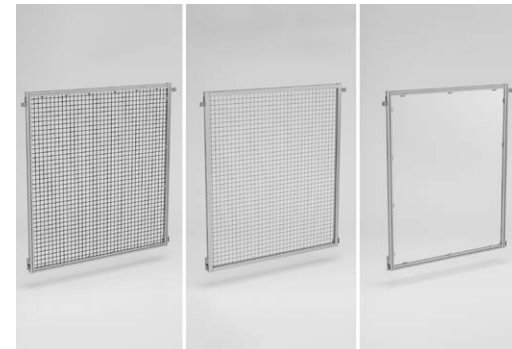
In a matter of seconds, you are presented with custom-designed and optimised guards that you can order directly.

Guard 8 consists of Guard Sections that incorporate posts and panel infills made of steel mesh, polycarbonate or corrugated mesh. Between these, you can fit Fixed Panels or Intersectional Panels that use the posts of the Guard Sections. That makes Guard 8 particularly economical.



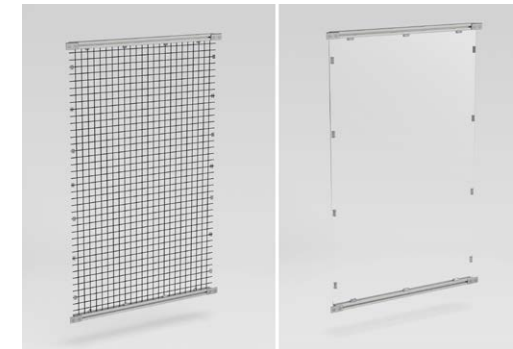
Guard 8, Guard Section

- Freestanding panel including posts and panel element
- Online software determines the design based on width



Guard 8, Fixed Panel

- Panel element enclosed in a profile frame
- Perfect for use as a maintenance panel, thanks to standard-compliant safety hangers



Guard 8, Intersectional Panel

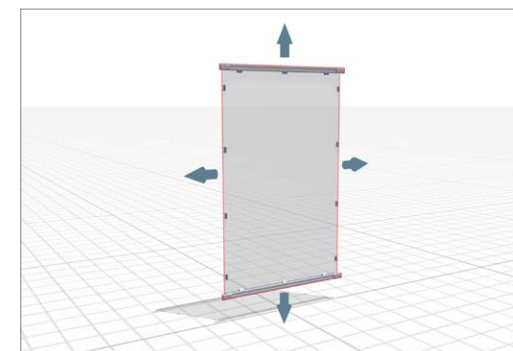
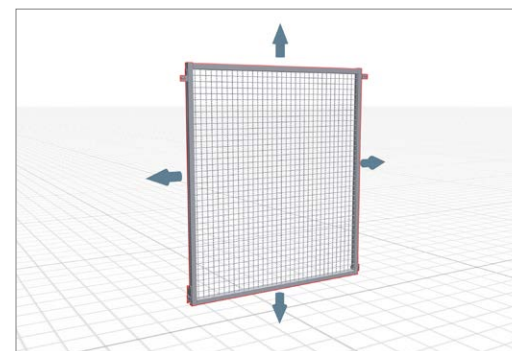
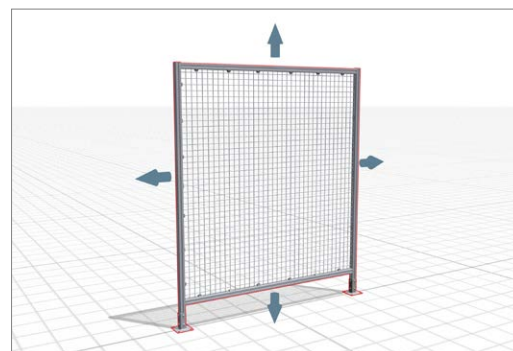
- Panel element with two horizontal profiles
- Installed permanently between two Posts or Guard Sections



Guard 8, Post

- Upright post for guards
- Cross-section calculated to suit load-carrying capacity

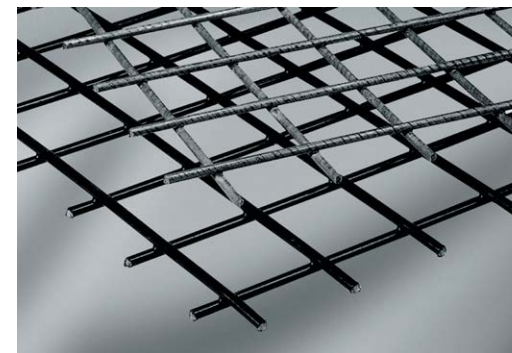
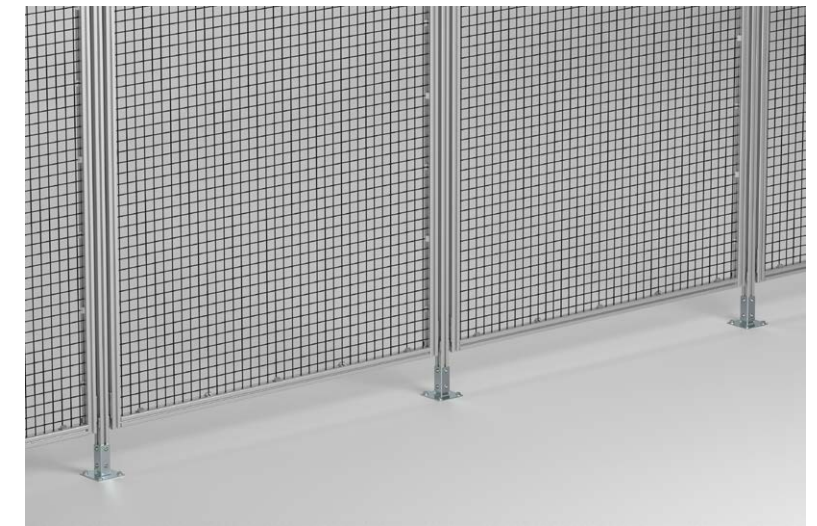
Configuring item Guard 8 online





Components for building guards

Use these new components to design your own enclosures and guards that can be combined with other systems. You can find a wide variety of profiles and useful products for this purpose in the item Online Shop.



Panel Fixing Block 8 4mm Zn

[0.0.726.08](#)

- Fastens in place 4-mm-thick polycarbonate or PET-G panels
- Simple, machining-free fixing to Line 8 groove

Steel Mesh Fixing Block 8 Zn

[0.0.725.22](#)

- Fastens in place steel mesh with a wire diameter of 3.8 mm
- Machining-free fixing to a Line 8 groove

Steel Mesh 3.8mm 40x40

[0.0.724.33](#)

- High stability and inherent rigidity
- Corrosion-resistant security for hazard areas

Stand Foot Set 8 St 120x120/40x40

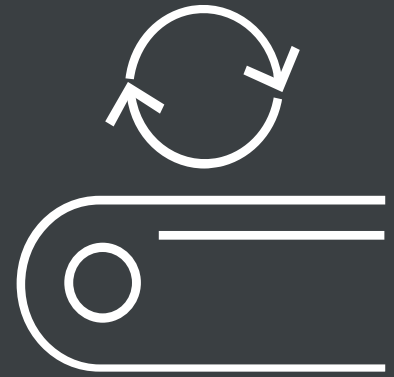
[0.0.721.73](#)

- Height-adjustable fastening for Profiles 8 40x40
- Four holes for secure floor anchoring

Variant:

Stand Foot Set 8 St 140x140/80x40

[0.0.722.12](#)



Conveyor Belt System

- Conveyor belts with a space-saving indirect drive
- Fast-fit railing holders

Rod D8 -150
0.0.732.03

Double Flat Belt Conveyor 8 40 I
0.0.732.32

Motor Fastening Set 8 40 D14 I, right
0.0.731.07

Conveyor belts with an indirect drive

- Motor located below the belt to save space
- Especially slim motor fastening set
- Simple transport option for wide goods

The item indirect drive helps you use the installation space around a conveyor belt particularly efficiently. Thanks to the compact motor fastening sets, the drive is located underneath the conveyor belt, meaning the discharge end of the conveyor line is only marginally wider than the belt itself.

This ensures that wide goods can also be moved around with ease. What's more, it leaves more space clear for installing structures above the discharge end of the conveyor, and staff can access the area from both sides.

Components for conveyor belts with an indirect drive



The motor in the item indirect drive system is suspended beneath the conveyor belt. The corresponding motor fastening set can be fitted on the right or left-hand side of the relevant drive pulley for a flat belt or timing belt.

Like all item conveyor belts, the indirect drive also uses the highly efficient item Motors AC D14 with separate gearbox (IE2 efficiency) and Motors AC D16 with integrated gearbox (IE3 efficiency).



Motor Fastening Set 8 40 D14 I, left

[0.0.731.06](#)

- Fastened to the left of the conveyor belt in the direction of travel
- Configured as appropriate to the desired drive

Variant:
Motor Fastening Set 8 40 D16 I, left
[0.0.731.08](#)



Motor Fastening Set 8 40 D14 I, right

[0.0.731.07](#)

- Fastened to the right of the conveyor belt in the direction of travel
- Fits to the Line 8 groove of the supporting frame

Variant:
Motor Fastening Set 8 40 D16 I, right
[0.0.731.09](#)



Drive Pulley, Timing Belt Conveyor 8 40 I -40

[0.0.731.52](#)

- Optimised for the item indirect drive
- Available in two widths

Variant:
Drive Pulley, Timing Belt Conveyor 8 40 I -80
[0.0.731.54](#)



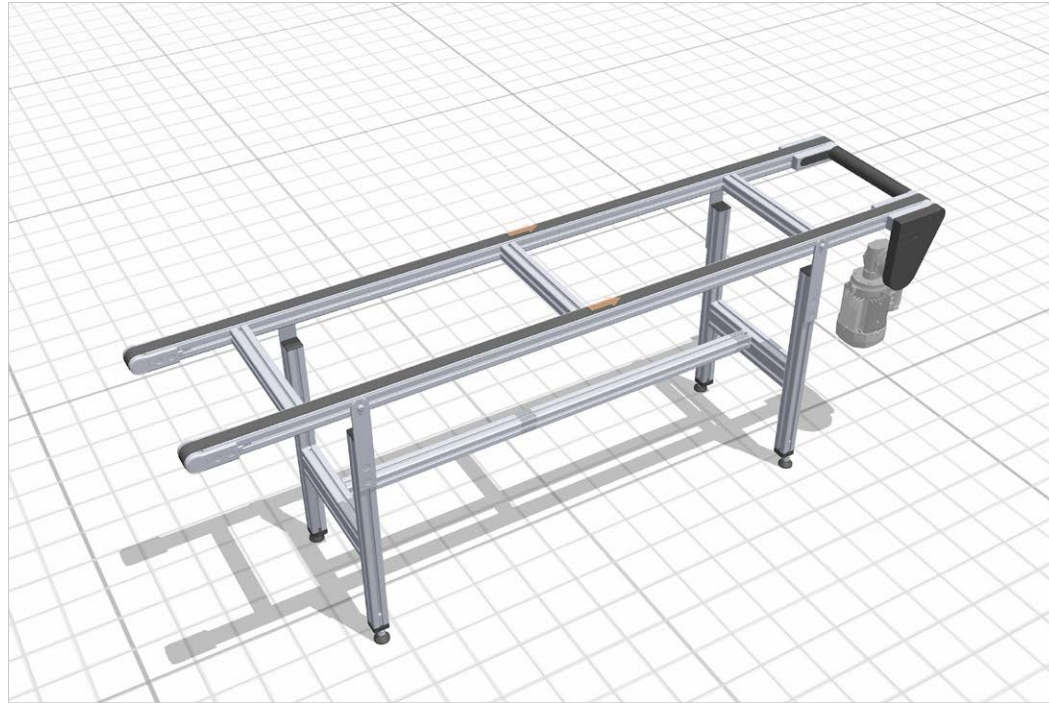
Drive Pulley, Flat Belt Conveyor 8 40 I - 40

[0.0.731.36](#)

- Shaft for connecting the sprocket wheel of the item indirect drive
- Available in eight widths

Variants:
 80 ([0.0.731.38](#))
 120 ([0.0.731.40](#))
 160 ([0.0.731.42](#))
 200 ([0.0.731.44](#))
 240 ([0.0.731.46](#))
 320 ([0.0.731.48](#))
 400 ([0.0.731.50](#))

Convoyeurs à bande item : configurer facilement des solutions individuelles



Le système de convoyeurs à bande item vous permet de configurer votre solution personnalisée en un rien de temps. Il vous suffit de sélectionner l'unité d'entraînement souhaitée (entraînement indirect, entraînement central ou entraînement direct) et l'item Engineeringtool intelligent assemble automatiquement tous les composants dans la configuration et la quantité requises.

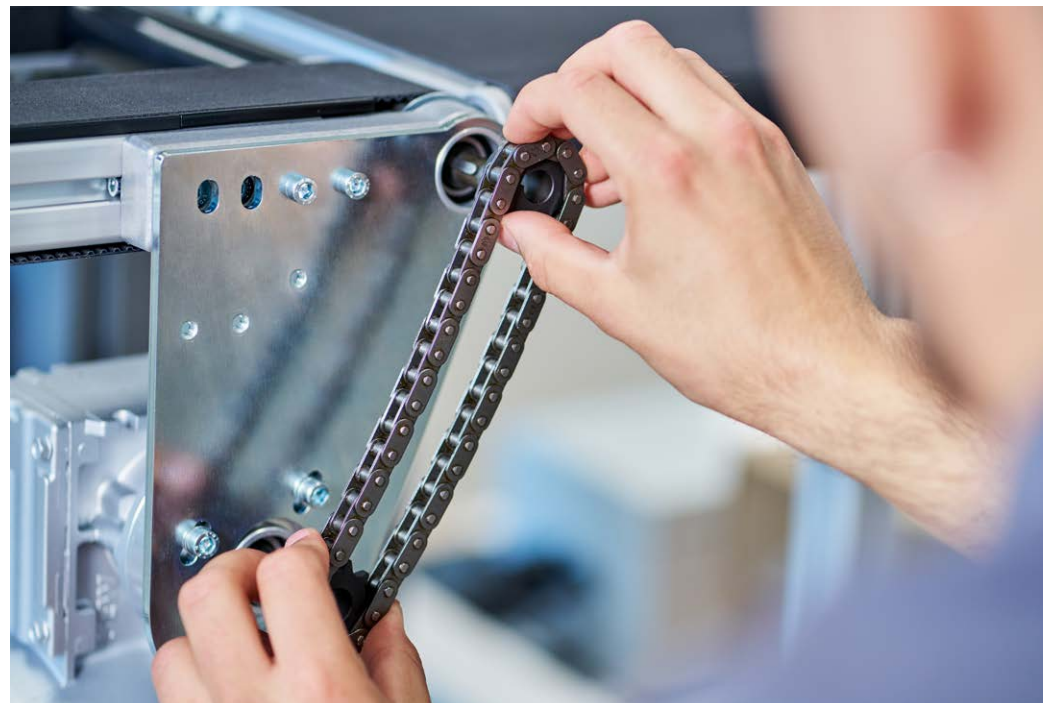
Qu'il s'agisse du type de bande, de l'entraxe ou du moteur adapté : toutes les caractéristiques peuvent être adaptées de manière flexible. Les dépendances sont automatiquement prises en compte, y compris la fixation correcte du moteur pour votre unité d'entraînement. Vous gagnez ainsi du temps et évitez les erreurs.

Dans l'item Engineeringtool, vous pouvez tout aussi facilement ajouter une rambarde et une ossature ou intégrer le convoyeur dans d'autres constructions.

Pièces de rechange pour l'entraînement indirect item

Le kit de fixation moteur de l'entraînement indirect item transmet la force à l'intérieur du boîtier via une chaîne vers le galet d'entraînement pour courroies ou courroies crantées.

Les kits de fixation du moteur sont conçus pour une longue durée d'utilisation. Le pignon et la chaîne peuvent être facilement remplacés en cas d'usure.



Chaîne 3/8" 1x44
0.0.730.94

- Chaîne à simple rangée, rivetée sans fin, dimension 3/8 pouce
- Pré-lubrifiée et directement prête à l'emploi



Jeu de pignons z10 d12
0.0.730.99

- Particulièrement durable grâce aux dents de pignon trempées
- Montage rapide par emboîtement avec bague de sécurité

Additions to the item railing system

These additions to the item railing system make it easier to install side guides with fixed spacings.

Railing Holder 8 K is fitted in seconds – simply twist it into a Line 8 groove on the supporting frame, and it holds without needing any screws. Next, just press on Slide Strip 5 ESD (0.0.437.15) or Slide Strip D30 (0.0.634.59) to create your guide rail. There's no faster way to install a railing.

Rod D8 -150 is used with Railing Holders 8 D8 (0.0.718.49), which connect it to the groove on the supporting frame and a side guide in the form of Profile 8 24x20 D30 (0.0.719.20). The height of the railing can be customised.



Railing Holder 8 K

0.0.724.39

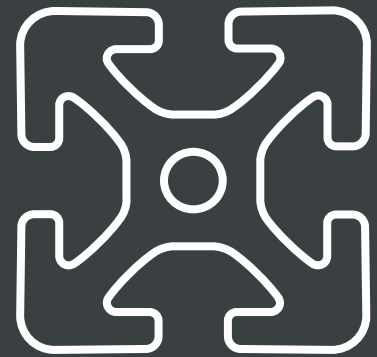
- Rapid installation – simply twist the holder into the profile groove
- The height and clearance of the railing are set



Rod D8 -150

0.0.732.03

- For a particularly robust railing with a set clearance from the conveyor line
- The height of the side guidance can be adjusted



Material flow

- Secure positioning with Quick Coupler 8
- Custom conveyor sections with castor balls and brushes

Brush Set 8 D24 ESD
0.0.726.09

Castor Ball Set 8 D24 ESD
0.0.726.05

Quick Coupler 8
0.0.731.92

Material flow you can rely on

- Accurate alignment of mobile solutions
- Secure stopping and precise decoupling
- Custom conveyor sections with castor balls and brushes

The new item Quick Coupler 8 guarantees accurate positioning when materials are being transferred on the move. The compact release unit of the Quick Coupler automatically clips into the receiver. This keeps the rack and the mobile solution securely connected while goods are transferred.

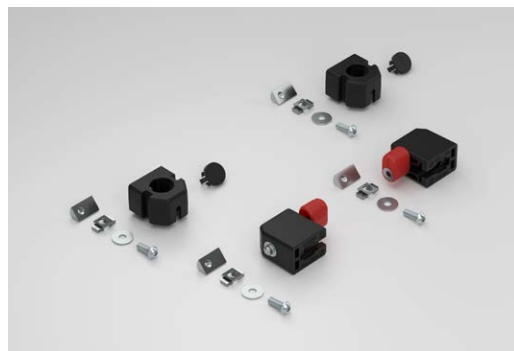
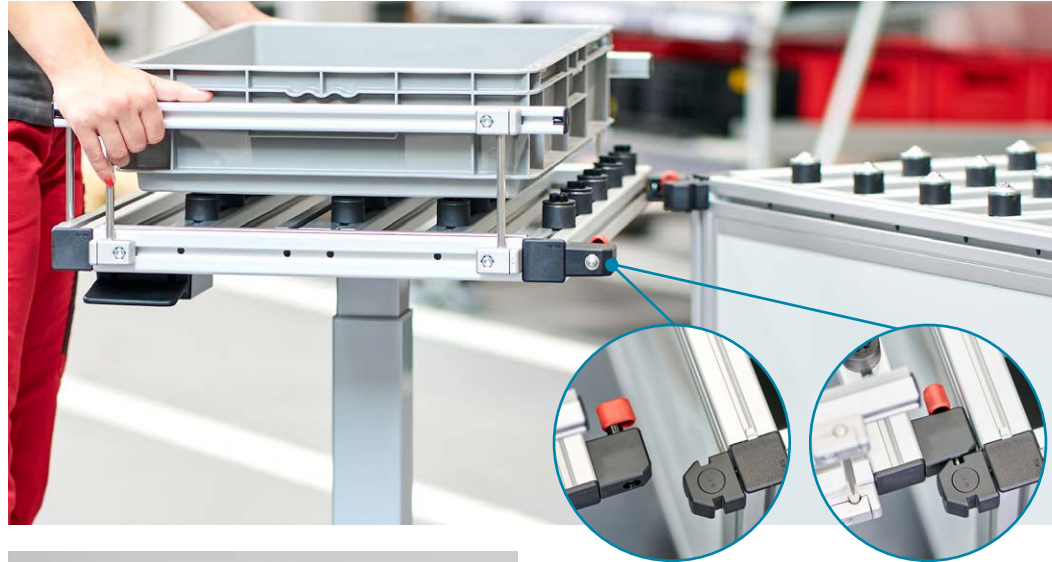
Small gaps keep everything in intralogistics precise. The Quick Coupler can be installed and used in a variety of ways, making a whole host of usage scenarios with mobile trolleys, extensions and frames possible.

The spring-loaded pin of the release unit can be actuated via a Bowden cable to uncouple the transport solution.

You can now fasten castor balls and brushes directly to the grooves of a profile frame to build your own custom, ESD-safe conveyor sections. Brush Set and Castor Ball Set 8 D24 ESD have the same installation height and can be used together.



Components for material flows



Quick Coupler 8
0.0.731.92

- Temporary interlocking for mobile applications
- Compact solution for coupling and alignment

Quick Coupler 8, Release Unit 40x28
0.0.730.05

Quick Coupler 8, Receiver 40x28
0.0.730.06



Brush Set 8 D24 ESD
0.0.726.09

- Material-friendly solution for adding and removing containers
- Non-scratch storage for goods



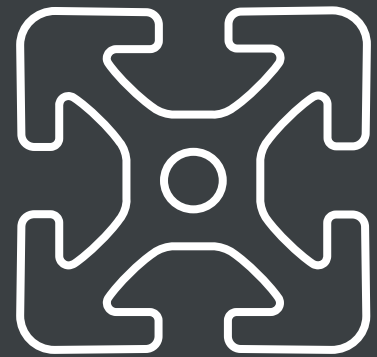
Castor Ball Set 8 D24 ESD
0.0.726.05

- Low-friction castor balls for moving materials
- Create customised conveyor lines directly on Line 8



Stacking Guide 8 St 80x40-30°
0.0.726.91

- Precise positioning when setting down goods
- Fits to the Line 8 groove on the top of a frame



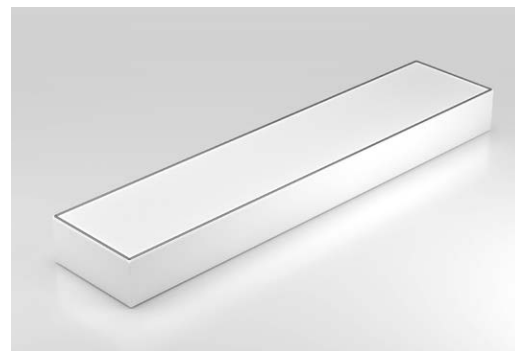
More new products in the MB Building Kit System

- Light up rooms with Drop-In Light Fitting LED 1200x300
- Protect against UV light and electric arcs with strip curtains



More new products for building rooms

New Drop-In Light Fitting LED 1200x300 provides even lighting for large areas. Thanks to a powder coating with zero outgassing and silicone-free materials, this light is especially suitable for industries that rely on cleanrooms, such as the medical technology and semiconductor sectors.



**Drop-In Light Fitting LED
1200x300**

0.0.716.96

- For grid ceilings in cleanrooms and machine cabins
- High-quality panel light for homogeneous light distribution

The GST18-5 system can be used to link a power supply and operating element to several devices via a cascading connection. Male and female connectors are automatically joined in the correct orientation. Up to 30 Drop-In Light Fittings LED 1200x300 can be switched in parallel.



GST18-5 Extension Cable, Socket/Plug, 3m

0.0.732.24

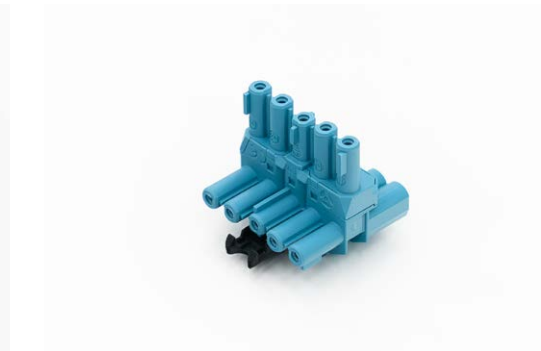
- Preassembled five-core cable
- For cascading light fittings and devices



GST18-5 Connector

0.0.732.14

- Simple cable fitting with screw connection
- Secure hold thanks to integrated strain relief



GST18-5 T-Splitter

0.0.732.16

- For junctions in GST18-5 systems
- Reliable splitter with two female connectors



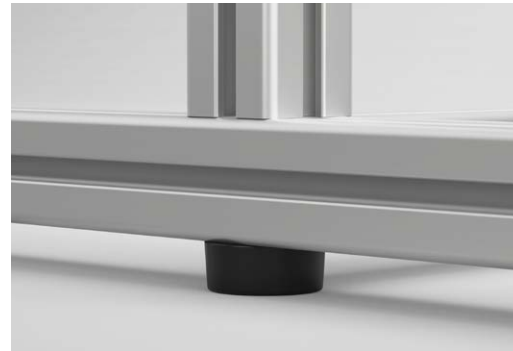
Additions to the item Building Kit System



Profile 8 120x40 8NO light

[0.0.729.10](#)

- Eight closed grooves that can be opened up
- Ideal for building robust machine cabins



Equipment Foot 8 D30 NBR ESD

[0.0.727.22](#)

- Flat, fast-fit foot
- Fastens to Line 8 groove



Multiblock 8 Zn ESD

[0.0.720.63](#)

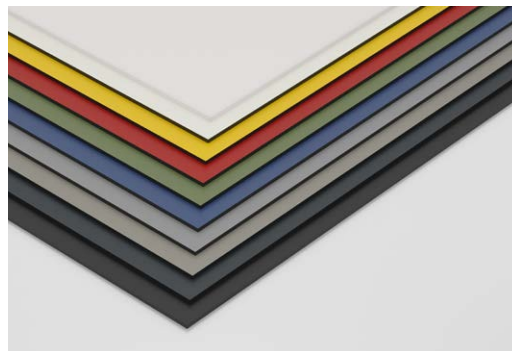
- ESD-safe fastening
- Holds panel elements securely in a Line 8 profile groove



PVC Strip 200x2, transparent red

[0.0.731.88](#)

- Strip curtain for protection from UV light and electric arcs to DIN EN ISO 25980
- Fastened using PVC Strip Holder 8



Plastic 6mm ESD, grey

[0.0.727.33](#)

- Very high abrasion and impact resistance
- Available in lots of colours and thicknesses

Variants:

Grey ([0.0.727.29](#))

White ([0.0.727.42](#))

Black ([0.0.727.50](#))



Telescopic Rail 12.7x45.7 L450 soft close, full extension

[0.0.729.89](#)

- Soft-close rail for drawers
- Ideal for use with the item Drawer System

Variants:

L550 ([0.0.729.90](#))

L650 ([0.0.729.91](#))



Telescopic Rail heavy duty 19.1x53.1 L400, over extension

[0.0.729.93](#)

- High load-carrying capacity and extended pull-out
- Available in four lengths for building drawers

Variants:

L900 ([0.0.729.94](#))

L1000 ([0.0.729.95](#))



Sustainable profiles

- Profiles WFC 8 (WFC = wood fibre composite)

item



Engineering for the bigger picture

There are plenty of lightweight pieces of equipment in factories that don't need the full strength of an aluminium profile. That's where new Profiles WFC 8 from item come in, combining the advantages of a standardised profile featuring Line 8 grooves with an innovative material that satisfies the most stringent requirements for a circular economy.

Profiles WFC 8 40x40 and Profiles WFC 8 80x40 can be connected together with Standard-Fastening Set KH and Angle Bracket Sets 8 PA to build light-duty racks and tables in the usual way.

This sustainable product has a platinum level cradle-to-cradle certification. At the end of its useful life, the material can be fully reprocessed and used to manufacture new profiles. item takes back off-cuts and profiles that are no longer needed from customers across Germany.





New item WFC profiles

item WFC (wood fibre composite) profiles are made up of 75 percent wood fibres that are sourced as a waste product from the saw cutting industry (PEFC certified) and 25 percent recycled PE. Offcuts and old profiles can be reprocessed and re-extruded. This ensures that WFC profiles have a small carbon footprint over their entire lifecycle.

The lightweight profiles are simply sawed to length like wood. Saw-cut edges do not need to be deburred, threads do not need to be tapped separately. This means you can build lightweight equipment and fixtures directly on site without needing any special tools.

Thanks to the Line 8 groove, Profiles WFC 8 are compatible with the item Building Kit System. When using accessories, it is essential to take into account load limits.



Profile WFC 8 40x40, natural

[0.0.724.59](#)

- Sustainable profile in the modular dimension of Line 8
- As easy to machine as wood

Variant:

Profile WFC 8 80x40, natural

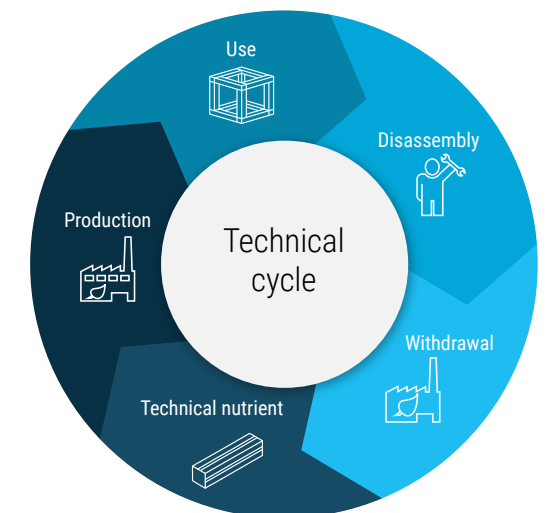
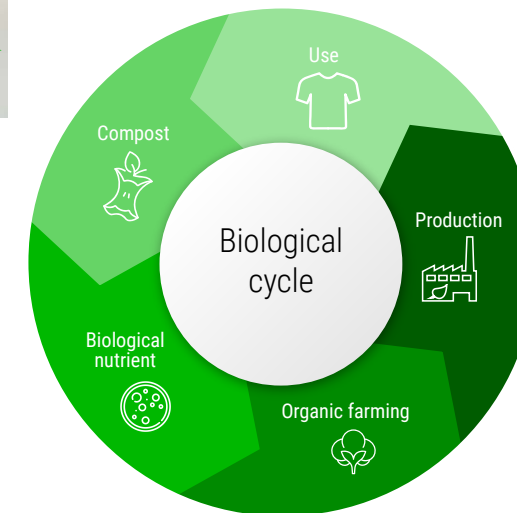
[0.0.724.61](#)

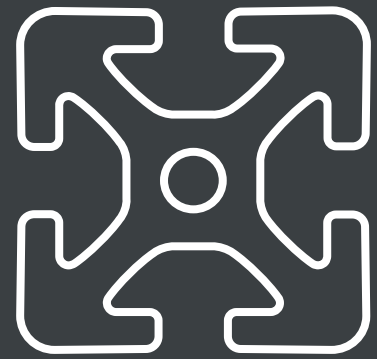
What does cradle to cradle mean?



Cradle to cradle (C2C) is the concept of manufacturing products within a closed material loop that incorporates all raw materials from production right through to end of use. Cradle to Cradle Products Innovation Institute B.V. will only certify a product when it is sustainable over its entire lifecycle and when its starting materials can be reused to manufacture new products.

item Profiles WFC 8 achieve the highest possible standard – platinum – for the lack of harm posed by their material constituents.





Fasteners

- Automatic-Fastening Set 8 S for a particularly strong hold
- Precision connection reinforcement with new item Joining Plates

Joining Plate Set 8 40 120x120-90°L

0.0.707.99

Automatic-Fastening Set 8 S

0.0.724.62

Strong profile connections

- Retrofit reinforcement to connections under particular strain
- Optimised fastening technology for higher load-carrying capacity
- Make assembly easier with new Automatic-Fastening Set 8 S

The item Joining Plate family is growing. Optimised geometries help you add extra rigidity to the outside of profile frames. A whole range of variants are available for a wide variety of installation scenarios.

New, patent-pending Automatic-Fastening Set 8 S boasts impressive load-carrying capacity. The integrated captive screw makes assembly work particularly straightforward and secure.



A closer look at item Automatic-Fastening Set 8 S

Good just got better. Patent-pending Automatic-Fastening Set 8 S exhibits particularly high axial load-carrying capacity. Its innovative thread shape provides an even stronger hold in a Line 8 groove.

To speed up assembly, Automatic Fastener 8 S is screwed into the groove with a prefitted screw. Thanks to the captive screw, you can then tighten the fastener straight away, which can save a lot of time, particularly when working with profiles that have closed grooves.

Two other variants of the innovative fastener make assembly work even easier. To make the construction of rooms and stands more straightforward, Automatic-Fastening Set 8 S 40 comprises a T-Slot Nut with two threads and two Automatic Fasteners. This speeds up the recommended approach of using fasteners in pairs.

Automatic-Fastening Set F 8 S 40 includes one T-Slot Nut F that has two threads and an additional grub screw. The grub screw facilitates secure pre-positioning and creates an ESD-safe profile connection.



Automatic-Fastening Set 8 S
0.0.724.62

- High load-carrying capacity thanks to patent-pending thread
- Simple installation with captive screw

Automatic-Fastening Set 8 S 40
0.0.724.68

- Two Automatic Fasteners 8 S in one set
- Rapid assembly thanks to T-Slot Nut with two threads

Automatic-Fastening Set F 8 S 40
0.0.731.29

- T-Slot Nut with two threads is held in place by a grub screw
- Creates ESD-safe connection by breaking the anodized layer

Cover for closed grooves:

Cap 8 D20 NO
0.0.492.43

An overview of item Joining Plates



Joining Plate Set 8 40 120

0.0.707.98

- Straight flat bracket for adding rigidity to connections
- Robust structural plate screwed into Line 8 grooves

Variant:

Joining Plate Set 8 40 160

0.0.708.01



**Joining Plate Set 8 40 120x120
-90° L**

0.0.707.99

- For right-angled profile connections
- Protection for corners under strain

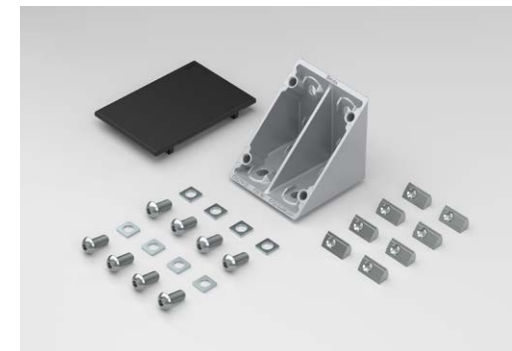


**Joining Plate Set 8 40 120x120
-180° T**

0.0.708.00

- Reinforces T-shaped connections
- Adds rigidity without any additional machining

Innovative fastening technology from item



**Automatic Flat Bracket Set 8
120x40 Al**

[0.0.727.16](#)

- Rapid assembly thanks to automatic T-slot screws
- Simple way to add rigidity to structures

Variant:

**Automatic Flat Bracket Set 8
200x120 Al**

[0.0.727.13](#)

Flat Bracket Set 8 2V 80x40

[0.0.719.50](#)

- Anti-torsion features that can be custom positioned
- Suitable for profiles and grooves in various orientations

Variant:

Flat Bracket Set 8 2V 120x40

[0.0.728.24](#)

Angle Bracket Set 8 80x80x80

[0.0.719.27](#)

- Friction-based, non-machined profile connection
- Reinforces connection points



Door solutions

- Double Access Doors in custom sizes
- Reliable closing with Flush Bolt 40

A whole new dimension in double doors

- Large, sealed access points for cleanrooms and cabins
- Simple design and construction for inactive doors in custom dimensions
- Securely locking double doors that can be used from either side

With the item Double Access Door, you can design lockable access points that are large enough to allow the movement of particularly tall structures or wide objects.

The new inactive door leaf is the ideal complement to item Access Door 8. This passive door element allows you to open up a wider access space as and when it is needed. When shut, the inactive door leaf is securely held in place by Flush Bolt 40 and Round Bar D10 M10, which anchor the door in both a stainless steel floor strike and the door frame.

The Double Access Door can also be opened and closed from both sides and features an all-round seal.

Door Profile 8 80x40
0.0.727.36

Flush Bolt 40
0.0.728.27

Floor Strike D40 D11
0.0.729.78

Door Profile Cap Set 8, Inactive Leaf
0.0.727.54

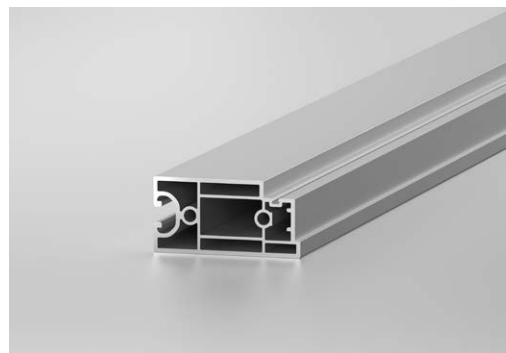


Components for inactive doors

The item Double Access Door is based on components that have been carefully coordinated for highly functional door solutions. It is compatible with the item Access Door and the item Building Kit System, which means just a few specialised components are all that is needed to build an inactive door leaf.

Door Profile 8 80x40 is a slim profile that forms the inside edge of the inactive door leaf and acts as a stop for the active door leaf. The strike plate for the lock on the Access Door can also be integrated into it, as can Flush Bolt 40, which is used to lock and unlock the inactive door leaf.

Frame Profile Seal 10x4.8 (0.0.709.96) ensures the door has an all-round seal.



Door Profile 8 80x40

0.0.727.48

- Inside edge of an inactive door leaf
- Weight-optimised profile for easy-opening doors



Door Profile Cap Set 8, Inactive Leaf

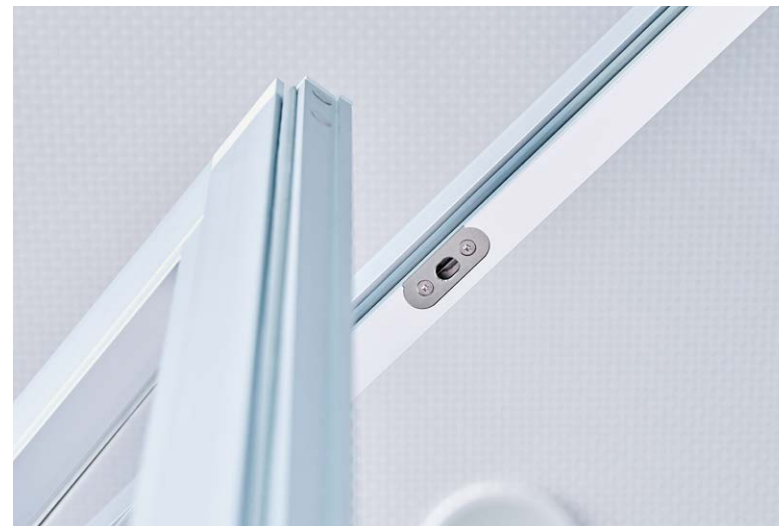
0.0.727.54

- Safe covering for cut edges
- Holes to allow the locking bar of the inactive door to pass through

Flush bolt components

Flush Bolt 40 is used to securely lock and open the inactive door leaf of a Double Access Door. Flipping the toggle lever to lock the door actuates two Round Bars D10 M10, pushing one up into Flush Bolt 40, Strike Plate and the other down into Floor Strike D40 D11.

Flush Bolt 40 is installed at the desired height by milling a slot into Door Profile 8 80x40.



Flush Bolt 40

[0.0.728.27](#)

- Secure locking and unlocking of inactive doors
- Easy to use – simply flip the lever

Flush Bolt 40, Strike Plate

[0.0.728.91](#)

- Top fixing for round bar, installed in the door frame
- Protects the aluminium profile of the door frame

Floor Strike D40 D11

[0.0.729.78](#)

- Bottom fixing for round bar, installed in the floor
- Spring-loaded dust cap keeps dirt out

Round Bar D10 M10 -1500

[0.0.728.94](#)

- Steel bar with external M10 thread at one end
- For secure engagement with floor strike and strike plate

More components for doors and hatches



Door Stop 8 Zn

[0.0.728.13](#)

- High-quality metal stop with lead-in wedge
- Suitable for use with Double Door Stop Set 8 in Double Access Door



Grip Knob Pi D32 M6 PA, black

[0.0.731.97](#)

- Compact handle for opening and closing doors
- For a firm, ergonomic pulling and pushing action

Variant:

Grip Knob Pi D32 M6 PA, grey

[0.0.731.30](#)



Recessed Grip Pi 2-10mm PA

ESD, black

[0.0.727.69](#)

- For doors with no protruding operating elements
- Ergonomically shaped recess offers comfortable grip



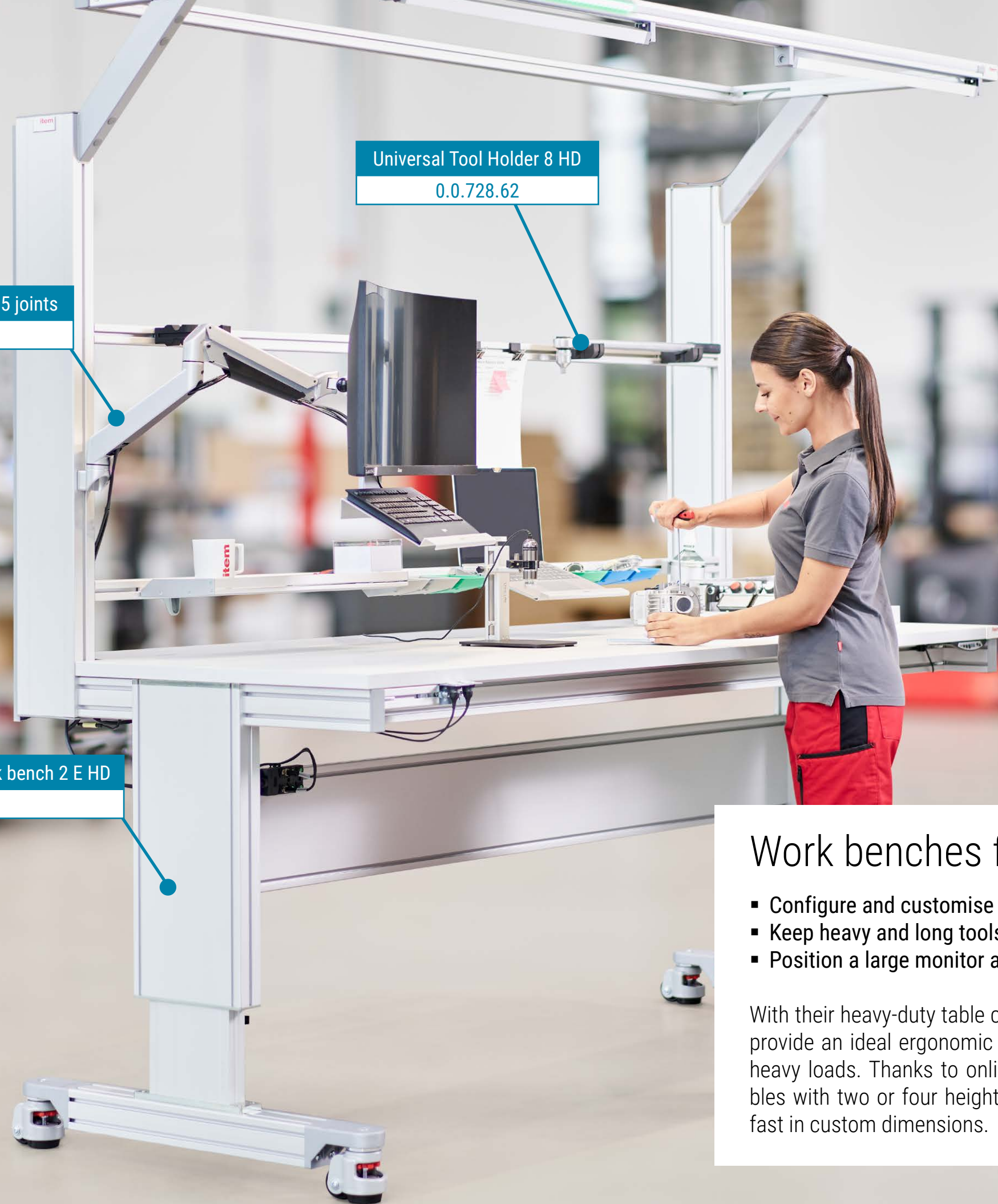
Work Bench System

- Configuring work benches E HD online
- Versatile stowage and storage with Universal Tool Holder 8 HD

Monitor Arm HD, height-adjustable, 5 joints
0.0.731.32

Universal Tool Holder 8 HD
0.0.728.62

Online configuration Work bench 2 E HD
0.0.732.05



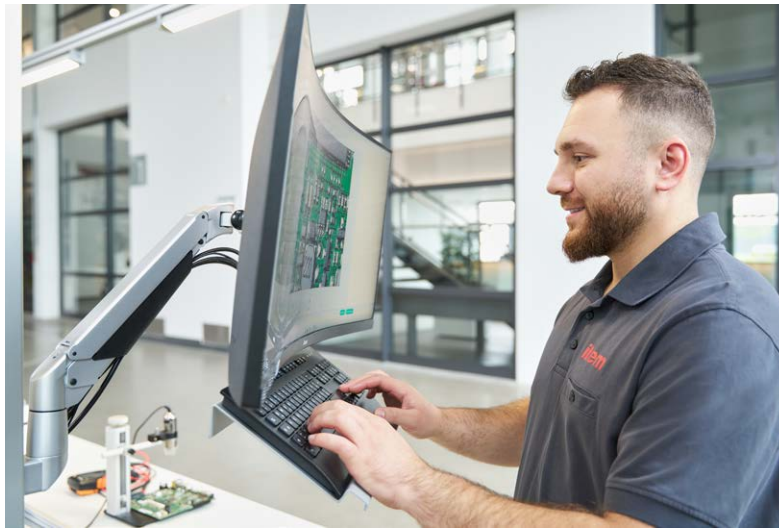
Work benches for tough demands

- Configure and customise heavy-duty work benches online
- Keep heavy and long tools within easy, ergonomic reach
- Position a large monitor and keyboard perfectly in the working area

With their heavy-duty table columns, item work benches 2 E HD and 4 E HD provide an ideal ergonomic working environment, even when working with heavy loads. Thanks to online configuration, fully equipped heavy-duty tables with two or four height-adjustable table columns can be put together fast in custom dimensions.

Ergonomic work bench design

New Monitor Arms HD offer an ergonomic solution for positioning heavy flatscreen monitors combined with a Keyboard Shelf or Thin Client Holder. A gas spring compensates for loads weighing a total of 8 to 20 kg.



**Monitor Arm HD,
height-adjustable, 4 joints**

0.0.731.31

- For flatscreens weighing a total of 8 to 20 kg
- Double pivot arm for a large working radius

Variant:

**Monitor Arm HD,
height-adjustable, 5 joints**

0.0.731.32

Organise large and heavy tools with Universal Tool Holder 8 HD, which fits onto work benches or any Line 8 groove. The spacing between the two support elements can be easily adjusted to suit the diameter and shape of tools.

Both support elements can also be rotated 90° in their groove so tools can be placed down on them or hung on them.



Universal Tool Holder 8 HD

0.0.728.62

- Easily adjustable to suit the diameter and shape of tools
- Two robust holding elements can be rotated 90°



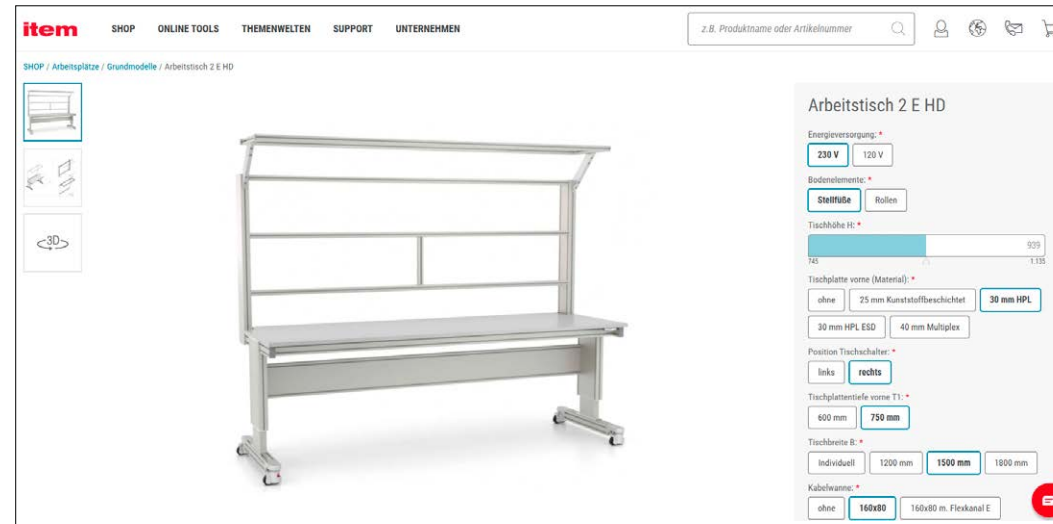
Design options for bespoke work benches



Cantilever Foot 8 160x60 M
790x90

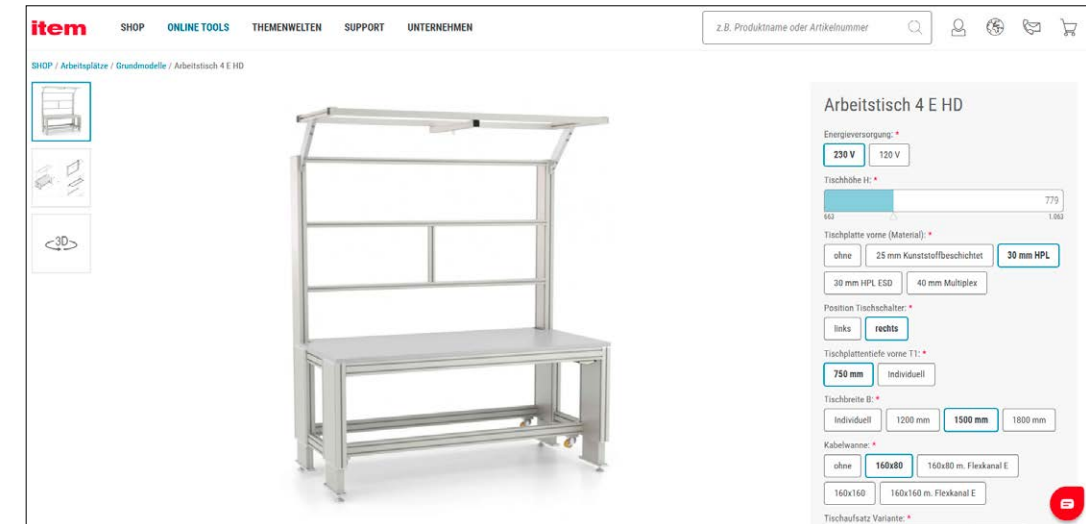
0.0.731.25

- Central fixing point for table columns and profiles
- Ideal for building freestanding constructions



Online configuration Work bench 2 E HD

- Custom configuration and dimensions
- Create an optimised working environment in next to no time

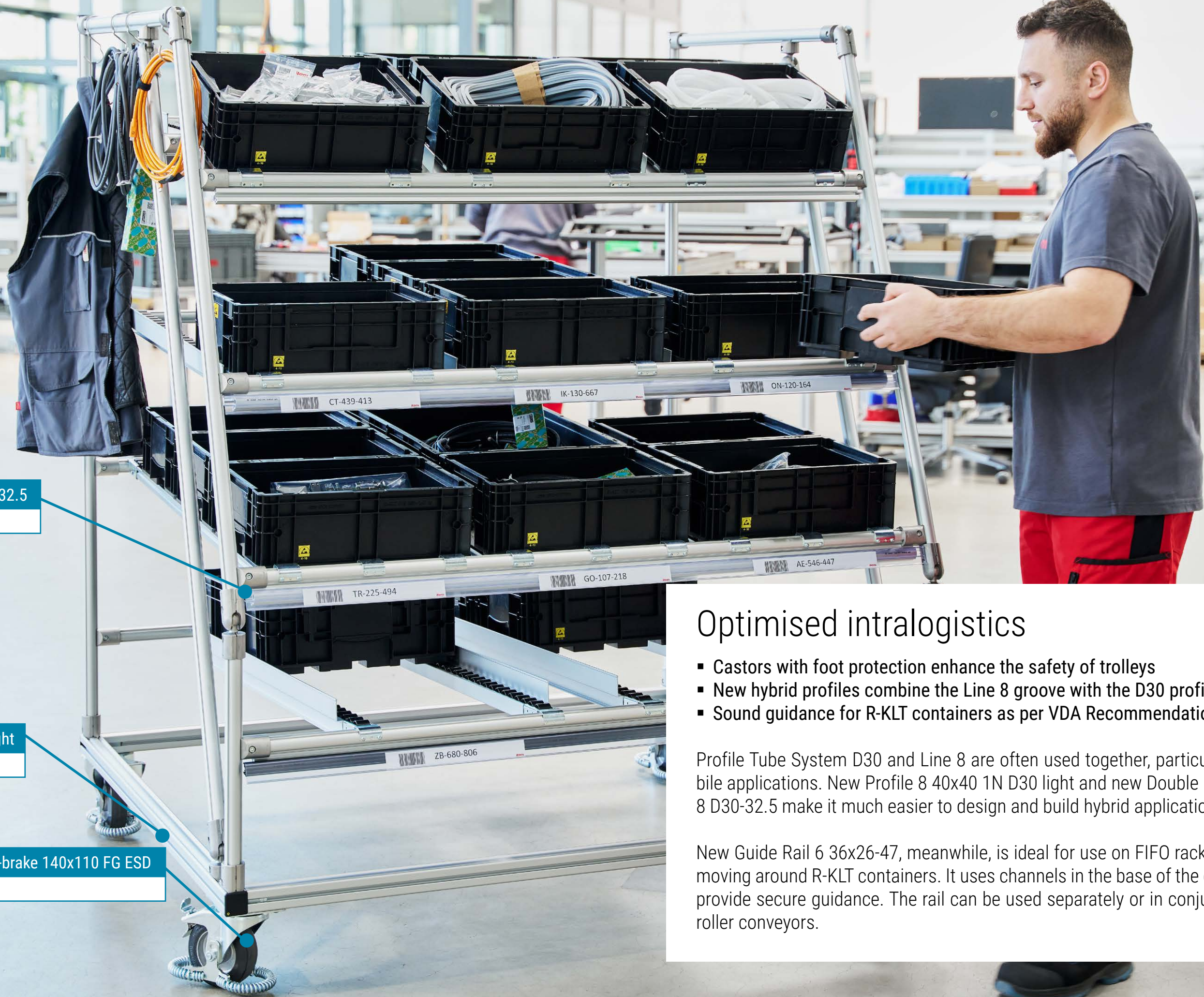


Variant: Work bench 4 E HD



Lean Production Building Kit System

- New profiles with the D30 profile flank and Line 8 groove
- Swivel and fixed castors with foot protection



Double Profile Tube 8 D30-32.5
0.0.728.09

Profile 8 40x40 1N D30 light
0.0.725.25

Castor D125 PU swivel with double-brake 140x110 FG ESD
0.0.729.31

Optimised intralogistics

- Castors with foot protection enhance the safety of trolleys
- New hybrid profiles combine the Line 8 groove with the D30 profile flank
- Sound guidance for R-KLT containers as per VDA Recommendation 4500

Profile Tube System D30 and Line 8 are often used together, particularly in mobile applications. New Profile 8 40x40 1N D30 light and new Double Profile Tube 8 D30-32.5 make it much easier to design and build hybrid applications.

New Guide Rail 6 36x26-47, meanwhile, is ideal for use on FIFO racks and when moving around R-KLT containers. It uses channels in the base of the container to provide secure guidance. The rail can be used separately or in conjunction with roller conveyors.

Components for lean production

Clever combinations made easy. Profile 8 40x40 1N D30 light makes it easier to use (Profile) Tubes and Line 8 profiles alongside each other. The profile is in the modular dimension of Line 8 but also features a Line D30 profile flank.

By contrast, new Double Profile Tube 8 D30-32.5 combines a Profile Tube D30 and a Profile 8 D30 to create a high-strength double profile.

New Guide Rail 6 36x26-47 uses the channels in the base of R-KLT small load carriers, as outlined in Recommendation 4500 of the German Association of the Automotive Industry (VDA), to securely guide these containers. Cap 36x26-47 ESD makes it easier to feed in R-KLTs.



Profile 8 40x40 1N D30 light
0.0.725.24

- Profile 8 light with a D30 profile flank
- Ideal for frames with superstructures made of (Profile) Tubes D30

Variant:
Profile 8 80x40 1N D30 light
0.0.729.70

Double Profile Tube 8 D30-32.5
0.0.728.07

- Strong double profile with joining web
- Combines Profile Tube D30 and Profile 8 D30

Guide Rail 6 36x26-47
0.0.719.29

- Sound guidance for R-KLT containers in FIFO racks
- Uses channel in base of container

Accessories:
Cap 36x26-47 ESD
0.0.719.33

Guide Rail 36x26 e 32
0.0.726.84

- Railing and extra rigidity for Roller Conveyor St D30
- Robust guidance made of anodized aluminium

Variant:
Guide Rail 36x26 e 65
0.0.726.88

Components for transport trolleys



The new item castors with extra safety. Swivel and fixed castors with foot protection stop a foot or other object from getting under the wheel. This prevents injuries, while minimising the risk of a wheel being damaged by foreign bodies. It also reduces the likelihood that the transport trolley could be brought to an abrupt halt by running over something.

The castors are available with two types of foot protection – a spring-type design (FG) and a rigid metal frame (FS).

These robust castors in a diameter of D125 are available with tyres made of PU or TPU. They are fastened to frames using their integrated connecting plate.



Castor D125 swivel 140x110 FS
0.0.729.24

- Rigid safety guard for foot protection
- TPU swivel castor with a load-carrying capacity of 250 kg

Variant:
Castor D125 fixed 140x110 FS
0.0.729.26



Castor D125 PU swivel 140x110 FS ESD
0.0.729.28

- Rigid safety guard for foot protection
- ESD-safe swivel castor made of PU with 350 kg load-carrying capacity

Variant:
Castor D125 fixed PU 140x110 FS ESD
0.0.729.30



Castor D125 PU swivel with double-brake 140x110 FG ESD
0.0.729.31

- Metal coil for spring-type foot protection
- ESD-safe swivel castor made of PU with 350 kg load-carrying capacity

Variant:
Castor D125 fixed PU 140x110 FG ESD
0.0.729.33

More additions to the Lean Production Building Kit System



Fastener D30 T2

0.0.728.51

- Optimised for Double Profile Tubes D30
- Cut-out to accommodate joining web



Release Unit 6 Latch

0.0.725.31

- Improves process reliability
- For the item Suspended Conveyor System



Hook D30/D4-60

0.0.655.91

- Universal hanger for use on (Profile) Tubes D30
- Stable hold, even during movement



Signalling

- Integrate M22 operating elements with ease
- Use positive-switching LED strips

LED Strip RGB 24V PNP, 1m

0.0.724.13

Pushbutton M22 1NO 1NC M12, Male Connector, A-coded

0.0.732.79

Signalling made simple

- Preassembled pushbuttons and selector switches in M22 format
- Versatile holder secures M22 operating elements in a Line 8 groove
- LED Strip RGB 24V now also available with positive switching

More control on the ground. You can now use a new mounting fixture to fasten the new, compact M22 operating elements from item to any Line 8 groove. This gives you a lot of flexibility when integrating switches for LED strips, light fittings and other devices into profile frames and mobile applications. Pushbutton M22 and Selector Switch M22 are preassembled and supplied with a connecting cable and M12 male connector.

When using LED Strips, you can now choose between a PNP (positive switching) and NPN (negative switching) connection. New LED Strip RGB 24V PNP has a positive switching connection, which is used widely in automation technology. LED Strips with NPN switching are still available in the item Online Shop.



Signalling components



Selector Switch M22 1NO 1NC
M12, Male Connector, A-coded
[0.0.730.75](#)

- Configurable as normally open (NO) or normally closed (NC)
- Preassembled turn switch with two positions

Pushbutton M22 1NO 1NC
M12, Male Connector, A-coded
[0.0.732.79](#)

- Preassembled, non-latching operating element
- Easily customisable with five coloured caps

Mounting Set 8, Button/Switch
M22
[0.0.732.80](#)

- For attaching M22 operating elements to a Line 8 groove
- Anti-torsion feature ensures turn switches are held securely

LED Strip RGB 24V PNP, 1m
[0.0.724.13](#)

- Flexible LED strip for displaying custom colours
- Switches positive potential to inputs (PNP)

Variant:

LED Strip RGB 24V PNP, 2m
[0.0.724.18](#)

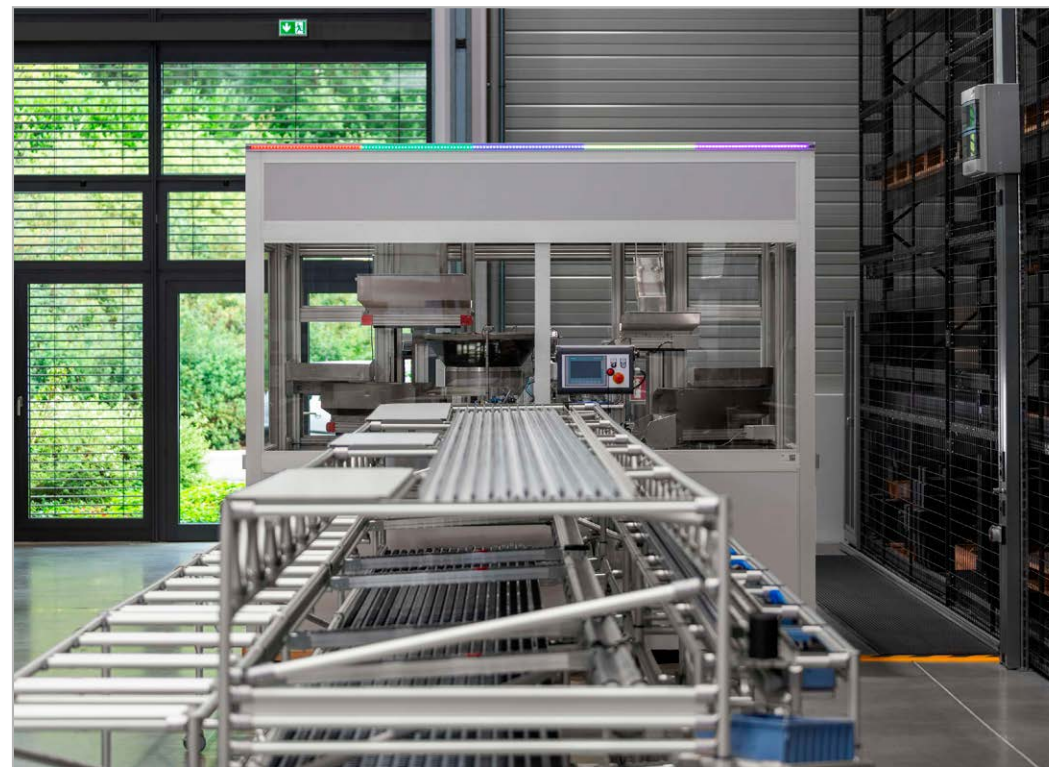
Sample solutions for signalling

The item Online Shop offers countless examples of potential applications. You can order these example solutions as they are, or adapt them to your needs in the item Engineeringtool. It is the most direct route to getting your own bespoke solution with built-in signalling.



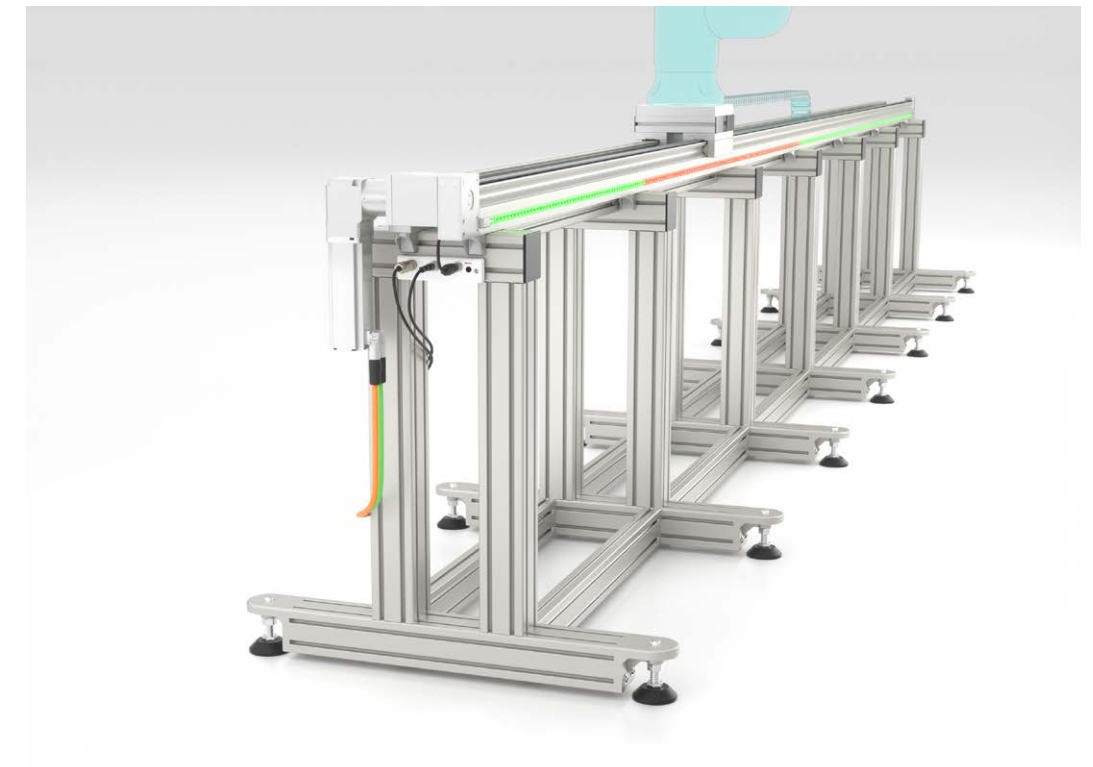
Ergonomic work bench for manual production

This work bench features a large item toolpanel® and additional fixtures for optimum material supply and tool stowage. Staff can use the central, clearly visible LED Strip to signal that they need more materials or assistance – without having to step away from their workstation.



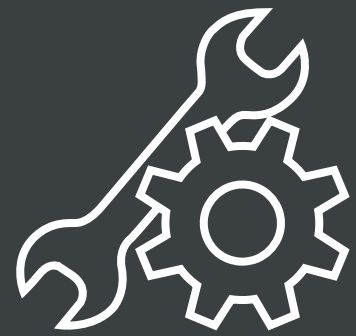
Machine cabin with status light

The multiple LED Strips in this machine cabin can be used to signal whether the working process is underway, how much of its working cycle is left or whether it's safe to access the inside. item LED Strips can be integrated into any Line 8 groove. This gives you a great deal of design freedom.



Tracking indicator for cobot application

Thanks to a dynamic segment display mode that can extend up to 6 metres, you can create even large-scale applications such as this range extender with cobot. Multi-Segment RGB LED Strip Controller IO-Link and a positioning mode help ensure the visual signal can follow the moving application. This has the effect of highlighting the specific working area where access is prohibited. As a result, the cobot, which is mounted on a linear unit, can carry out its work at one station then be safely moved to another.



Digital tools

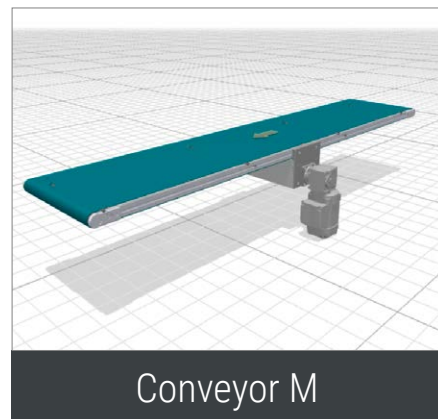
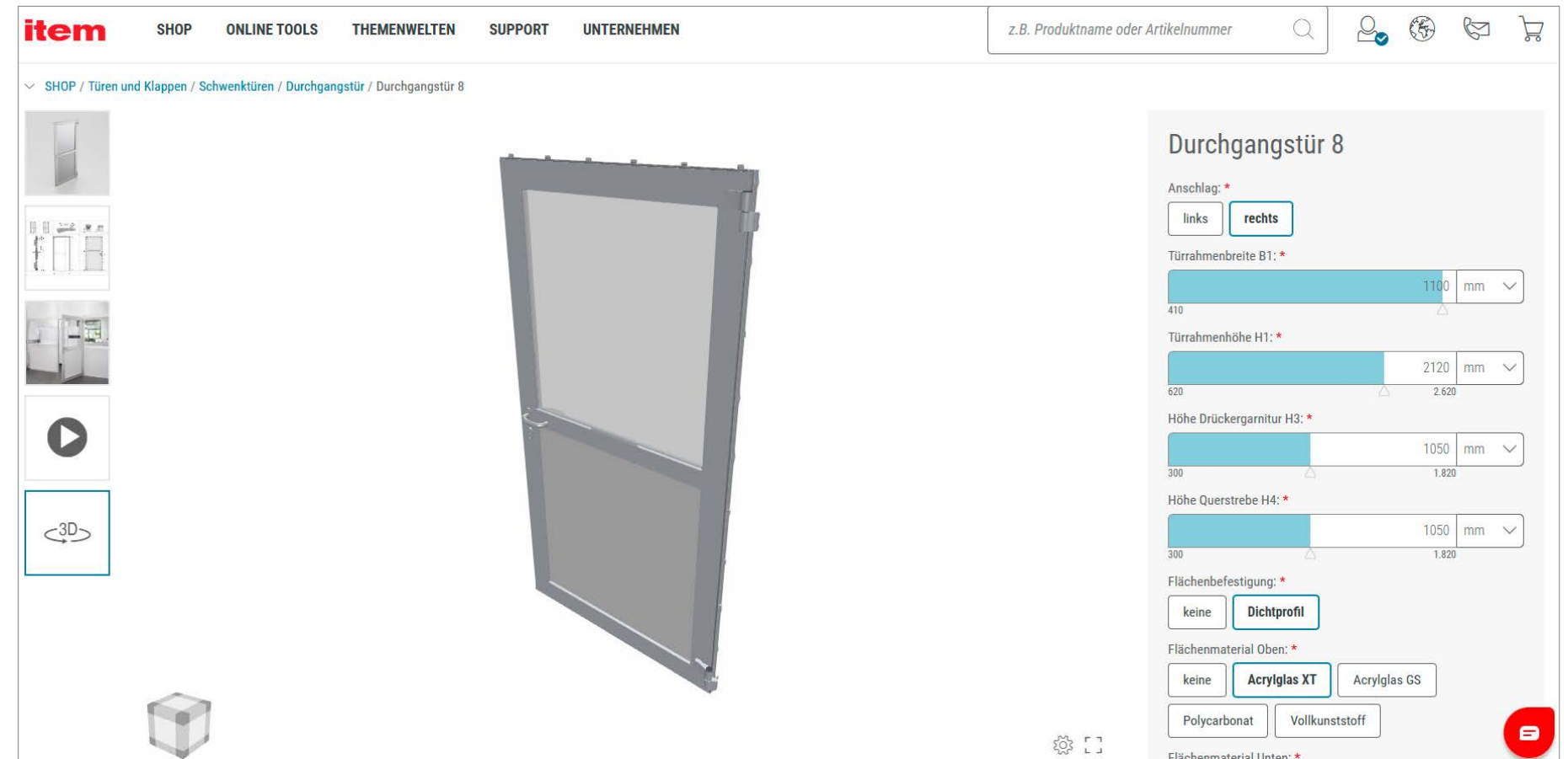
- Find the solution faster – with configurable assemblies
- New functions in the item Engineeringtool

Configurable assemblies for faster solution-finding

Configurable assemblies from item produce perfect results. Ordering functional groups of products in the item Online Shop now takes a lot less time thanks to configurable assemblies. These consist of multiple, coordinated components that are combined for a specific application.

Whether doors, conveyor belts or work benches – you can focus entirely on your project. These intelligent assemblies automatically factor in all interdependencies and select, for instance, the appropriate fasteners for your requirements. As a result, you always get all the components you need – in exactly the right quantity and design. The end result is that you save a lot of time and avoid errors.

Configurable assemblies are being added to the item Online Shop all the time.



Conveyor M

April 2025



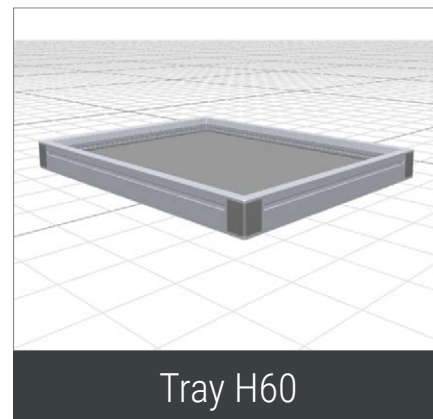
Access Door

April 2025



Work benches E, F and FIFO

May 2025



Tray H60

July 2025



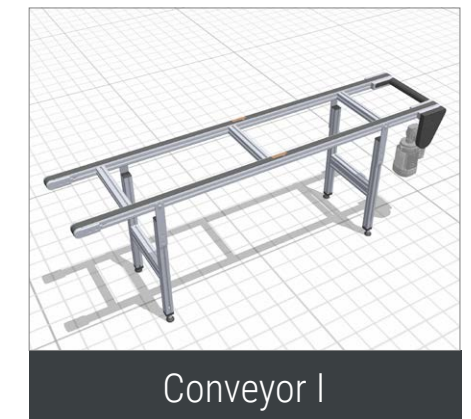
Work bench HD, 8 80x40

August 2025



Guard 8

October 2025



Conveyor I

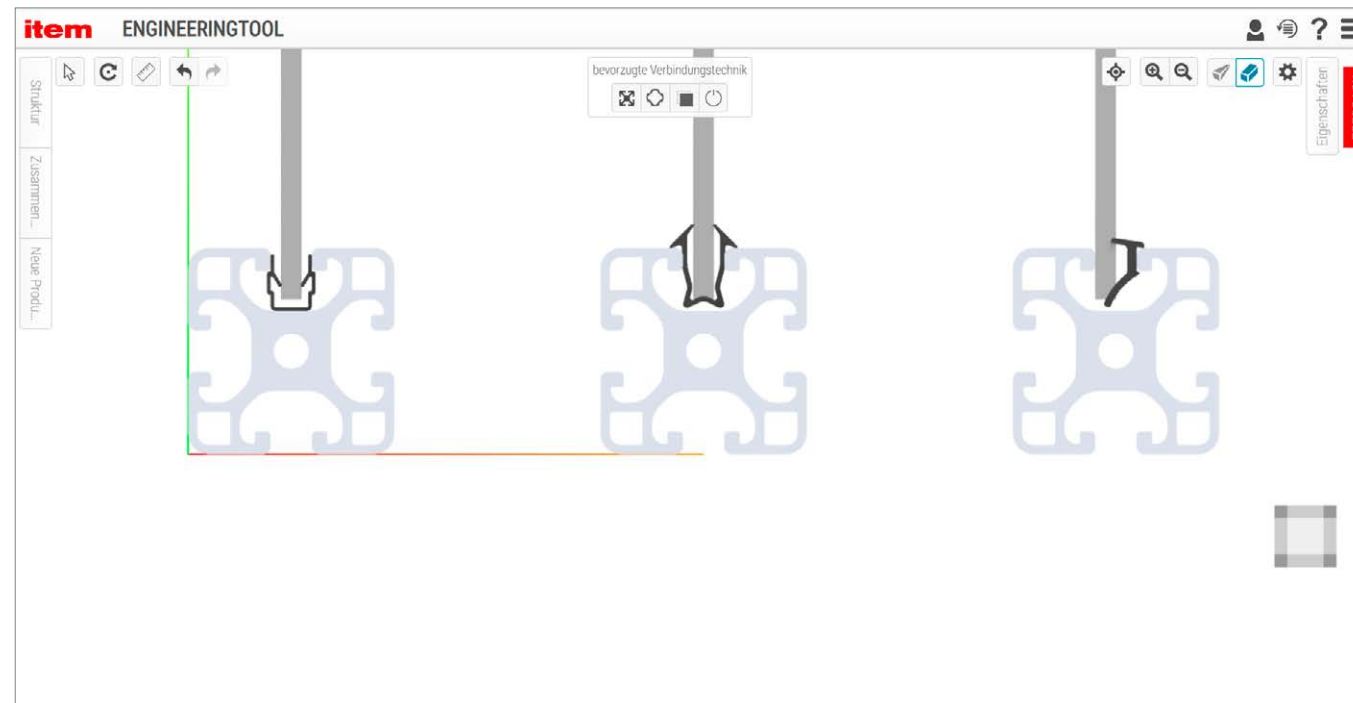
October 2025

New functions in the item Engineeringtool

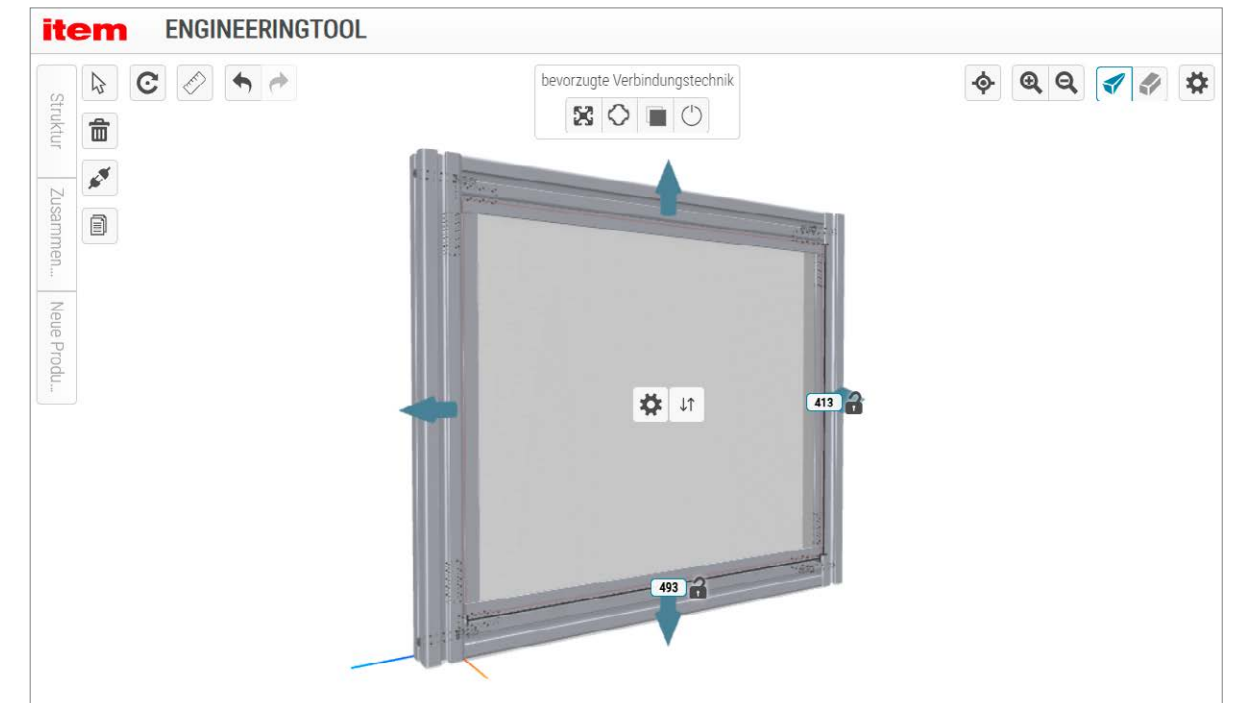
The item Engineeringtool is regularly expanded to include new functions. For example, you can now integrate panel elements exactly the way you want to – in the groove, on the groove or with special fixings. Our online engineering software calculates the appropriate dimensions and helps you position everything onscreen.

To optimise costs, certain components, such as Cover Profiles, are supplied in one length. It is better to cut these to size on site. The item Engineeringtool combines all the individual pieces in one optimum cut-off to minimise waste.

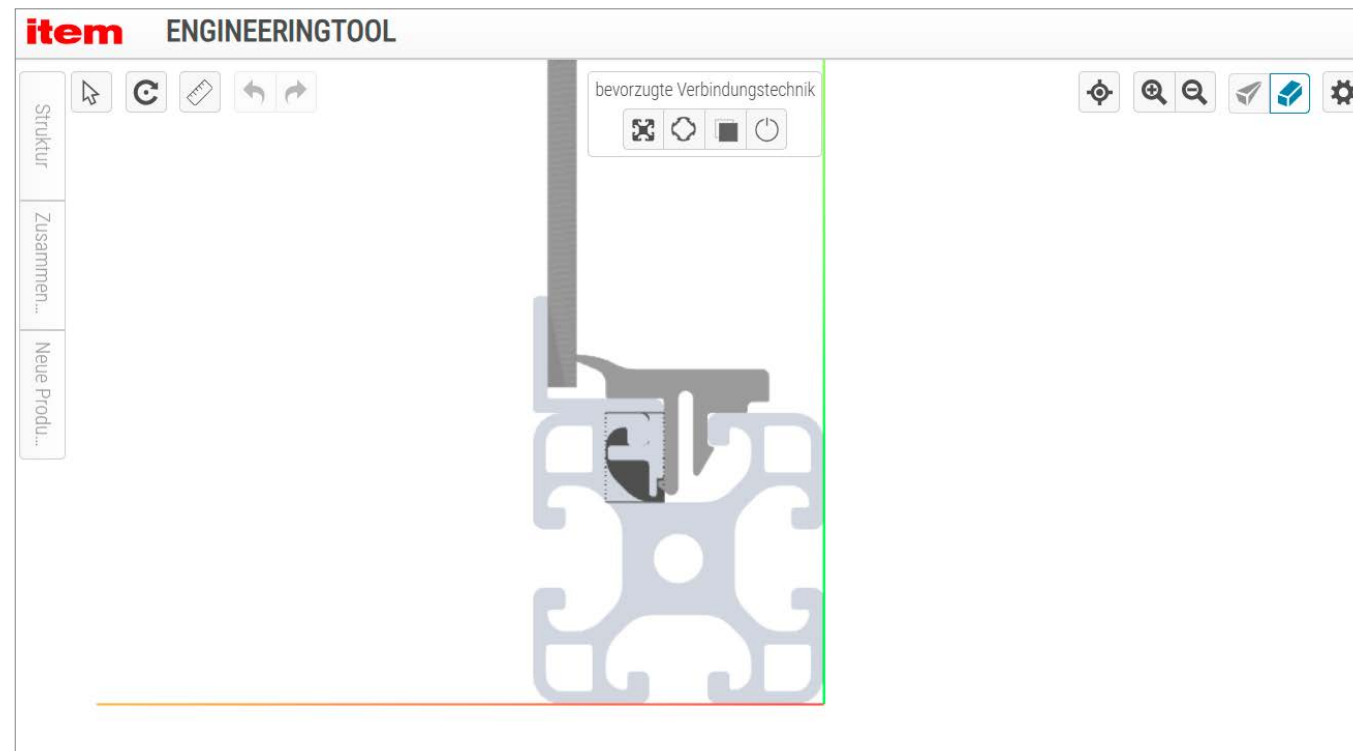
Panel fixing in the groove



Automatically matching panels to their profile frame




Panel fixing using Panel-Clamping Strip



Cut-off optimisation

item item. Ihre Ideen sind es wert.®

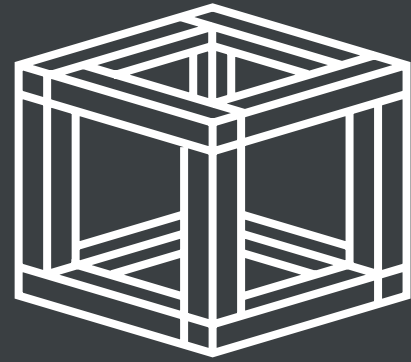
Zuschnittsempfehlung - Abdeck- und Einfassprofil 8, schwarz
Artikel-Nr.: 0.0.422.26

Anklicken oder scannen für weitere Informationen 
i24.ws/42226

Bitte schneiden Sie den Artikel gemäß den folgenden Empfehlungen zu.

1/3 Abdeck- und Einfassprofil 8, schwarz (0.0.422.26)		
<small>Länge: 2000mm</small>		
Anzahl Zuschnitte	Zuschnitt	Position
3	500mm	⑦
<i>Rest: ca. 410mm</i>		

2/3 Abdeck- und Einfassprofil 8, schwarz (0.0.422.26)		
<small>Länge: 2000mm</small>		
Anzahl Zuschnitte	Zuschnitt	Position
1	500mm	⑦
3	440mm	⑥
<i>Rest: ca. 63mm</i>		



Sample solutions

- Over 50 new example applications in the item Online Shop
- Visit the item cleanroom center

Create your bespoke application faster – with item sample solutions

The item Online Shop offers over 300 example applications that you can use as a starting point for your own projects.

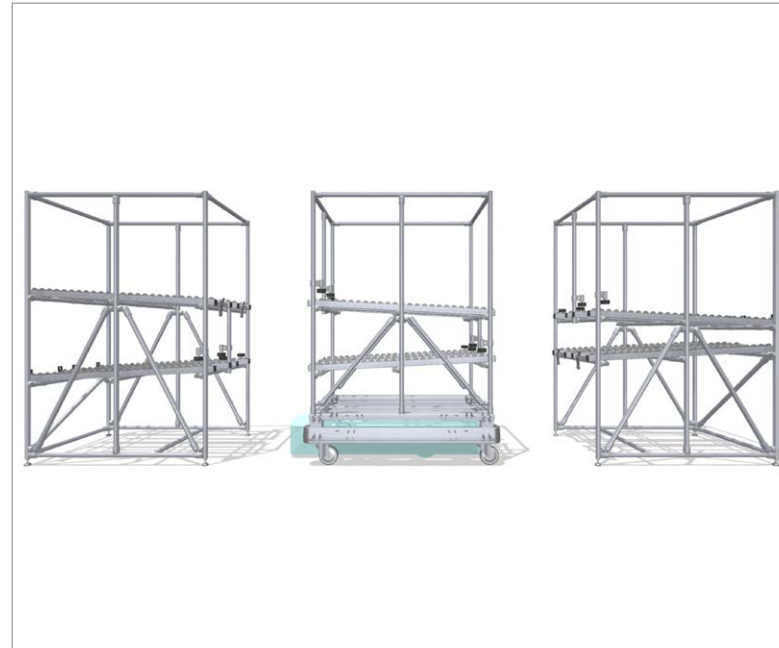
You also get full access to complete CAD data for these constructions. Most sample solutions can be modified directly in the item Engineeringtool and then ordered by adding them to your cart in the item Online Shop.

The library of example applications is growing all the time across all categories. This year alone, we have already added more than 50 new sample solutions.

The search function in the item Online Shop helps you track down constructions for typical applications such as

- Material supply
- Palletising
- Work bench interlinking
- Integrating cobots
- Retrofitting work benches
- FIFO racks

The example solutions in the [item Online Shop](#) can be found in the various application categories and in the overview of all example applications.



Automated material supply and picking with mobile robots and two FIFO racks



Interlinking work benches efficiently with T-shaped conveyor belts



Using the item Installation Column as a digital information point in production



Keeping tools organised in this cabinet with pull-out trays



Working productively at this work bench with high-level cabinets and drawer units



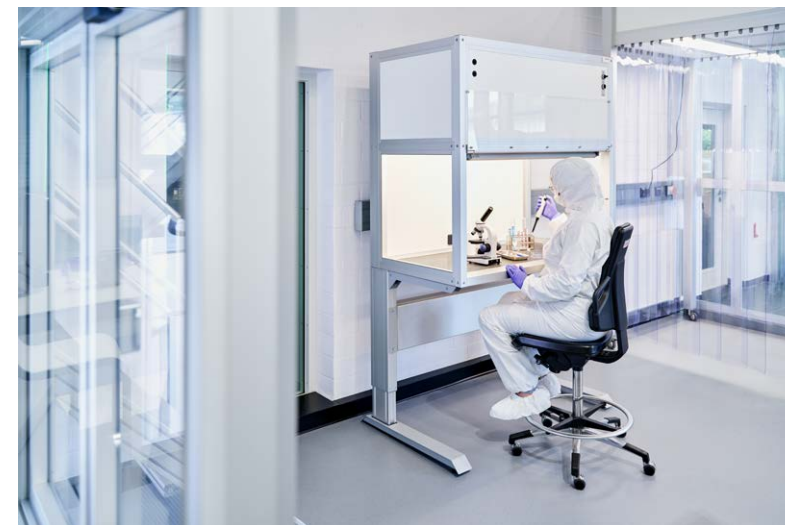
Making production flexible at this robot workstation with an extendible working surface

A cleanroom ready to explore

From a walk-in cleanroom to a machine cabin with a live air current visualisation, the item cleanroom center showcases modular solutions for clean production in action. Visit us to discover all the opportunities available to your company.

The item cleanroom center provides a hands-on experience of the benefits the item Building Kit System offers for clean production. Use our specialised components and huge product portfolio to design customised, flexible and reliable cleanroom applications.

Unlike a real cleanroom, you can get your hands on everything here, try things out and have a good look behind the scenes. Discover, compare and explore a whole range of solutions for clean production – first hand.



item

item Industrietechnik GmbH
Friedenstrasse 107– 109
42699 Solingen
Germany
+49 212 6580 0
info@item24.com
item24.com

item. Your ideas are worth it.®

About the publisher

item Industrietechnik GmbH is a midsize company dedicated to the development and worldwide sale of high-quality components used to build fixtures, machinery and plants as well as system solutions for lean production operations and work bench design. The item Building Kit System is based on aluminium construction profiles and fasteners that are tailored to a whole range of application scenarios in terms of their function and design. A wide portfolio of accessories enables users to create an almost unlimited range of applications – from simple frames and machine enclosures right through to complex handling systems and custom machines.

© item Industrietechnik GmbH 2025